

Murray and Sunraysia – Algae Alert Status

05 June 2026

This Blue-green algal (BGA) alert report is based on routine monitoring at sites in the Murray & Sunraysia Algae Reporting Area. The sites are monitored by WaterNSW and local water authorities. Satellite imagery may be used to supplement the monitoring data.

Please see Table 1 for all red, amber and green alerts.

Red Alerts

- Lake Menindee Site 19
- Lake Menindee at Sunset Strip
- Lake Menindee Outlet Regulator
- Darling River upstream of Weir 32
- Darling River at Tolarno
- Darling River at Pooncarie
- Darling River at Burtundy

Amber Alerts

- Lake Hume at Ebden
- Lake Hume at Heywoods Bay near Bethanga
- Lake Hume Dam Resort
- Lake Hume Dam Wall
- Murray River at Union Bridge in Albury
- Murray River at Corowa
- Murray River at Euston
- Murray River at Fort Courage
- Darling River at Wilcannia
- Lake Wetherell Sites 1, 2, 3 & 4
- Lake Tandure Site 8
- Lake Pamamaroo Inlet
- Lake Pamamaroo Outlet
- Lake Copi Hollow
- Lake Cawndilla Outlet
- Darling River Menindee BHWB Pump
- Darling River at Ellerslie
- Darling River at Tapio

Climate Outlooks

For June to August, rainfall is likely to be below average across the Murray and Sunraysia regions. Maximum and minimum temperatures are very likely to exceed the average (> 80% chance). (Source: [Bureau of Meteorology \(BoM\)](#))

Algal Outlook

The risk of blue-green algal growth is decreasing across the regions, with cooler ambient temperatures and shorter daylight hours creating less favourable conditions for growth. Higher risk remains where flow conditions are low and waters are shallow, particularly within the Menindee Lakes system.

Satellite image observations start on page 4 of this report.

Table 1: Combined Murray and Sunraysia Alerts.

Site	Description	Latest Sample Date	Cyanobacteria Total Count (cells/mL)	Cyanobacteria Biovolume (mm ³ /L)	Potentially Toxic Cyanobacterial Count (cells/mL)	Potentially Toxic Cyanobacterial Biovolume (mm ³ /L)	Current Status (based on Latest Sample)	Previous Status	Cyanobacteria dominant potentially toxic taxa	Cyanobacteria Comments
MURRAY RIVER SYSTEM										
	Corryong Supply - Raw Water Inlet to Corryong TP (NE Water)	1/06/2026	122,198	0.733	200	0.015	AMBER	GREEN	<i>Microcystis sp</i>	
DLH003	Lake Hume, Ebdon	11/05/2026	11,572	0.297	10,415	0.296	AMBER	AMBER	<i>Microcystis sp.</i>	Potentially toxic, taste & odour
DLH001	Lake Hume, Heywoods Bay nr Bethanga	11/05/2026	63,632	1.940	62,339	1.938	AMBER	AMBER	<i>Microcystis sp.</i>	Potentially toxic, taste & odour
DLH002	Lake Hume, Hume Dam Resort	11/05/2026	10,138	0.230	7,076	0.226	AMBER	AMBER	<i>Microcystis sp.</i>	Potentially toxic, taste & odour
DLH004	Lake Hume, Dam Wall	11/05/2026	7,121	0.227	7,121	0.227	AMBER	AMBER	<i>Microcystis sp.</i>	Potentially toxic, taste & odour
N1000	Murray R. Union Bridge Albury	4/05/2026	15,743	0.532	9,041	0.467	AMBER	AMBER	<i>Microcystis sp.</i>	Potentially toxic, taste & odour
N1001	Murray R. Corowa	4/05/2026	19,095	0.486	6,610	0.266	AMBER	AMBER	<i>Microcystis sp.</i>	Potentially toxic, taste & odour
	Yarrowonga Weir (outlet) GMW	5/05/2026	6,503	0.230	1056	0.078	GREEN	AMBER	<i>Microcystis</i>	
N1008	Mulwala Canal Offtake	4/05/2026	19,502	0.103	2,500	0.068	GREEN	AMBER	<i>Microcystis sp.</i>	Potentially toxic, taste & odour
N1007	Murray R. @ below Yarrowonga	4/05/2026	8,213	0.248	2,838	0.197	GREEN	AMBER	<i>Microcystis sp.</i>	Potentially toxic, taste & odour
N1051	Murray R. Cobram (Barooga)	4/05/2026	8,488	0.134	4,259	0.111	GREEN	AMBER	<i>Microcystis sp.</i>	Potentially toxic, taste & odour
	Cobram WTP, raw water (GVW)	26/05/2026	15,843	0.623	6043	0.447	AMBER	GREEN	<i>Microcystis sp</i>	
N1013	Murray R. Tocumwal	4/05/2026	18,902	0.086	2,327	0.056	GREEN	AMBER	<i>Microcystis sp.</i>	Potentially toxic, taste & odour
N1052	Murray R. Picnic Point	4/05/2026	7,976	0.133	1,633	0.039	GREEN	AMBER	<i>Microcystis sp.</i>	Potentially toxic, taste & odour
	Barmah WTP raw water (GVW)	25/05/2026	15,094	0.718	5962	0.436	AMBER	GREEN	<i>Microcystis sp</i>	
N1050	Murray R. Moama (Echuca)	4/05/2026	20,603	0.054	850	0.020	GREEN	AMBER	<i>Microcystis sp.</i>	Potentially toxic, taste & odour
	Torrumbarry Weir GMW	1/06/2026	3,764	0.181	1654.000	0.133	GREEN	GREEN	<i>Microcystis</i>	
N1003	Murray R. Barham (Koondrook)	5/05/2026	12,126	0.025	476	0.011	No Alert	GREEN	<i>Microcystis sp.</i>	Potentially toxic, taste & odour
N1054	Murray R. Murray Downs (Swan Hill)	5/05/2026	10,046	0.254	136	0.003	GREEN	GREEN	<i>Microcystis sp.</i>	Potentially toxic, taste & odour
	Murray River U/S Woorinen pumps GMW	4/05/2026	64,740	0.300	0	0.000	GREEN	AMBER		
N1055	Murray R. Tooleybuc (Piangil)	5/05/2026	43,650	0.098	1,701	0.046	GREEN	GREEN	<i>Oscillatoriaceae/Microcoleaceae sp.</i>	Potentially toxic, taste & odour
N1064	Lake Benanee Rec Area	27/05/2026	33,782	0.044	0	0.000	GREEN	AMBER		
N1028	Murray R. Euston (Robinvale)	26/05/2026	46,836	0.718	205	0.004	AMBER	GREEN	<i>Microcystis sp.</i>	Potentially toxic, taste & odour
N1065	Murray R. Mount Dispersion	28/04/2026	55,560	0.083	204	0.004	GREEN	GREEN	<i>Microcystis sp.</i>	Potentially toxic, taste & odour
N1062	Murray R. Buronga	4/05/2026	79,917	0.187	2,994	0.092	GREEN	GREEN	<i>Radiocystis sp.</i>	Potentially toxic
	Merbein (LMW)	11/05/2026	57,938	0.920	136	0.010	GREEN	GREEN	<i>Microcystis</i>	
N1027	414206 - Murray River at Merbein	4/05/2026	62,773	0.071	0	0.000	GREEN	GREEN		
N1063	Murray R. Curlwaa	4/05/2026	93,618	0.088	0	0.000	GREEN	GREEN		
N1066	Murray R. Fort Courage	4/05/2026	391,022	0.517	0	0.000	AMBER	GREEN		
	Lock 9 (LMW)	11/05/2026	97,058	0.702	282	0.062	GREEN	GREEN	<i>Dolichospermum - coiled (=6µm)</i>	
N1077	Murray R. Lock 8	4/05/2026	134,785	0.184	272	0.034	GREEN	AMBER	<i>Anabaenopsis sp.</i>	Potentially toxic
N1078	Lake Victoria Outlet Regulator	4/05/2026	680	0.003	0	0.000	No Alert	No Alert		

Table 1: Continued

Site	Description	Latest Sample Date	Cyanobacteria Total Count (cells/mL)	Cyanobacteria Biovolume (mm ³ /L)	Potentially Toxic Cyanobacterial Count (cells/mL)	Potentially Toxic Cyanobacterial Biovolume (mm ³ /L)	Current Status (based on Latest Sample)	Previous Status	Cyanobacteria dominant potentially toxic taxa	Cyanobacteria Comments
BILLBONG CREEK, EDWARD & WAKOOL RIVERS										
N1020	Billabong Ck. Walbundrie	4/05/2026	2,926	0.033	1,293	0.031	No Alert	No Alert	<i>Microcystis sp.</i>	Potentially toxic, taste & odour
N1015	Billabong Ck. Jerilderie	4/05/2026	0	0.000	0	0.000	No Alert	No Alert		
N1006	Gulpa Ck. Mathoura	4/05/2026	8,423	0.078	952	0.029	GREEN	AMBER	<i>Microcystis sp.</i>	Potentially toxic, taste & odour
N1002	Edward R Deniliquin	4/05/2026	19,923	0.048	204	0.004	GREEN	AMBER	<i>Microcystis sp.</i>	Potentially toxic, taste & odour
N1053	Edward R. Old Morago	5/05/2026	24,891	0.069	136	0.003	GREEN	GREEN	<i>Microcystis sp.</i>	Potentially toxic, taste & odour
N1005	Edward R. Moulamein	5/05/2026	20,848	0.062	1,565	0.037	GREEN	GREEN	<i>Microcystis sp.</i>	Potentially toxic, taste & odour
N1010	Wakool R. Wakool-Barham Road	5/05/2026	69,589	0.096	0	0.000	GREEN	GREEN		
N1004	Wakool R. @ Stoney Crossing	5/05/2026	17,080	0.017	0	0.000	No Alert	No Alert		
N1009	Wakool R. Kyalite	5/05/2026	41,378	0.054	0	0.000	GREEN	GREEN		
MENINDEE LAKE SYSTEM & LOWER DARLING RIVER										
N1042	Darling River at Wilcannia	6/05/2026	149,579	0.194	306	0.039	AMBER	AMBER	<i>Anabaenopsis sp.</i>	Potentially toxic
N1087	Lake Wetherell Site 1	25/05/2026	761,482	1.146	0	0.000	AMBER	AMBER		
N1088	Lake Wetherell Site 2	25/05/2026	228,609	0.340	0	0.000	AMBER	AMBER		
N1089	Lake Wetherell Site 3	25/05/2026	623,217	4.684	344	0.044	AMBER	AMBER	<i>Anabaenopsis sp.</i>	Potentially toxic
N1090	Lake Wetherell Site 4	25/05/2026	1,005,800	5.163	653	0.075	AMBER	AMBER	<i>Anabaenopsis sp.</i>	Potentially toxic
N1091	Lake Tandure Site 8	25/05/2026	619,113	1.518	0	0.000	AMBER	AMBER		
N1092	Lake Pamamaroo Inlet (Site 9)	18/05/2026	455,105	1.826	289	0.037	AMBER	AMBER	<i>Anabaenopsis sp.</i>	Potentially toxic
N1093	Lake Pamamaroo Outlet (Site 10)	25/05/2026	361,222	0.609	0	0.000	AMBER	AMBER		
N1094	Menindee Lakes, Copi Hollow	21/04/2026	273,158	0.466	306	0.036	AMBER	AMBER	<i>Dolichospermum coiled species</i>	Potentially toxic, taste & odour
N1337	Lake Menindee at Sunset Strip	25/05/2026	16,254,913	30.819	959	0.019	RED	RED	<i>Oscillatoriaceae/Microcoleaceae sp.</i>	Potentially toxic, taste & odour
N1130	Lake Menindee Site 19						RED	RED		Site currently inaccessible for sampling.
N1339	Lake Menindee outlet regulator	26/05/2026	17,047,239	30.737	0	0.000	RED	RED		
N1128	Lake Cawndilla Site 34 Outlet	18/05/2026	3,003,890	6.024	3,103	0.209	AMBER	RED	<i>Raphidiopsis raciborskii</i>	Potentially toxic, taste & odour
N1095	Darling R. Menindee bhwb pump	26/05/2026	917,721	2.222	103	0.013	AMBER	AMBER	<i>Anabaenopsis sp.</i>	Potentially toxic
N1086	Darling R u/s Weir 32	26/05/2026	16,272,527	18.731	0	0.000	RED	RED		
N1043	Darling R. Tolarno	25/05/2026	6,305,686	8.276	0	0.000	RED	RED		
N1040	Darling R. Pooncarie	25/05/2026	5,629,656	7.427	0	0.000	RED	RED		
N1041	Darling R. Burtundy	25/05/2026	15,080,494	17.255	0	0.000	RED	RED		
N1074	Darling R. Ellerslie	25/05/2026	4,156,838	5.767	91	0.002	AMBER	RED	<i>Oscillatoriaceae/Microcoleaceae sp.</i>	Potentially toxic, taste & odour
N1075	Darling R. Tapio	2/06/2026	1,626,181	1.906	0	0.000	AMBER	AMBER		

Satellite imagery

The key to the approximate total algae (blue green and non-blue green) concentrations using the Custom Algae Script can be found in Table 3. The actual values can potentially vary by a significant margin due to the geology of the waterbody, species of algae, turbidity, aquatic plants, time of day of the image capture, aerosols in the atmosphere, etc. This variability is a result of the nature of satellite imagery being a large-scale remote sensing format and is not function of the technology or the script itself. For this reason, these colours and descriptors are not the official “**Algae Alert Level**” but rather provides information on the **potential risk on algae formation**.

Table 3: Observed risk levels based on the estimated photosynthetic activity for Custom Algae Script

Map Colour	Risk Level -	Starting concentration guide range	RACC recreational alert values approx. equivalence
Blue	Very low	<0.05 mm ³ /L	No Alert
Green	Low	0.05 to 0.5 mm ³ /L	Green
Yellow	Medium	0.5 to 5.0 mm ³ /L	Amber
Red	High	5.0 to 20.0 mm ³ /L	Red
Dark red	Extreme	> 20 mm ³ /L	Red

Observations about the satellite images

Hume Dam (Figure 1): Cloud cover has blocked recent images. The satellite image from the 21st of May indicates mostly very low phytoplankton activity across the lake, with some increased activity remaining near Bowna.

Menindee Lake System (Figure 2) - The satellite image from the 22nd of May, showed mostly low to moderate levels of phytoplankton activity across Lake Menindee, Cawndilla Creek, Lake Cawndilla and Weir 32. Lake Wetherell’s sites 3 and 4 indicated mostly moderate to high levels of activity. Mostly very low levels were indicated at Lakes Tandure, Pamamaroo and Copi Hollow and Lake Wetherell sites 1 and 2. Some increased activity is indicated in the southwest of Lake Tandure near the Darling River inflow.

Murray River at Wentworth (Figure 3) - The satellite image from the 22nd of May indicated very low levels of phytoplankton activity in the Murray, while the Darling River showed mostly low to moderate levels of activity. The Great Darling Anabranch displayed mostly moderate levels of phytoplankton activity.

Lake Victoria (Figure 4) - On the 30th of May, mostly very low phytoplankton activity was observed across the lake.



Figure 1: Hume Dam 21/05/2026 SentinelHub [CC BY-NC 4.0] NSW- RACC Custom Algae Script - TF, WaterNSW.

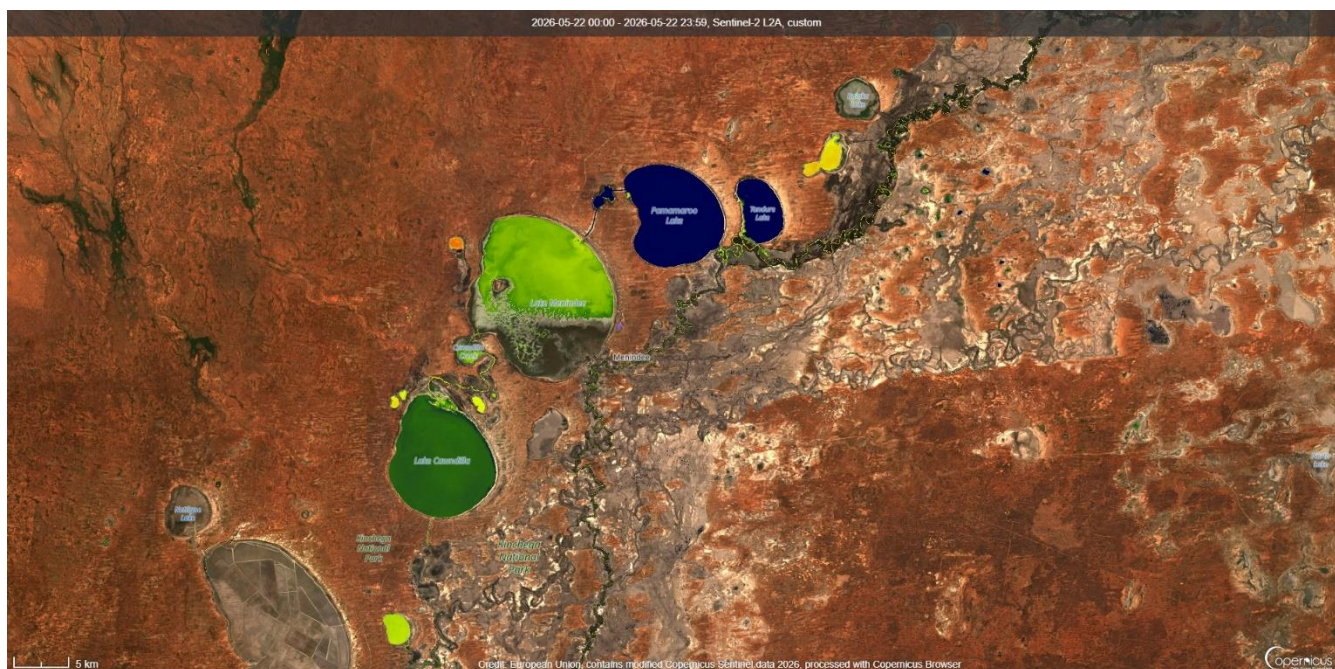


Figure 2: Menindee Lakes 22/05/2026 SentinelHub [CC BY-NC 4.0] NSW-RACC Custom Algae Script - TF, WaterNSW.

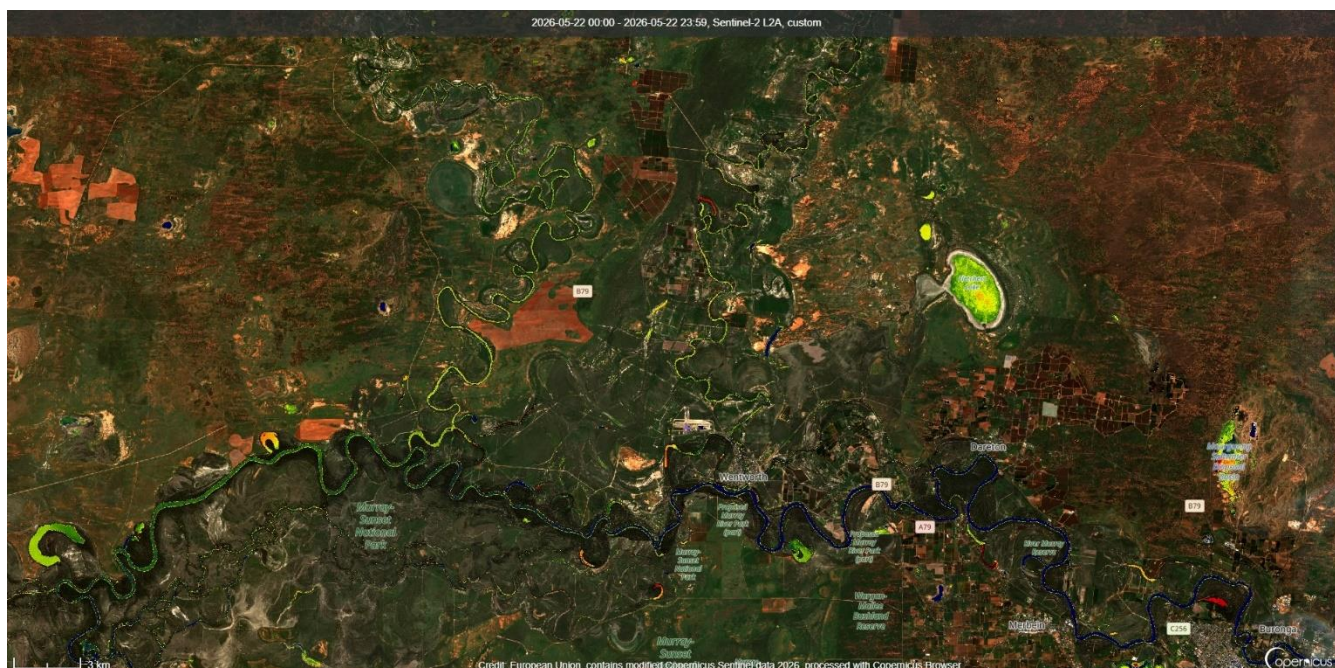


Figure 3: Murray River near Wentworth, Lower Darling River and Great Darling Anabranch 22/05/2026 SentinelHub [CC BY-NC 4.0] NSW- RACC Custom Algae Script - TF, WaterNSW.



Figure 4: Lake Victoria 30/05/2026 SentinelHub [CC BY-NC 4.0] NSW- RACC Custom Algae Script - TF, WaterNSW.

Alert Definitions for Recreational Waters

Alert Definitions as specified in The National Health and Medical Research Council (NHMRC) *Guidelines for Managing Risks in Recreational Water* 2008.

The interim use of these guidelines is endorsed by the Scientific Subcommittee of the NSW Algal Advisory Group.

RED ALERT

These alert levels represent 'bloom' conditions. Water will appear green or discoloured and clumps or scums could be visible. It can also give off a strong musty or organic odour.

Algae may be toxic to humans and animals. Contact with or use of water from red alert areas should be avoided due to the risk of eye and skin irritation. Drinking untreated or boiled water from these supplies can cause stomach upsets. Alternative water supplies should be sought or activated carbon treatment employed to remove toxins. People should not fish when an algal scum is present. Owners should keep dogs away from high alert areas and provide alternative watering points for stock.

AMBER ALERT

Blue-green algae may be multiplying, and the water may have a green tinge and musty or organic taste and odour. The water should be considered as unsuitable for potable use and alternative supplies or prior treatment of raw water for domestic purposes should be considered. The water may also be unsuitable for stock watering. Generally suitable for water sports, however people are advised to exercise caution in these areas, as blue-green algal concentrations can rise to red alert levels quickly under warm, calm weather conditions.

GREEN ALERT

Blue-green algae occur naturally at low numbers. At these concentrations, algae would not normally be visible, however some species may affect taste and odour of water even at low numbers and does not pose any problems for recreational, stock or household use.

Key to Alerts for Recreational Waters

<p>RED Alert $\geq 50\ 000$ cells/mL toxic <i>M. aeruginosa</i> OR biovolume equivalent of ≥ 4 mm³/L for the combined total of all cyanobacteria where a known toxin producer is dominant in the total biovolume OR The total biovolume of all cyanobacteria ≥ 10 mm³/L OR Cyanobacterial scums are consistently present</p>	<ul style="list-style-type: none"> • High levels of Blue Green Algae detected • Indicates “bloom” conditions • Toxicity should be presumed • Water will appear green or brownish and may have a strong musty taste and odour • Surface scums could occur • Extreme care should be exercised, and contact with the water should be avoided <p>Action</p> <ul style="list-style-type: none"> • Issue Media Release • Water supply authorities to increase filtering with activated carbon as appropriate • Local authority and health authorities to warn the public that the water body is unsuitable for primary contact recreation
<p>AMBER Alert $\geq 5\ 000$ to $< 50\ 000$ cells/mL <i>M. aeruginosa</i> OR biovolume equivalent of ≥ 0.4 to < 4 mm³/L for the combined total of all cyanobacteria where known toxin producers are dominant in the total biovolume OR ≥ 0.4 to < 10mm³/L combined total for all blue-green algae where known toxin producers are not dominant</p>	<ul style="list-style-type: none"> • Indicates blue-green algae are multiplying • Water may have a green tinge and musty taste and odour <p>Action</p> <ul style="list-style-type: none"> • Water supply authorities to consider filtering with activated carbon • Investigations into the causes of the elevated levels and increased sampling to enable the risks to recreational users to be more accurately assessed.
<p>GREEN Alert > 500 to $< 5\ 000$ cells/mL <i>M. aeruginosa</i> OR biovolume equivalent of > 0.04 to < 0.4 mm³/L for the combined total of all cyanobacteria</p>	<ul style="list-style-type: none"> • Low levels of potentially toxic species detected – suggesting base crop of blue green algae may be on the increase <p>Action</p> <ul style="list-style-type: none"> • Continue/increase routine sampling to measure cyanobacterial levels

Livestock Drinking Water Guidelines Based on ARMCANZ (2000), Orr and Schneider (2006) and WQRA (2010)

This guideline should be used when water is used for livestock drinking water purposes.

- If visual scums are present, then a High alert should be declared. This would be applicable for both farm dams and publicly managed water bodies (streams, rivers, etc). Such advice should also be given to farmers who phone the department seeking information on managing blooms in their dams.
- Where blooms dominated by *Microcystis aeruginosa* are present, then the ANZECC/ARMCANZ (2000) guideline of 11,500 cells/mL should be used. Excess of this cell count will constitute a **High alert**.
- Where blooms dominated by *Dolichospermum circinale* are present, then the Orr and Schneider (2006) guideline of 25,000 cells/mL should be used. Excess of this cell count will constitute a **High alert**.
- **Blooms of blue-green algae other than *M. aeruginosa* and *D. circinale*** are also common in NSW. These can be of either known potentially toxic species, or of species not considered to be toxin producers. When these blooms are present, a total blue-green algal biovolume in excess of 6 mm³/L will constitute a **High alert**. (These are based on Very High alert recommendations for raw water sourced for potable human supply published by WQRA (2010), in lieu of there being nothing else available).

Further Information and Contacts

Links to websites of VIC and other agencies

[Link to Snowy Valleys Council](#)

[Link to North East Water](#)

[Link to Goulburn-Murray Water blue-green algal alerts](#)

[Link to Goulburn Valley Water blue-green algal information](#)

[Link to Lower Murray Water blue-green algal alerts](#)

[NSW DPI blue-green-algae information for landholders](#)

Manus Lake, at the Pontoon – [Snowy Valley Council](#)

Go to the WaterNSW Algal Website

www.waternsw.com.au/algae or at WaterInsights (links below):

Murray regulated river – <https://waterinsights.waternsw.com.au/11904-new-south-wales-murray-regulated-river/updates>

Lower-Darling regulated river – <https://waterinsights.waternsw.com.au/12104-lower-darling-regulated-river/updates>

Contacts

Asha Kelly (Coordinator)

Asha.Kelly@waternsw.com.au

Mobile: 0476 381 537