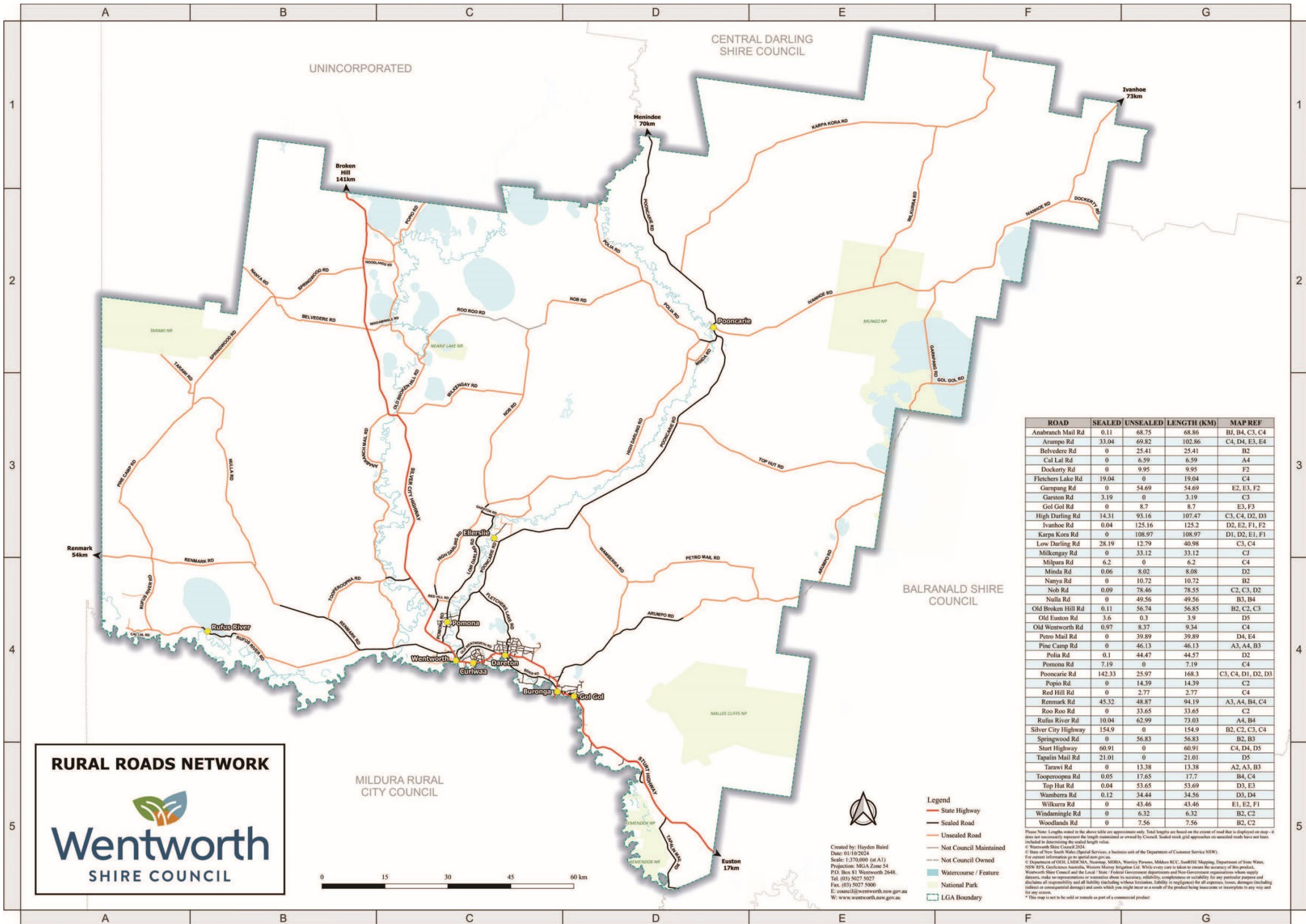


WENTWORTH SHIRE COUNCIL'S CURRENT ROAD CONDITION REPORT AS OF
MONDAY, 04 August 2025 4:00pm
WILL BE RELEASED WHEN CONDITIONS CHANGE.

ROAD NAME	STATUS	COMMENTS
ANABRANCH MAIL ROAD	CAUTION	WATER OVER ROAD
ARUMPO ROAD	CAUTION	WATER OVER ROAD
BELVEDERE ROAD	CAUTION	WATER OVER ROAD
CAL LAL ROAD	CAUTION	WATER OVER ROAD
DOCKERTY ROAD	CAUTION	WATER OVER ROAD
GARNPANG ROAD	CAUTION	WATER OVER ROAD
GOL GOL ROAD	CAUTION	WATER OVER ROAD
HIGH DARLING ROAD (from end of bitumen)	CAUTION	WATER OVER ROAD
IVANHOE ROAD	CAUTION	WATER OVER ROAD
KARPA KORA ROAD	CAUTION	WATER OVER ROAD
LOW DARLING ROAD (from end of bitumen)	CAUTION	WATER OVER ROAD
MILKENGAY ROAD	CAUTION	WATER OVER ROAD
MINDA ROAD	CAUTION	WATER OVER ROAD
NANYA ROAD	CAUTION	WATER OVER ROAD
NOB ROAD	CAUTION	WATER OVER ROAD
NULLA ROAD	CAUTION	WATER OVER ROAD
OLD BROKEN HILL ROAD	CLOSED	Due to roadworks
PETRO MAIL ROAD	CAUTION	WATER OVER ROAD
PINE CAMP ROAD	CAUTION	WATER OVER ROAD
POLIA ROAD (from HIGH DARLING RD to NOB RD)	CAUTION	WATER OVER ROAD
POLIA ROAD (from NOB RD to SHIRE BOUNDARY)	CAUTION	WATER OVER ROAD
POPIO ROAD	CAUTION	WATER OVER ROAD
RED HILL ROAD	CAUTION	WATER OVER ROAD
REMARK ROAD (from end of bitumen)	CAUTION	WATER OVER ROAD
ROO ROO ROAD	CLOSED	Due to roadworks
RUFUS ROAD	CAUTION	WATER OVER ROAD
SPRINGWOOD ROAD	CAUTION	WATER OVER ROAD
TARAWI ROAD	CAUTION	WATER OVER ROAD
TOOPEROOPNA ROAD	CAUTION	WATER OVER ROAD
TOP HUT ROAD	CAUTION	WATER OVER ROAD
WAMBERRA ROAD	CLOSED	Due to roadworks
WILKURRA ROAD	CAUTION	WATER OVER ROAD
WINDAMINGLE ROAD	CAUTION	WATER OVER ROAD

More frequent reviews may occur during periods of severe weather.

ANY PERSON DRIVING ON CLOSED ROADS WILL BE SUBJECT TO FINES AND MAY BE CHARGED FOR ANY WORKS NECESSARY TO RECTIFY THE DAMAGE.



RURAL ROADS NETWORK



0 15 30 45 60 km



- Legend**
- State Highway
 - Sealed Road
 - Unsealed Road
 - Not Council Maintained
 - Not Council Owned
 - Watercourse / Feature
 - National Park
 - LGA Boundary

ROAD	SEALED	UNSEALED	LENGTH (KM)	MAP REF
Anabranch Mail Rd	0.11	68.75	68.86	BJ, B4, C3, C4
Arumpo Rd	33.04	69.82	102.86	C4, D4, E3, E4
Belvedere Rd	0	25.41	25.41	B2
Cal Lai Rd	0	6.59	6.59	A4
Dockery Rd	0	9.95	9.95	F2
Fletchers Lake Rd	19.04	0	19.04	C4
Garmpang Rd	0	54.69	54.69	E2, E3, F2
Garston Rd	3.19	0	3.19	C3
Gol Gol Rd	0	8.7	8.7	E3, F3
High Darling Rd	14.31	93.16	107.47	C3, C4, D2, D3
Ivanhoe Rd	0.04	125.16	125.2	D2, E2, F1, F2
Karpa Kor Rd	0	108.97	108.97	D1, D2, E1, F1
Low Darling Rd	28.19	12.79	40.98	C3, C4
Milkengay Rd	0	33.12	33.12	C1
Milpara Rd	6.2	0	6.2	C4
Minda Rd	0.06	8.02	8.08	D2
Nanya Rd	0	10.72	10.72	B2
Nob Rd	0.09	78.46	78.55	C2, C3, D2
Nulla Rd	0	49.56	49.56	B3, B4
Old Broken Hill Rd	0.11	56.74	56.85	B2, C2, C3
Old Euston Rd	3.6	0.3	3.9	D5
Old Wentworth Rd	0.97	8.37	9.34	C4
Petro Mail Rd	0	39.89	39.89	D4, E4
Pine Camp Rd	0	46.13	46.13	A3, A4, B3
Polia Rd	0.1	44.47	44.57	D2
Pomona Rd	7.19	0	7.19	C4
Pooncarie Rd	142.33	25.97	168.3	C3, C4, D1, D2, D3
Popio Rd	0	14.39	14.39	C2
Red Hill Rd	0	2.77	2.77	C4
Renmark Rd	45.32	48.87	94.19	A3, A4, B4, C4
Roo Rd	0	33.65	33.65	C2
Rufus River Rd	10.04	62.99	73.03	A4, B4
Silver City Highway	154.9	0	154.9	B2, C2, C3, C4
Springwood Rd	0	56.83	56.83	B2, B3
Start Highway	60.91	0	60.91	C4, D4, D5
Tapalin Mail Rd	21.01	0	21.01	D5
Tarawi Rd	0	13.38	13.38	A2, A3, B3
Tooperoopa Rd	0.05	17.65	17.7	B4, C4
Top Hat Rd	0.04	53.65	53.69	D3, E3
Wamberra Rd	0.12	34.44	34.56	D3, D4
Wilkurra Rd	0	43.46	43.46	E1, E2, F1
Windmangle Rd	0	6.32	6.32	B2, C2
Woodlands Rd	0	7.56	7.56	B2, C2

Please Note: Lengths stated in the above table are approximate only. Total lengths are based on the extent of road that is displayed on map - it does not necessarily represent the length maintained or owned by Council. Sealed track grid approaches to unsealed roads have not been included in determining the sealed length value.

© Wentworth Shire Council 2024.

© State of New South Wales (Spatial Services), a business unit of the Department of Customer Service (NSW).

For copyright information go to spatial.nsw.gov.au.

© Department of OHL, LADKMA, Norway, MDRA, Woorley Prouse, Milken RCC, SouthEast Mapping, Department of State Water, NSW RPS, Geosystems Australia, Western Murray Irrigation Ltd. While every care is taken to ensure the accuracy of this product, Wentworth Shire Council and the Local / State / Federal Government departments and Non-Government organisations whom supply datasets, make no representation or warranty about its accuracy, reliability, completeness or suitability for any particular purpose and disclaim all responsibility and all liability (including without limitation, liability or negligence for all expenses, losses, damages including indirect or consequential damages) and costs which you might incur as a result of the product being inaccurate or incomplete in any way and for any reason.

* This map is not to be sold or reprints as part of a commercial product.