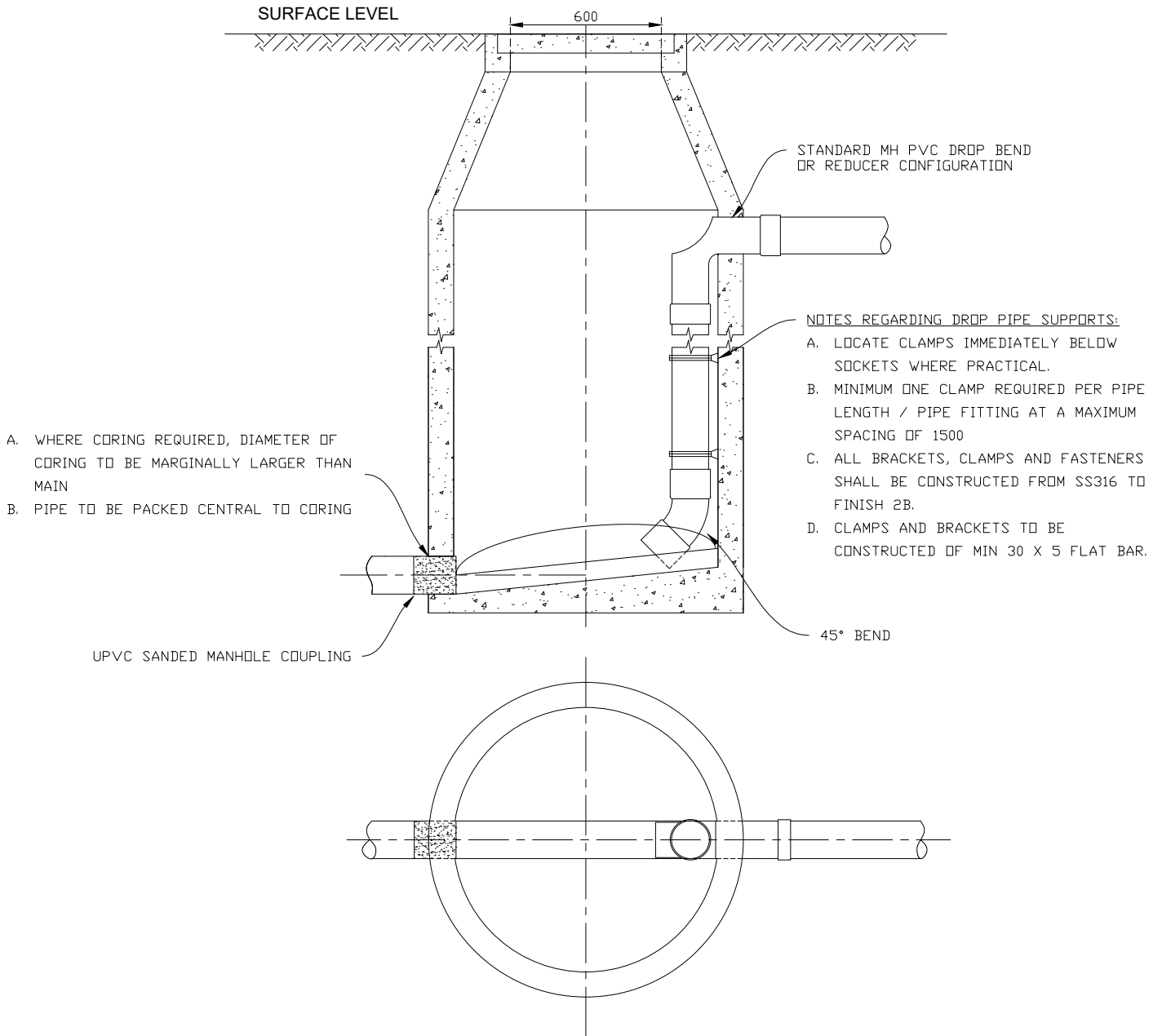


## SECTION A-A



- A. WHERE CORING REQUIRED, DIAMETER OF CORING TO BE MARGINALLY LARGER THAN MAIN
- B. PIPE TO BE PACKED CENTRAL TO CORING

- NOTES REGARDING DROP PIPE SUPPORTS:**
- A. LOCATE CLAMPS IMMEDIATELY BELOW SOCKETS WHERE PRACTICAL.
  - B. MINIMUM ONE CLAMP REQUIRED PER PIPE LENGTH / PIPE FITTING AT A MAXIMUM SPACING OF 1500
  - C. ALL BRACKETS, CLAMPS AND FASTENERS SHALL BE CONSTRUCTED FROM SS316 TO FINISH 2B.
  - D. CLAMPS AND BRACKETS TO BE CONSTRUCTED OF MIN 30 X 5 FLAT BAR.

## PLAN

1. PIPE SPECIFICATIONS AS DIRECTED BY ENGINEER.
2. LOCATION OF DRAINS ARE EXAMPLES ONLY. CHECK PLANS FOR MANHOLE ARRANGEMENT.
3. STEP IRONS TO BE PROVIDED IN ALL PITS GREATER THAN 1.5M. REFER TO SD5-7.
4. NATURESTRIP NON TRAFFICKED AREAS WITHIN PROPERTIES LIGHT WEIGHT LID. NATURESTRIP TRAFFICKED AREAS MEDIUM WEIGHT LID. ROADS WITH HEAVILY TRAFFICKED AREAS HEAVY WEIGHT LID.
5. MIN. MANHOLE DEPTH 1.00M.
6. EXCAVATION DEEPER THAN 1.5M REQUIRES TRENCH SHORING IN ACCORDANCE WITH AUSTRALIAN STANDARDS.
7. BOTTOM OF MANHOLE IS TO BE SHAPED TO SPRINGING LINE OF INLET AND OUTLET PIPES TO ASSIST AND CONTROL FLOW THROUGH MANHOLE.
8. CUTTING IN OF JUNCTION IS PERMITTED WITH APPROVAL OF SHIRE COUNCIL.
9. REFER TO WSA 02-2014 (TABLE 5.12 AND 5.13) FOR GRADE AND VERTICAL DROP REQUIREMENTS.

**WENTWORTH  
SHIRE COUNCIL**

WWW.WENTWORTH.NSW.GOV.AU PH: 03 5027 5027

SEWERAGE MANHOLE

INTERNAL DROP ARRANGEMENT

REV.	DATE	REVISION DESCRIPTION	DRN	APPD
B	17/5/21	DROP PIPE RELOCATED WITHIN MANHOLE	T.S	G.G
A	1/10/04	ORIGINAL ISSUE	WSC	WSC

**GENERAL NOTES:**

1. DRAWING NOT TO BE SCALED.
2. ALL MEASUREMENTS ARE IN MILLIMETERS UNLESS STATED OTHERWISE.
3. FOR UP-TO-DATE DRAWINGS PLEASE CHECK THE WSC WEBSITE.
4. ALL STANDARD DRAWINGS ARE TO BE USED IN CONJUNCTION WITH SD1-1 (STANDARD DRAWINGS CONDITIONS OF USE).

DATE CREATED:  
17 MAY 2021

DRG. NO:

SD 212

REV:  
B