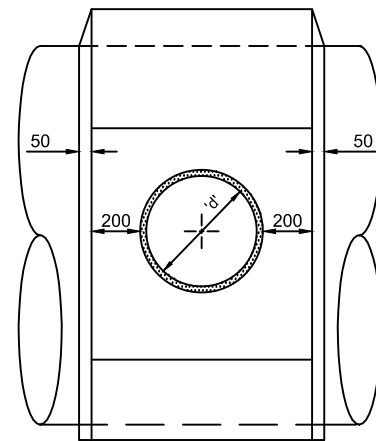
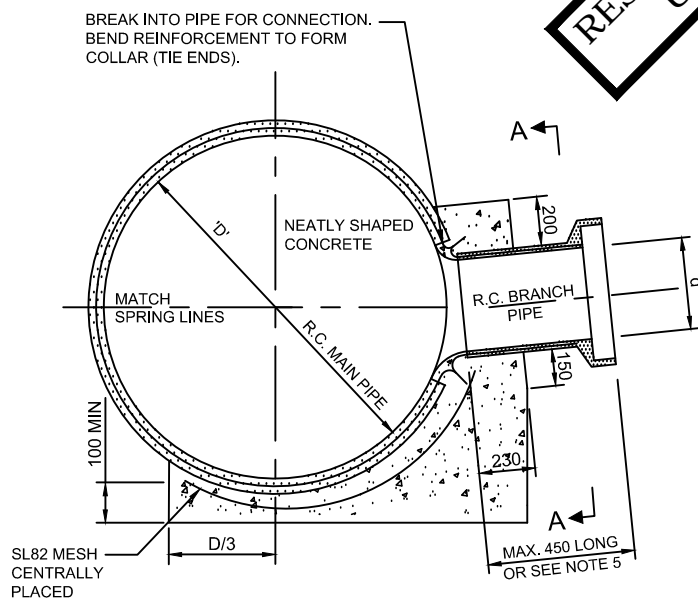


**BRANCH PIPE 450Ø AND LARGER
PROVIDED 'd' IS LESS THAN 'D/3'**

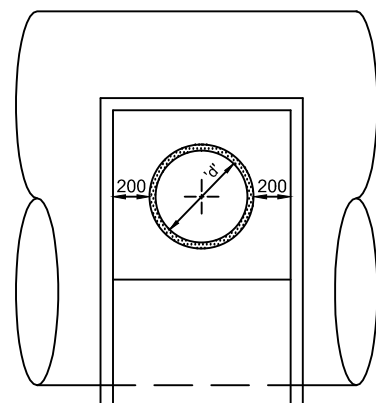


SECTION B - B

NOTE:
WHEN 'd' IS GREATER THAN 'D/3'
A PIT MUST BE CONSTRUCTED



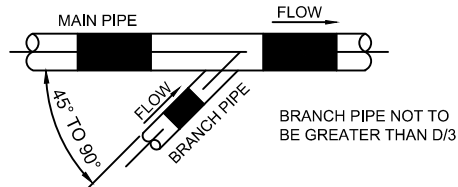
**BRANCH PIPE UP TO 375Ø
PROVIDED 'd' IS LESS THAN 'D/3'
MINIMUM SIZE "D" 1050**



SECTION A - A

NOTES:

1. REINFORCEMENT IN PIPE IS TO BE CUT AND FORMED INTO COLLAR. CARE IS TO BE TAKEN TO PREVENT DAMAGE TO THE PIPE.
2. CONCRETE JOINTING TO BE NEATLY SHAPED AND RENDERED ON THE INSIDE OF THE DRAIN.
3. R.C.P. CONNECTION TO BE ANGLED DOWNSTREAM UNLESS SPECIAL APPROVAL IS GIVEN.
4. WHERE CONNECTION CANNOT BE RENDERED FROM INSIDE OF PIPE, CONNECTION TO CONSIST OF 300mm LENGTH BRANCH TO ALLOW RENDERING FROM OUTSIDE.
5. PIPE CONNECTIONS ONLY USED IN SPECIAL CIRCUMSTANCES. COUNCIL APPROVAL REQUIRED.
6. MINIMUM CONCRETE STRENGTH OF 25MPa AT 28 DAYS.



PREFERENCE TO BE GIVEN TO
ANGLING CONNECTION DOWN STREAM.

**WENTWORTH
SHIRE COUNCIL**
WORTH THE DRIVE

STANDARD DRAWINGS

**PIPE CONNECTIONS
TO PIPELINES**

REV.	DATE	REVISION DESCRIPTION	DRN.	APPD.
A	28/10/15	ORIGINAL ISSUE	S.W.	S.P.

GENERAL NOTES:

1. DRAWING NOT TO BE SCALED.
2. ALL MEASUREMENTS ARE IN MILLIMETRES UNLESS STATED OTHERWISE.
3. FOR UP-TO-DATE DRAWINGS PLEASE CONTACT WENTWORTH SHIRE COUNCIL (WSC) OR CHECK THE WSC WEBSITE.
4. ALL STANDARD DRAWINGS ARE TO BE USED IN CONJUNCTION WITH SD1-1 (STANDARD DRAWINGS CONDITIONS OF USE).

DATE CREATED:
28/10/15

DRG. NO:

SD6-8

REV:
A