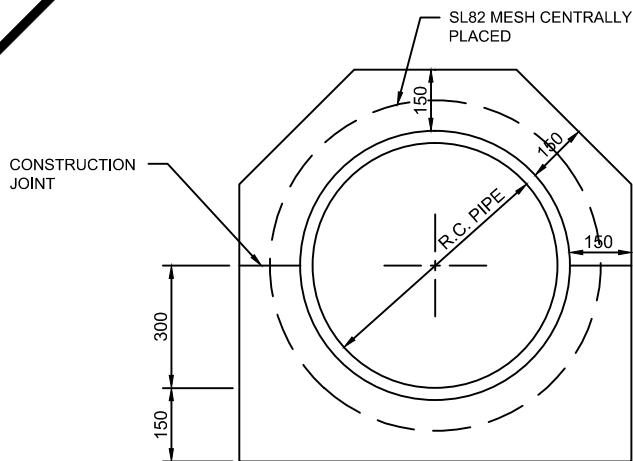
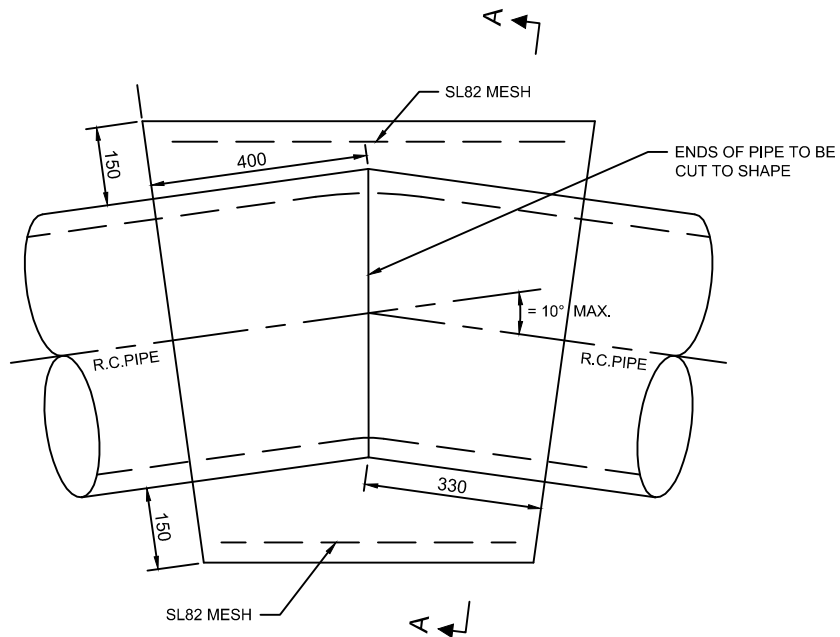


**RESTRICTED
USE**



SECTION A - A



PLAN

NOTES:

1. CONCRETE IS NOT TO PROTRUDE INTO WATERWAY.
2. ALL REINFORCEMENT TO HAVE MINIMUM OF 50mm COVER.
3. MINIMUM CONCRETE STRENGTH OF 25MPa AT 28 DAYS.
4. WENTWORTH SHIRE COUNCIL APPROVAL MUST BE OBTAINED TO CONSTRUCT BANDAGE JOINTS.

Drawing name: E:\my documents\work\03\WC\standards development\standard drawings\SD6-7 RESTRICTED REV A.dwg (04 Nov, 2015)

A	28/10/15	ORIGINAL ISSUE		S.W.	S.P.
REV.	DATE	REVISION DESCRIPTION		DRN.	APPD.

GENERAL NOTES:

1. DRAWING NOT TO BE SCALED.
2. ALL MEASUREMENTS ARE IN MILLIMETRES UNLESS STATED OTHERWISE.
3. FOR UP-TO-DATE DRAWINGS PLEASE CONTACT WENTWORTH SHIRE COUNCIL (WSC) OR CHECK THE WSC WEBSITE.
4. ALL STANDARD DRAWINGS ARE TO BE USED IN CONJUNCTION WITH SD1-1 (STANDARD DRAWINGS CONDITIONS OF USE).

**WENTWORTH
SHIRE COUNCIL**
WORTH THE DRIVE

STANDARD DRAWINGS

BANDAGE JOINT

DATE CREATED:
28/10/15

DRG. NO:

SD6-7

REV:

A