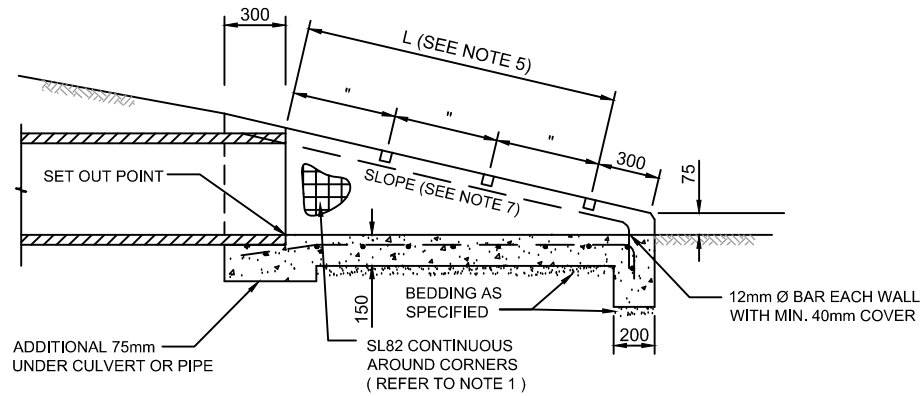
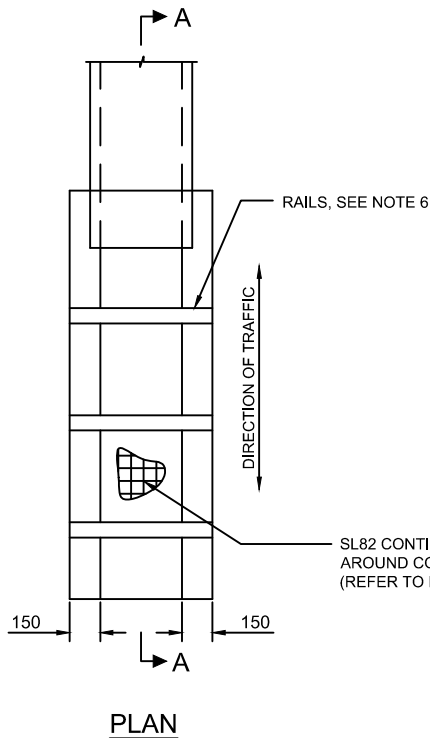


Drawing name: E:\my documents\work\0jobs\3\WC\standards development\standard drawings\SD6-14 REV A.dwg (04 Nov, 2015)

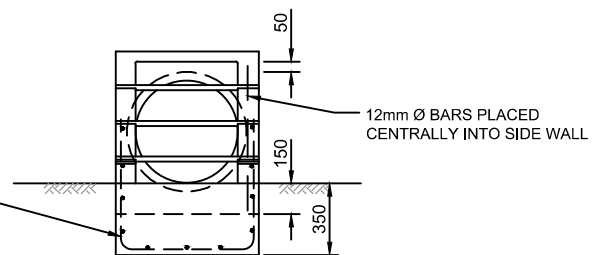


SECTION A-A



PLAN

L (mm)	TOTAL NUMBER OF RAILS
100 - 600	1
601 - 1200	2
1201 - 1800	3
1801 - 2400	4



END ELEVATION

NOTES:

1. REINFORCEMENT, SL82 UNLESS OTHERWISE SPECIFIED, TO BE CONTINUOUS AROUND CORNERS AND LOCATED AS SHOWN. CLEAR COVER 50mm MIN. LAPS: FABRICS 300mm MIN BARS 25mm x BAR DIAMETER MIN.
2. DISTRIBUTION BARS 12mm Ø AT 200mm CENTRES.
3. CONCRETE TO BE NORMAL-CLASS N32 STANDARD STRENGTH GRADE OR HIGHER COMPLYING WITH THE REQUIREMENTS OF AS 1379. EXPOSURE CLASSIFICATIONS UP TO AND INCLUDING B1.
4. EXPOSED EDGES TO HAVE 20mm x 20mm CHAMFERS.
5. RAILS WITHIN LENGTH "L" SHALL BE EVENLY SPACED. THE MAXIMUM SPACING SHALL NOT EXCEED 600mm.
6. RAILS ARE 60.3mm DIAMETER GALVANISED TUBES 5.4mm THICK. THESE ARE TO BE GROUTED INTO THE SLOTS IN THE WALLS.
7. SLOPE OF ENDWALL TO MATCH BATTER SLOPE. MAXIMUM SLOPE 1IN 6.
8. ENDWALLS TO BE CONSTRUCTED IN ACCORDANCE WITH THE RELEVANT PROVISIONS OF AS 3600.
9. MINIMUM CONCRETE STRENGTH OF 25MPa AT 28 DAYS.

REV	DATE	REVISION DESCRIPTION	DRN	APPD
A	30/10/15	ORIGINAL ISSUE	S.W.	S.P.

GENERAL NOTES:

1. DRAWING NOT TO BE SCALED.
2. ALL MEASUREMENTS ARE IN MILLIMETRES UNLESS STATED OTHERWISE.
3. FOR UP-TO-DATE DRAWINGS PLEASE CONTACT WENTWORTH SHIRE COUNCIL (WSC) OR CHECK THE WSC WEBSITE.
4. ALL STANDARD DRAWINGS ARE TO BE USED IN CONJUNCTION WITH SD1-1 (STANDARD DRAWINGS CONDITIONS OF USE).

**WENTWORTH**  
**SHIRE COUNCIL**  
WORTH THE DRIVE

STANDARD DRAWINGS

DRIVEABLE CULVERT ENDWALL  
(PIPE CULVERTS UP TO 600mm Ø &  
BOX CULVERTS UP TO 600mm WIDE)

DATE CREATED:  
30/10/15

DRG. NO:

SD6-14

REV:  
A