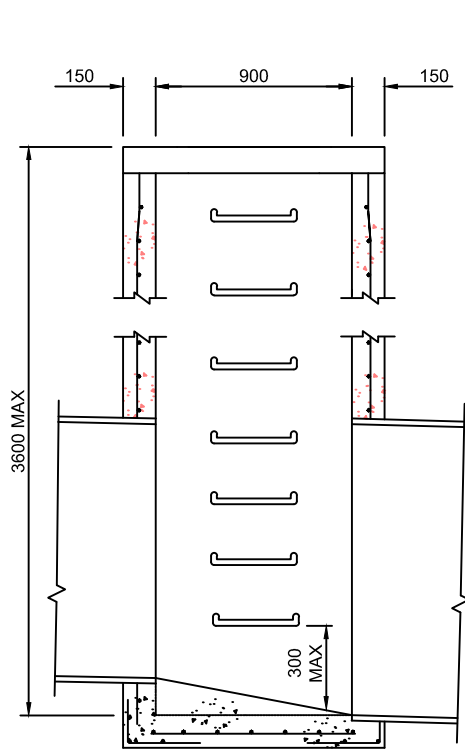
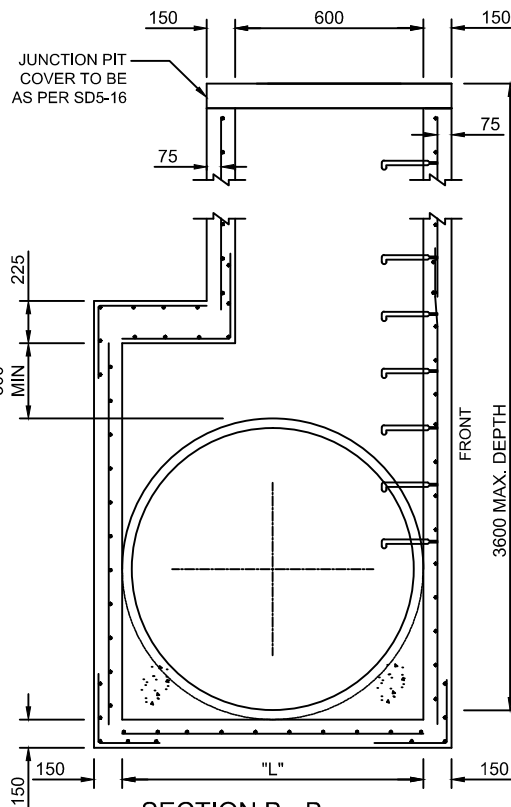


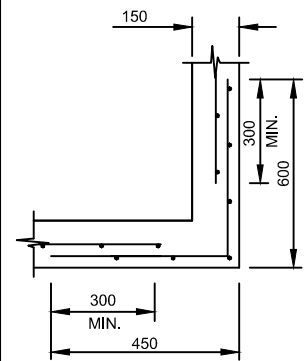
Drawing name: E:\my documents\lwork\ljobs\3WC\standards development\standard drawings\SD5-9 REV B.dwg (05 Nov, 2015)



SECTION A - A



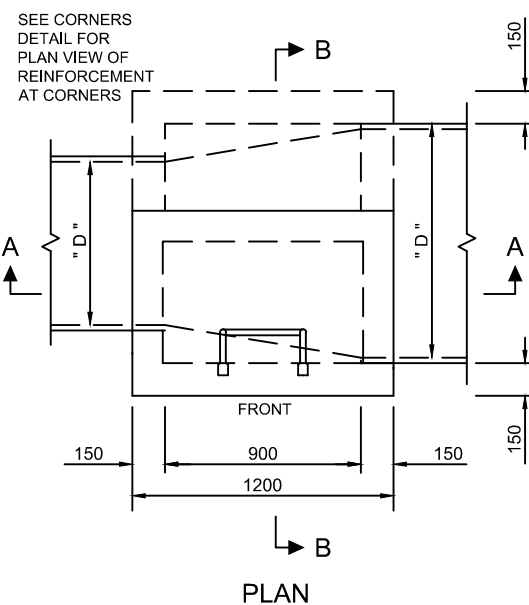
SECTION B - B



CORNERS DETAIL
(PLAN VIEW)

PIT LENGTH "L"	REINFORCEMENT
UP TO 1200	SL 92
1201 - 1800	RL 918
1801 - 2400	RL 1218

REINFORCEMENT DETAILS



PLAN

NOTES :

1. WIDTH OF HAUNCHING TO BE DETERMINED BY PIPE SIZE.
2. PIT INTERNAL DIMENSIONS: MINIMUM 900mm x 600mm.
3. PITS WITH HAUNCHING IN TWO DIRECTIONS REQUIRE SUBMISSION OF STRUCTURAL DESIGN AND APPROVAL FROM WENTWORTH SHIRE COUNCIL'S MANAGER, TECHNICAL SERVICES.
4. PITS 1500mm DEEP OR GREATER REQUIRE REINFORCEMENT.
5. PIT REINFORCEMENT TO BE IN ACCORDANCE WITH TABLE MESH IN SHAFT TO HAVE THE MAIN BARS POSITIONED HORIZONTALLY. LAPS TO BE 300mm MINIMUM COVER TO BE 50mm CORNER RETURN REINFORCEMENT TO BE FABRICATED OR EQUIVALENT BARS.
6. REINFORCEMENT TO HAVE 50mm CLEAR COVER.
7. PITS DEEPER THAN 1000mm TO BE FITTED WITH STEP IRONS AS PER SD5-7.
8. FOR TOP OF PIT AND PIT COVER DETAILS, REFER TO PIT SCHEDULE AND SD5-16.
9. COUNCIL APPROVAL MUST BE OBTAINED FOR THE USE OF PRECAST PITS. THE SUPPLIER MUST DEMONSTRATE THAT THE PITS HAVE ADEQUATE CAPACITY TO SUPPORT A COMBINATION OF THE FOLLOWING :
 - LATERAL LOADS - EARTH PRESSURE WITH 210 KN SURCHARGE
 - VERTICAL LOAD - 210 KN
 - HYDROSTATIC PRESSURE
 - COMPACTION PRESSURE (25KPa MIN.)
10. ALLOWANCE TO BE MADE FOR SUB-SURFACE DRAINS AS SPECIFIED.
11. MINIMUM CONCRETE STRENGTH TO BE 25 MPa.

REV.	DATE	REVISION DESCRIPTION	DRN.	APPD.
B	21/10/15	SD5-9 AND SD5-10 MERGED	S.W.	S.P.
A	13/5/15	ORIGINAL ISSUE	S.W.	S.P.

GENERAL NOTES:

1. DRAWING NOT TO BE SCALED.
2. ALL MEASUREMENTS ARE IN MILLIMETRES UNLESS STATED OTHERWISE.
3. FOR UP-TO-DATE DRAWINGS PLEASE CONTACT WENTWORTH SHIRE COUNCIL (WSC) OR CHECK THE WSC WEBSITE.
4. ALL STANDARD DRAWINGS ARE TO BE USED IN CONJUNCTION WITH SD1-1 (STANDARD DRAWINGS CONDITIONS OF USE).

**WENTWORTH
SHIRE COUNCIL**
WORTH THE DRIVE

STANDARD DRAWINGS

STORM WATER JUNCTION PIT
FOR PIPES OVER 600mm DIAMETER
AND 3600mm MAX. DEPTH

DATE CREATED:
22/4/15

DRG. NO:

SD5-9

REV:

B