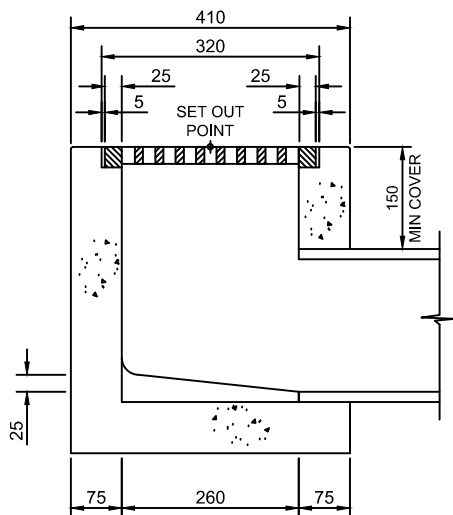
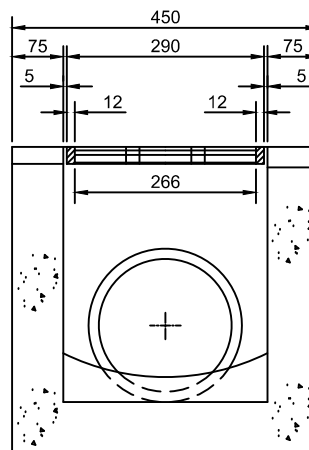


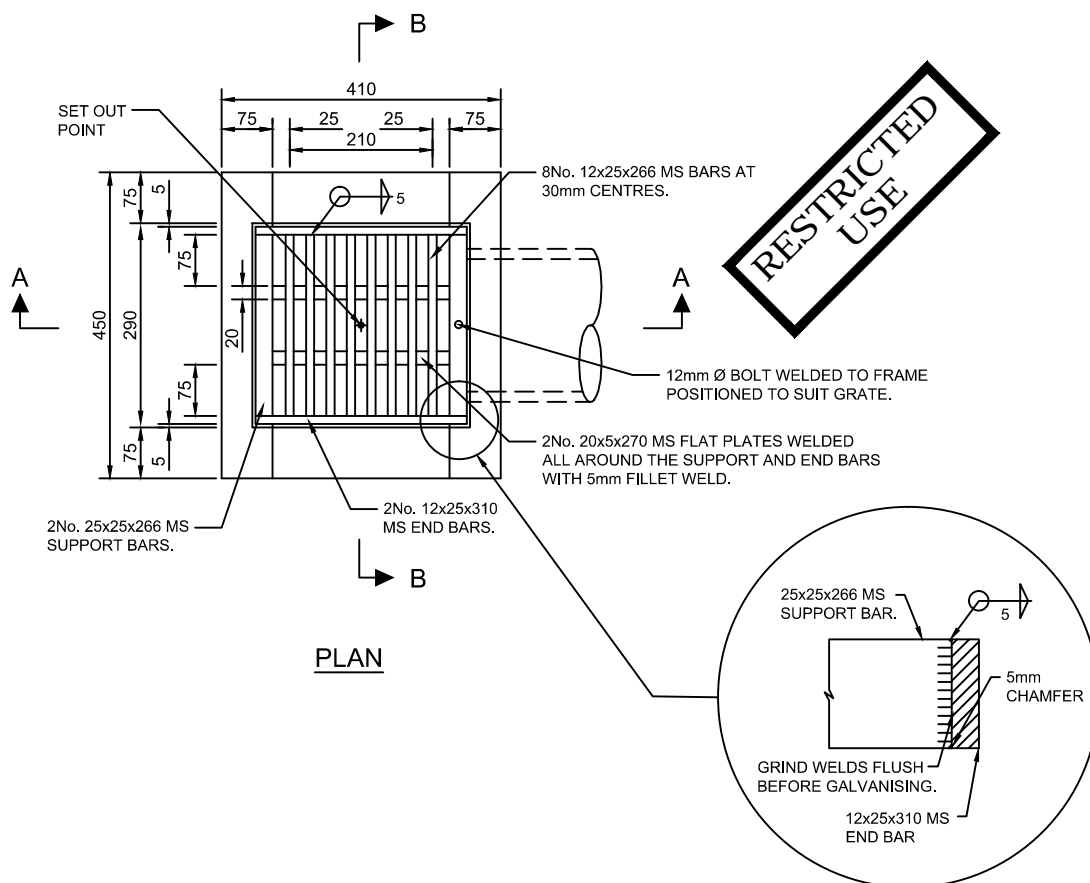
Drawing name: E:\my documents\work\03\WC\standards development\standard drawings\SD5-6 RESTRICTED REV A.dwg (04 Nov, 2015)



SECTION A - A



SECTION B - B



RESTRICTED
USE

NOTES :

1. GRATE TO BE CLASS C AND MADE FROM 12x25x266 MS BARS. THE TOP AND BOTTOM EDGES OF THE BAR ENDS TO BE CHAMFERED 5mm x 5mm BEFORE CONTINUOUSLY WELDING ALL AROUND. GRATE TO BE BIKE SAFE.
2. GRATE AND FRAME TO BE HOT DIP GALVANIZED UNLESS SPECIFIED OTHERWISE.
3. EXPOSED CONCRETE EDGES TO HAVE 10x10 CHAMFERS.
4. MINIMUM CONCRETE STRENGTH TO BE 25 MPa.
5. COUNCIL APPROVAL REQUIRED FOR ANY USE OF THIS PIT TYPE.

REV.	DATE	REVISION DESCRIPTION	DRN.	APPD.
A	21/10/15	ORIGINAL ISSUE	S.W.	S.P.

GENERAL NOTES:

1. DRAWING NOT TO BE SCALED.
2. ALL MEASUREMENTS ARE IN MILLIMETRES UNLESS STATED OTHERWISE.
3. FOR UP-TO-DATE DRAWINGS PLEASE CONTACT WENTWORTH SHIRE COUNCIL (WSC) OR CHECK THE WSC WEBSITE.
4. ALL STANDARD DRAWINGS ARE TO BE USED IN CONJUNCTION WITH SD1-1 (STANDARD DRAWINGS CONDITIONS OF USE).

**WENTWORTH
SHIRE COUNCIL**
WORTH THE DRIVE

STANDARD DRAWINGS

GRATED PIT FOR LOW POINTS
WITHIN NATURE STRIPS

DATE CREATED:
21/10/15

DRG. NO:

SD5-6

REV:

A