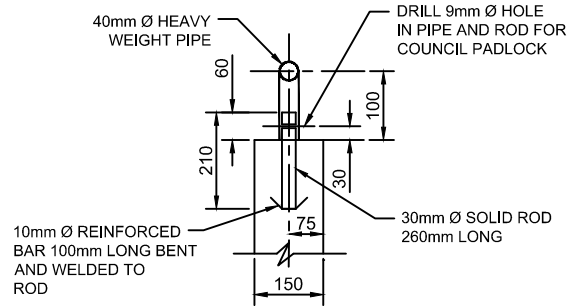
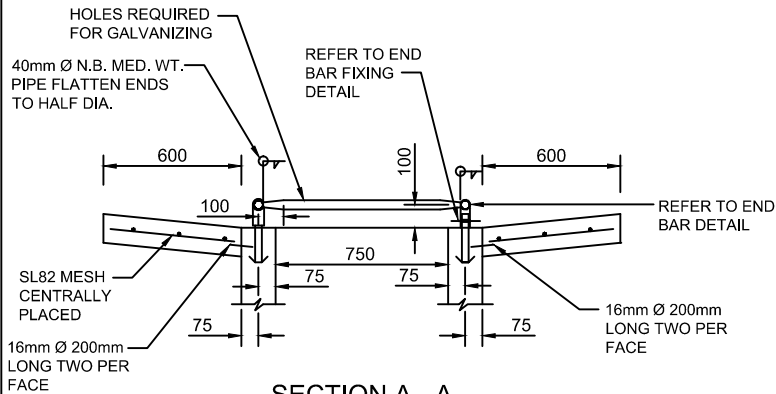


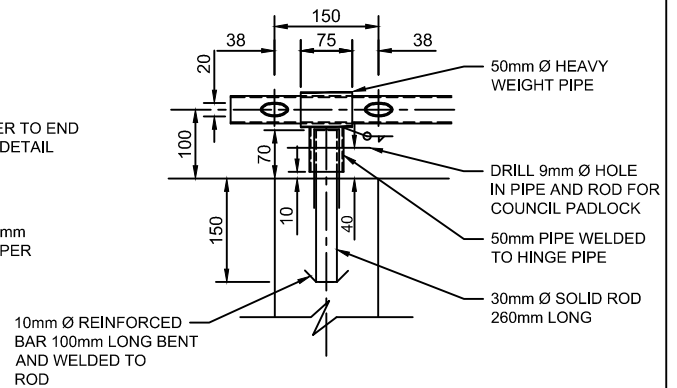
END BAR DETAIL



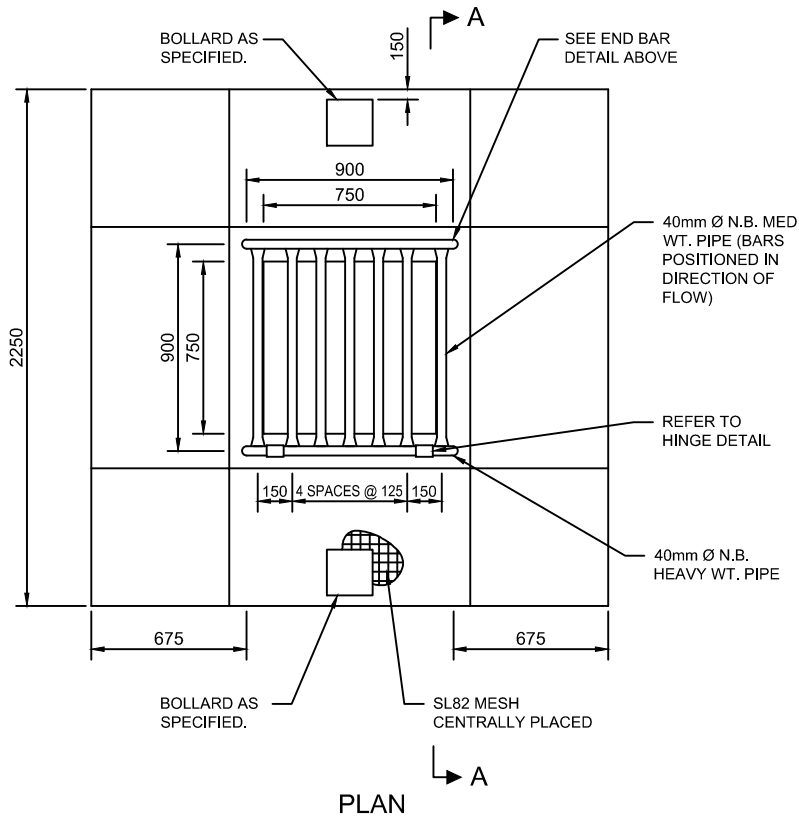
END BAR FIXING DETAIL



SECTION A - A



HINGE DETAIL



PLAN

NOTES:

1. ALL WELDS TO BE 6mm FILLET UNLESS SHOWN OTHERWISE.
2. AFTER FABRICATION GRATE AND FIXING ROD TO BE HOT DIPPED GALVANIZED.
3. PADLOCKS TO BE PURCHASED FROM COUNCIL.
4. PROVIDE 2 SQUARE TYPE BOLLARDS AROUND PIT IN APRON.
5. TO BE LOCATED IN FLOOD-WAYS ONLY.
6. MINIMUM CONCRETE STRENGTH OF 25MPa AT 28 DAYS.

Drawing name: E:\my documents\work\03\standards development\standard drawings\SD5-3 REV A.dwg (05 Nov, 2015)

REV.	DATE	REVISION DESCRIPTION	DRN.	APPD.
A	21/10/15	ORIGINAL ISSUE	S.W.	S.P.

GENERAL NOTES:

1. DRAWING NOT TO BE SCALED.
2. ALL MEASUREMENTS ARE IN MILLIMETRES UNLESS STATED OTHERWISE.
3. FOR UP-TO-DATE DRAWINGS PLEASE CONTACT WENTWORTH SHIRE COUNCIL (WSC) OR CHECK THE WSC WEBSITE.
4. ALL STANDARD DRAWINGS ARE TO BE USED IN CONJUNCTION WITH SD1-1 (STANDARD DRAWINGS CONDITIONS OF USE).

**WENTWORTH
SHIRE COUNCIL**
WORTH THE DRIVE

STANDARD DRAWINGS

**RAISED PIT GRATE
(FOR PIT OPENING
750 x 750 IN FLOODWAYS)**

DATE CREATED:
21/10/15

DRG. NO:

SD5-3

REV:

A