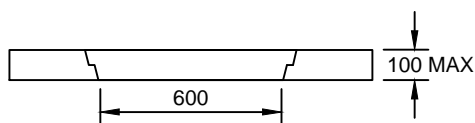
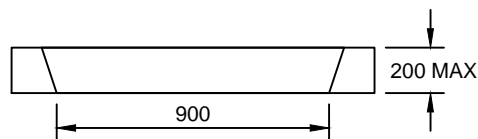


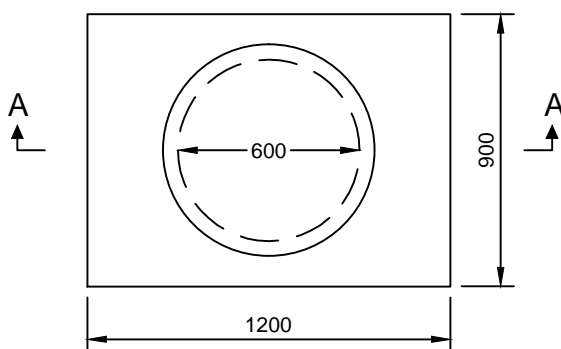
Drawing name: E:\my documents\work\3WC\standards development\standard drawings\SD5-16 REV A.dwg (04 Nov, 2015)



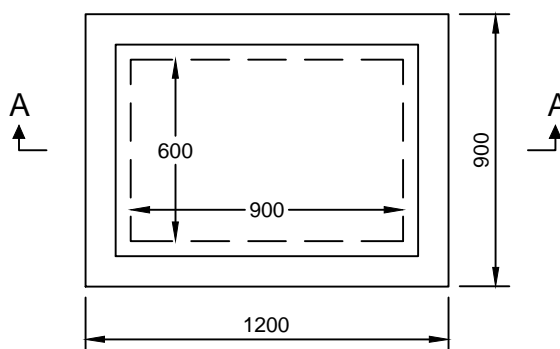
SECTION A-A



SECTION A-A



CLASS B  
JUNCTION PIT COVER PLAN



CLASS D  
JUNCTION PIT COVER PLAN

**NOTES:**

1. CLASS D HEAVY DUTY JUNCTION PIT COVER TO BE USED WHERE;
  - JUNCTION PITS ARE LOCATED WITHIN THE ROAD PAVEMENT
  - JUNCTION PITS ARE LOCATED WITHIN 1m OF A VEHICLE CROSSING
  - AS SPECIFIED OR DIRECTED BY A WENTWORTH SHIRE COUNCIL OFFICER
  - JUNCTION PIT COVER IS POSSIBLY SUBJECTED TO HEAVY TRAFFIC
- CLASS B LIGHT DUTY JUNCTION PIT COVER TO BE USED IN OTHER SITUATIONS UNLESS SPECIFIED OTHERWISE.
2. LIFTING KEYHOLES AND LUGS TO BE PROVIDED IN ACCORDANCE WITH AS3996 - 2006.
3. ALL JUNCTION PIT COVERS, INSERTS, FRAMES, LIFTING KEYHOLES AND LUGS SHALL COMPLY WITH AS3996-2006.
4. JUNCTION PIT COVERS TO BE A WENTWORTH SHIRE COUNCIL APPROVED TYPE AND MODEL.

A	13/5/15	ORIGINAL ISSUE		S.W.	S.P.
REV.	DATE	REVISION DESCRIPTION		DRN.	APPD.

**GENERAL NOTES:**

1. DRAWING NOT TO BE SCALED.
2. ALL MEASUREMENTS ARE IN MILLIMETRES UNLESS STATED OTHERWISE.
3. FOR UP-TO-DATE DRAWINGS PLEASE CONTACT WENTWORTH SHIRE COUNCIL (WSC) OR CHECK THE WSC WEBSITE.
4. ALL STANDARD DRAWINGS ARE TO BE USED IN CONJUNCTION WITH SD1-1 (STANDARD DRAWINGS CONDITIONS OF USE).

**WENTWORTH  
SHIRE COUNCIL**  
WORTH THE DRIVE

STANDARD DRAWINGS

JUNCTION PIT COVERS  
(INSERT AND FRAME)

DATE CREATED:  
13/5/15

DRG. NO:

**SD5-16**

REV:

**A**