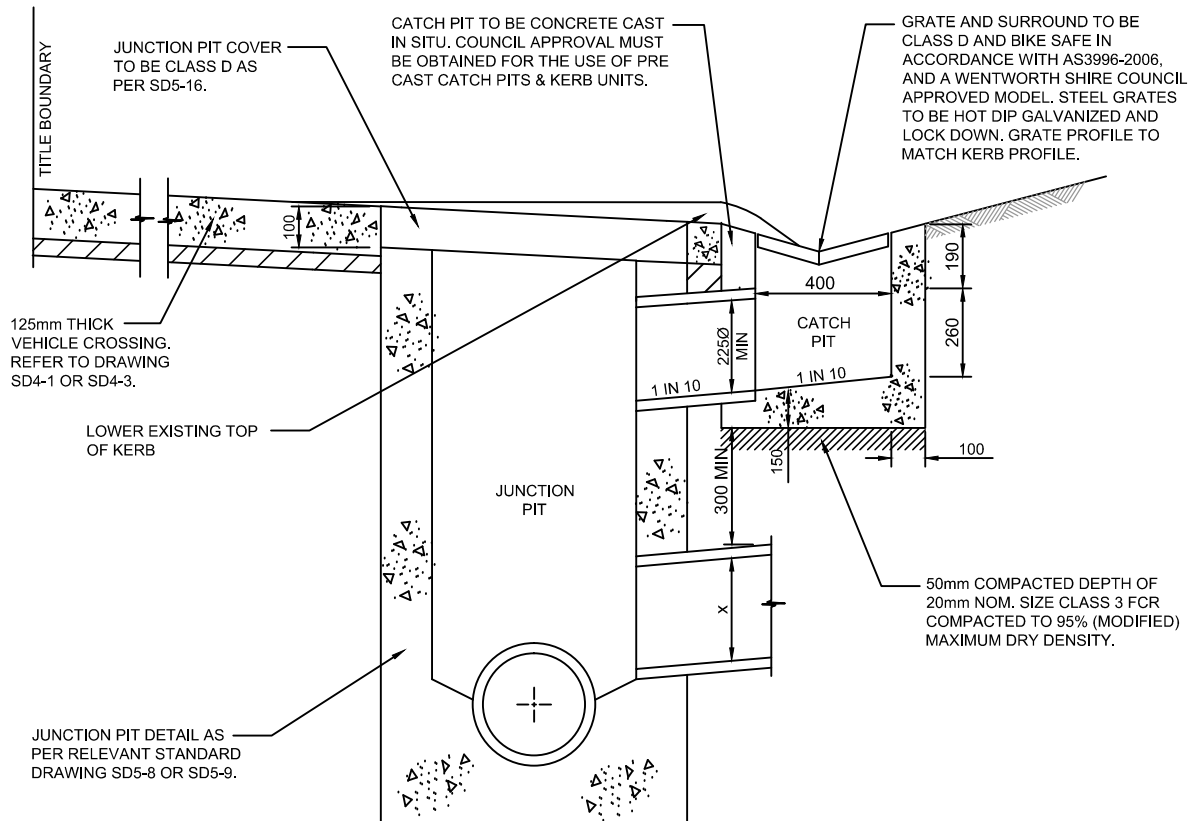


**RESTRICTED
USE**



GRATED KERB CATCH PIT FOR VEHICLE CROSSINGS

NOTES:

1. FOR VEHICLE CROSSING DETAILS, REFER TO DRAWINGS SD4-1 TO SD4-6
2. FOR PIT DETAILS, REFER TO DRAWINGS SD5-8 AND SD5-9.
3. MANHOLE COVER AND SURROUND TO BE CLASS D.
4. MINIMUM CONCRETE STRENGTH OF 25MPa AT 28 DAYS.

A	28/10/15	ORIGINAL ISSUE		S.W.	S.P.
REV.	DATE	REVISION DESCRIPTION		DRN.	APPD.

GENERAL NOTES:

1. DRAWING NOT TO BE SCALED.
2. ALL MEASUREMENTS ARE IN MILLIMETRES UNLESS STATED OTHERWISE.
3. FOR UP-TO-DATE DRAWINGS PLEASE CONTACT WENTWORTH SHIRE COUNCIL (WSC) OR CHECK THE WSC WEBSITE.
4. ALL STANDARD DRAWINGS ARE TO BE USED IN CONJUNCTION WITH SD1-1 (STANDARD DRAWINGS CONDITIONS OF USE).

**WENTWORTH
SHIRE COUNCIL**
WORTH THE DRIVE

STANDARD DRAWINGS

GRATED KERB CATCH PIT AT VEHICLE CROSSINGS

DATE CREATED:
28/10/15

DRG. NO:

SD5-15

REV:
A