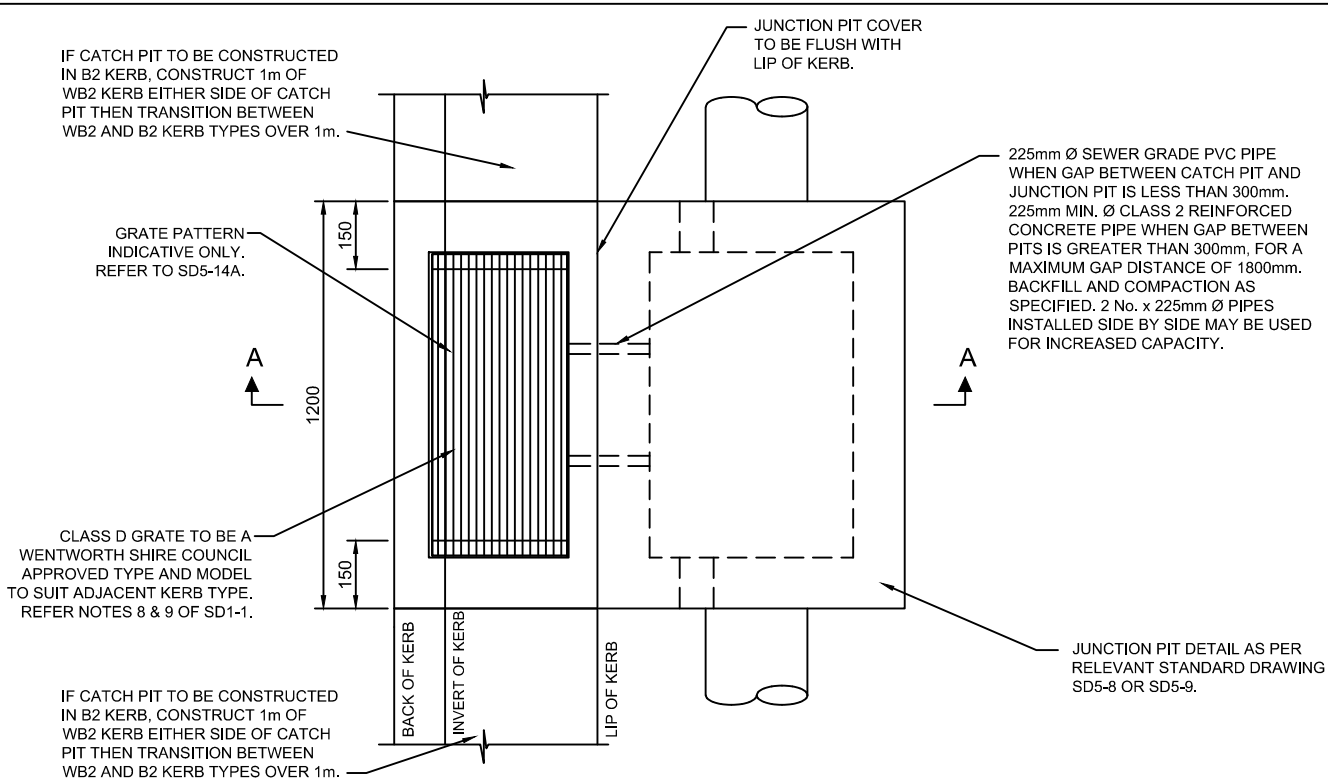
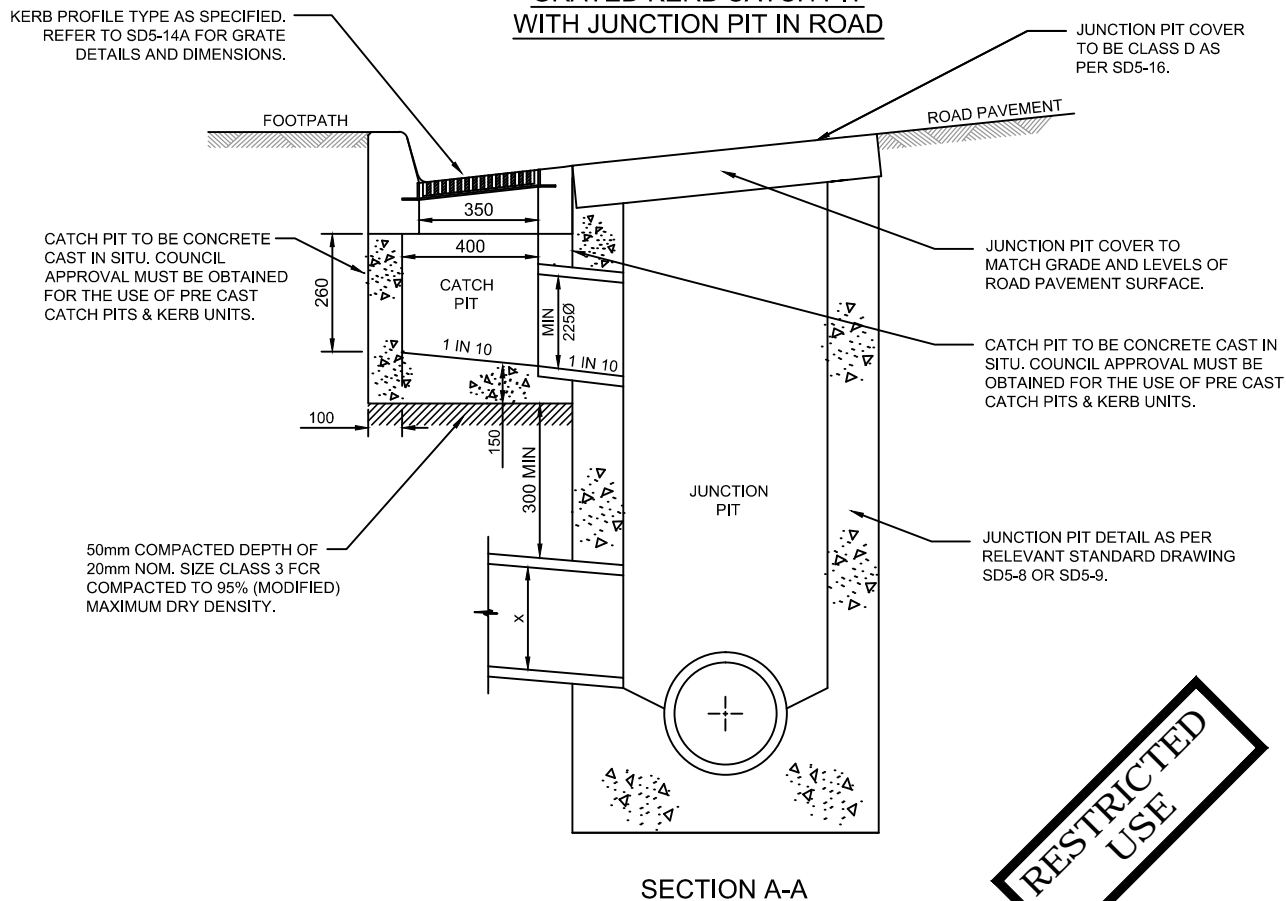


Drawing name: E:\my documents\work\0jobs\3WC\standards development\standard drawings\SD5-14(ii) RESTRICTED REV A.dwg (06 Nov, 2015)



GRATED KERB CATCH PIT WITH JUNCTION PIT IN ROAD



NOTE:

1. MINIMUM CONCRETE STRENGTH OF 25MPa AT 28 DAYS.

REV.	DATE	REVISION DESCRIPTION	DRN.	APPD.
A	23/10/15	ORIGINAL ISSUE	S.W.	S.P.

GENERAL NOTES:

1. DRAWING NOT TO BE SCALED.
2. ALL MEASUREMENTS ARE IN MILLIMETRES UNLESS STATED OTHERWISE.
3. FOR UP-TO-DATE DRAWINGS PLEASE CONTACT WENTWORTH SHIRE COUNCIL (WSC) OR CHECK THE WSC WEBSITE.
4. ALL STANDARD DRAWINGS ARE TO BE USED IN CONJUNCTION WITH SD1-1 (STANDARD DRAWINGS CONDITIONS OF USE).

**WENTWORTH
SHIRE COUNCIL**
WORTH THE DRIVE

STANDARD DRAWINGS

GRATED KERB CATCH PIT WITH JUNCTION PIT IN ROAD FOR WB2 KERB

DATE CREATED:
23/10/15

DRG. NO:
SD5-14(ii)

REV:
A

**RESTRICTED
USE**