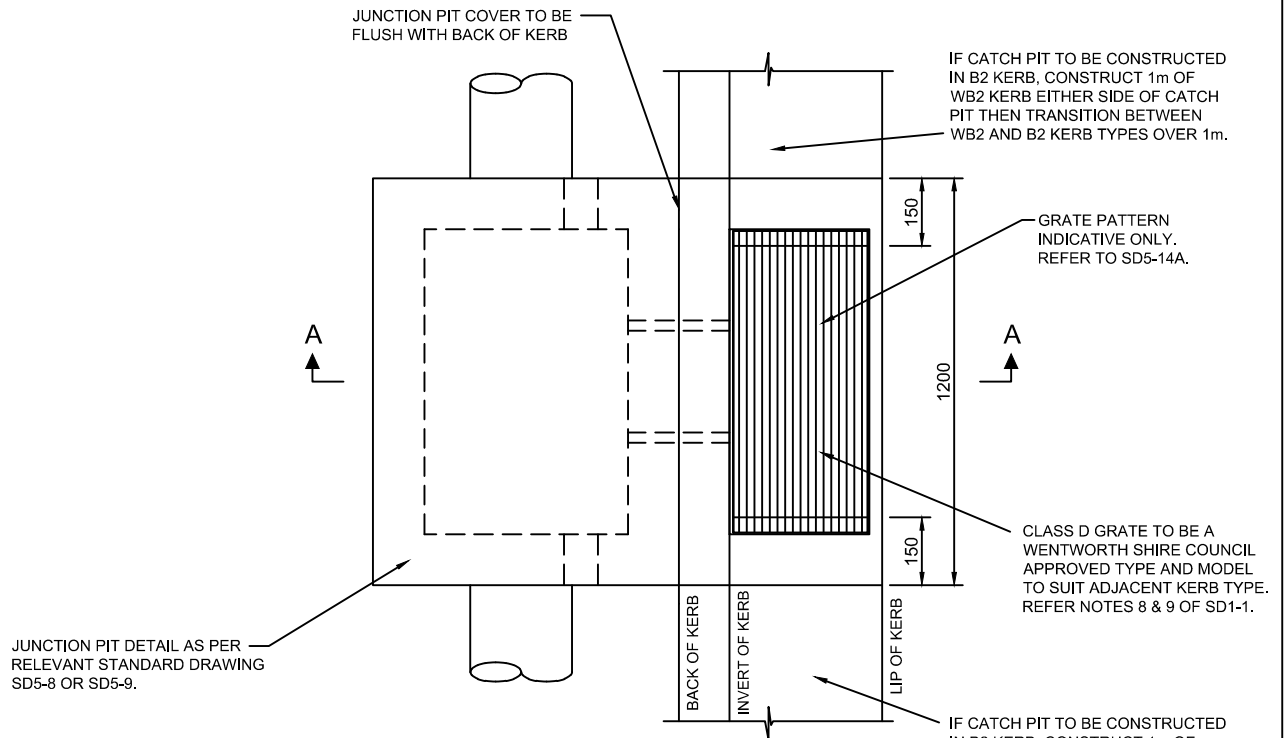
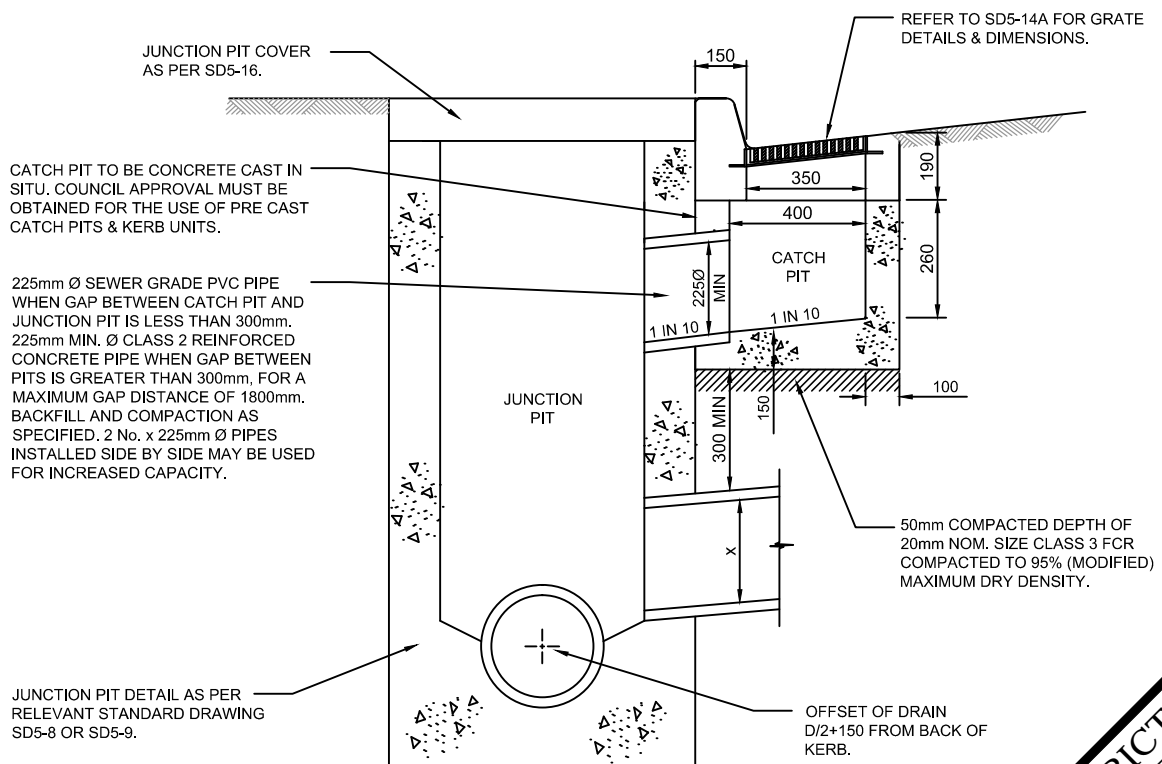


Drawing name: E:\my documents\work\0\obs\3\WC\standards development\standard drawings\SD5-14(i) RESTRICTED REV A.dwg (06 Nov. 2015)



### GRATED KERB CATCH PIT WITH JUNCTION PIT



### SECTION A-A

#### NOTE:

1. MINIMUM CONCRETE STRENGTH OF 25MPA AT 28 DAYS.



REV.	DATE	REVISION DESCRIPTION	DRN.	APPD.
A	23/10/15	ORIGINAL ISSUE	S.W.	S.P.

#### GENERAL NOTES:

1. DRAWING NOT TO BE SCALED.
2. ALL MEASUREMENTS ARE IN MILLIMETRES UNLESS STATED OTHERWISE.
3. FOR UP-TO-DATE DRAWINGS PLEASE CONTACT WENTWORTH SHIRE COUNCIL (WSC) OR CHECK THE WSC WEBSITE.
4. ALL STANDARD DRAWINGS ARE TO BE USED IN CONJUNCTION WITH SD1-1 (STANDARD DRAWINGS CONDITIONS OF USE).

**WENTWORTH  
SHIRE COUNCIL**  
WORTH THE DRIVE

### STANDARD DRAWINGS

### GRATED KERB CATCH PIT WITH JUNCTION PIT FOR WB2 KERB

DATE CREATED:  
23/10/15

DRG. NO:  
**SD5-14(i)**

REV:  
**A**