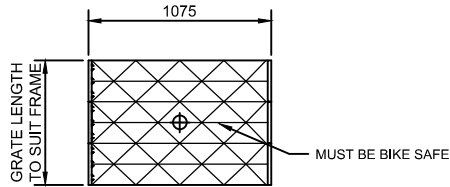
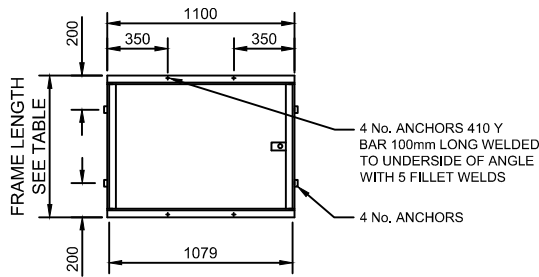


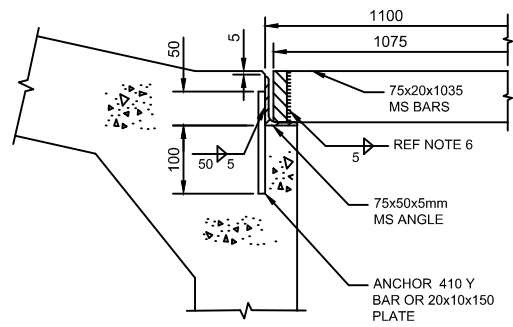
PART SECTION B-B



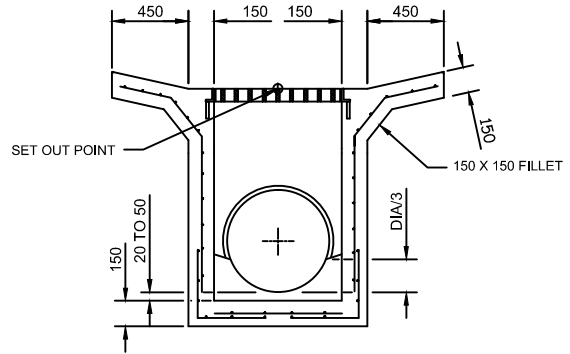
GRATE UNIT



GRATE FRAME



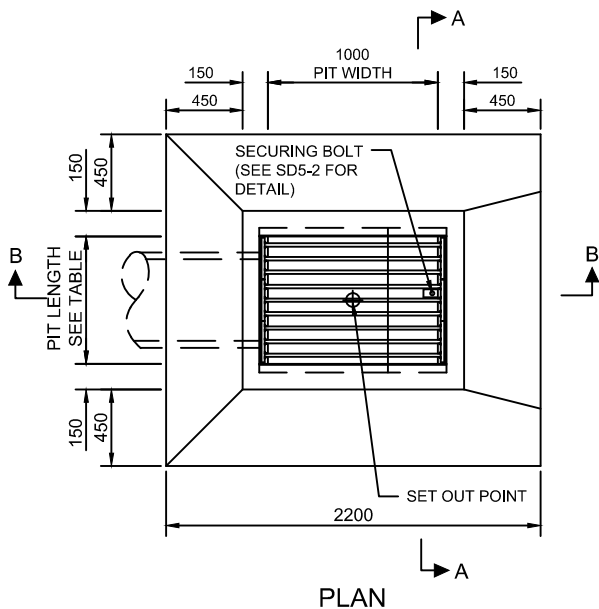
FRAME SEATING DETAIL



SECTION A-A

| PIT TYPE | PIT TOP INTERNAL DIM | | FRAME LENGTH | NUMBER OF GRATE UNITS |
|----------|----------------------|-------|--------------|-----------------------|
| | LENGTH | WIDTH | | |
| 1 | 750 | 1000 | 750 | 3 |
| 2 | 1000 | 1000 | 1000 | 4 |
| 3 | 1500 | 1000 | 1500 | 6 |
| 4 | 2000 | 1000 | 2000 | 8 |
| 5 | 2500 | 1000 | 2500 | 10 |

PIT, FRAME AND GRATE DETAILS



PLAN

NOTES:

1. THIS PIT IS FOR USE IN MEDIANS AND TABLE DRAINS. IT SHALL NOT BE USED IN ROADWAYS, FOOTPATHS OR BICYCLE PATHS.
2. GRATE TO BE CLASS B IN ACCORDANCE WITH AS 3996 AND BIKE SAFE.
3. GRATE FRAME TO BE CONSTRUCTED FROM 75x50x5mm MS ANGLE. CORNER JOINTS SHALL BE WELDED ON UNDERSIDE OF HORIZONTAL LEG AND ON THE INSIDE OF THE VERTICAL LEG WITH SIZE 5 FILLETS.
4. ANCHOR SPACING NOT TO EXCEED 400mm.
5. EXPOSED CONCRETE EDGES TO HAVE 10x10 CHAMFERS.
6. PIT REINFORCEMENT TO BE IN ACCORDANCE WITH SD5-8 AND SD5-9.
7. GRATES AND FRAMES TO BE HOT DIPPED GALVANIZED.
8. ALL PITS TO BE LOCATED A MINIMUM OF 1m CLEAR OF VEHICLE CROSSINGS.
9. ALL SECTIONS OF GRATE TO BE BOLTED DOWN.
10. MINIMUM CONCRETE STRENGTH OF 25MPa AT 28 DAYS.

| REV. | DATE | REVISION DESCRIPTION | DRN. | APPD. |
|------|----------|----------------------|------|-------|
| A | 21/10/15 | ORIGINAL ISSUE | S.W. | S.P. |

GENERAL NOTES:

1. DRAWING NOT TO BE SCALED.
2. ALL MEASUREMENTS ARE IN MILLIMETRES UNLESS STATED OTHERWISE.
3. FOR UP-TO-DATE DRAWINGS PLEASE CONTACT WENTWORTH SHIRE COUNCIL (WSC) OR CHECK THE WSC WEBSITE.
4. ALL STANDARD DRAWINGS ARE TO BE USED IN CONJUNCTION WITH SD1-1 (STANDARD DRAWINGS CONDITIONS OF USE).

**WENTWORTH
SHIRE COUNCIL**
WORTH THE DRIVE

STANDARD DRAWINGS

**GRATED PIT WITH
DEPRESSED GRATE FOR
MEDIANS AND TABLE DRAINS**

DATE CREATED:
21/10/15

DRG. NO:

SD5-1

REV: **A**