



# Pollution Incident Response Management Plan

## Wentworth Sewage Treatment Ponds

Environmental Protection Licence number 5566

REPAIRED BY | Wentworth Shire Council

ADDRESS | 26-28 Adelaide St, Wentworth NSW, 2648

TELEPHONE | 03 5027 5027

EMAIL | [council@wentworth.nsw.gov.au](mailto:council@wentworth.nsw.gov.au)

RESPONSIBLE OFFICER | Manager Works

REVISION | 6 - 11/08/2020

REVIEW DATE | 11/02/2021

REFERENCE | DOC/17/5722

### 3.3.1 Description and likelihood of hazards [clause 98C (1)(a) and (b)]

SEWAGE UNTREATED					
Event	Control Measure	Hazard	Likelihood	Impact	Risk Rating
Failure of Sedimentation Tank	Site bunded	Spill, contained on site	E	2	L
		Spill off site	E	4	M
Failure of Filter	Channel to humus tank, site bunded	Nil	E	2	L
Failure of Humus Tank	Site bunded	Nil	E	2	L
Pipe Failure	Site bunded	Spill, contained on site	E	2	L
Power Failure	Influent is pumped, system requires no power 90% of time	Nil	E	1	L
Flood	Bund around site	Release to flood water	E	4	M
SEWAGE TREATED					
Event	Control Measure	Hazard	Likelihood	Impact	Risk Rating
Flood	Request to release to flood water (EPA)	Release to flood water	E	3	M
DIGESTED SLUDGE					
EVENT	CONTROL MEASURE	HAZARD	LIKELIHOOD	IMPACT	RISK RATING
Failure of Sludge Digester	Site bunded, tanks in ground.	Spill, contained on site	E	2	L

The events above can be expected to result in onsite releases, off site releases or releases to flood water of sewage.

### 3.3.2 Pre-emptive actions to be taken [clause 98C(1)(c)]

No pre-emptive actions are deemed necessary as most events are likely to require the use of educator equipment (vacuum truck) hired externally.

### 3.3.3 Inventory of pollutants [clause 98C(1)(d) and (e)]

Inventory of potential pollutants:

Pollutant	Volume	Locations
Sewage untreated	0.5 ML	Sedimentation tanks, media filters, humus tanks
Sewage treated	3 ML	Evaporation area
Digested Sludge	10 kL	Digester tanks

Plant general arrangement plan section 3.3.8

### 3.3.4 Safety equipment [clause 98C(1)(f)]

Below is a list of the safety equipment and other devices that are used to minimise the risks to human health or the environment and to contain or control a pollution incident.

Item	Description	Location
<b>Equipment</b>		
Eductor Truck	Eductor or vacuum trucks are used for spill clean-up. They remove excess liquids and solids	Contractor supplied
Mobile pump	flex drive or similar pumps are used for spill clean-up. They remove excess liquids.	Vehicles
Shovels, barrows etc.	minor equipment is used to clean up spills.	on site, Vehicles
<b>PPE</b>		
Safety glasses, Gloves, Gum boots, biocide hand cleaner.	These items are used to minimise skin contact of the spilled material when working at the spill location.	Vehicles
<b>Infrastructure</b>		
Site Bund	A bund was included in the construction of the plant. The bund encompasses the main infrastructure and will contain most spills on site	On Site

### 3.3.5 Contact details [clause 98C(1)(g) and (h)]

The below personnel are responsible for activating these plans and managing the response to incidents including those authorised to notify relevant authorities.

Key Personnel for incident response.

Name	Position	Role	24-hour contact details
Ken Ross	General Manager	Public liaison	(03) 5027 5027
Geoff Gunn	Director Roads and Engineering		(03) 5027 5027
Allan Eastmond	Manager Works	Incident controller	(03) 5027 5027
Jack Garraway	Team Leader Water and Wastewater	Equipment Manager	(03) 5027 5027
Wentworth Shire Council	Finance Department	Insurance notification	(03) 5027 5027
On call	Water and Wastewater Operator		(03) 5027 5027

Agency contact details:

Agency	Contact Details
EPA	Environment Line – 131 555
Fire and Rescue	000
Department of Health	Business Hours - 08 8080 1499 PO Box 457, Broken Hill, NSW 2880 After Hours – Public Health Officer NSW - David Farrell - (08) 8080 1504
WorkCover NSW	phone 13 10 50
State water	Megan Patterson Risk and Assurance Organiser State Water Corporation PH: 02 6760 2012 MOB: 0427 277 591
NSW office of water	Ben Maloney 0429 604 409

The EPA has developed a notification protocol <https://www.environment.nsw.gov.au/pollution/>

Firstly, call 000 if the incident presents an immediate threat to human health or property.

Fire and Rescue NSW, the NSW Police and the NSW Ambulance Service are the first responders, they are responsible for controlling and containing incidents.

Local contractors that are able to assist

Company	Contact	Description	24-hour contact details
RDG electrical	Rob Gulbin	Electrical, control and RTU	0408 236 833
Bertalli waste management	Tim Bertalli	Eduction (vacuum) Truck	0419 556 803
Pipeline imaging	Steve Livingstone	Jetting, Vacuuming and CCTV	0427 302 301
Coats Hire		Pump hire	13 1552
Forbes Wilson		Pump hire	0488 212 222

### 3.3.6 Communicating with neighbours and the local community [clause 98C(1)(i)]

The Wentworth Sewage Treatment Plant is located well away from residential dwellings, commercial districts and industrial areas. In the event that a pollution incident occurs, an attempt will be made to advise any potentially affected parties. It may be possible for spills to enter waterways. In these instances, the relevant water authorities will be notified by the incident controller. A media release will be released advising the potential water users about the incident and resulting hazards, include advice to avoid the use of the water.

As the population is low in the vicinity, mass notification may be an inefficient method of disseminating information. Contacting affected parties directly may be the best method.

### 3.3.7 Minimising harm to persons on the premises [clause 98C(1)(j)]

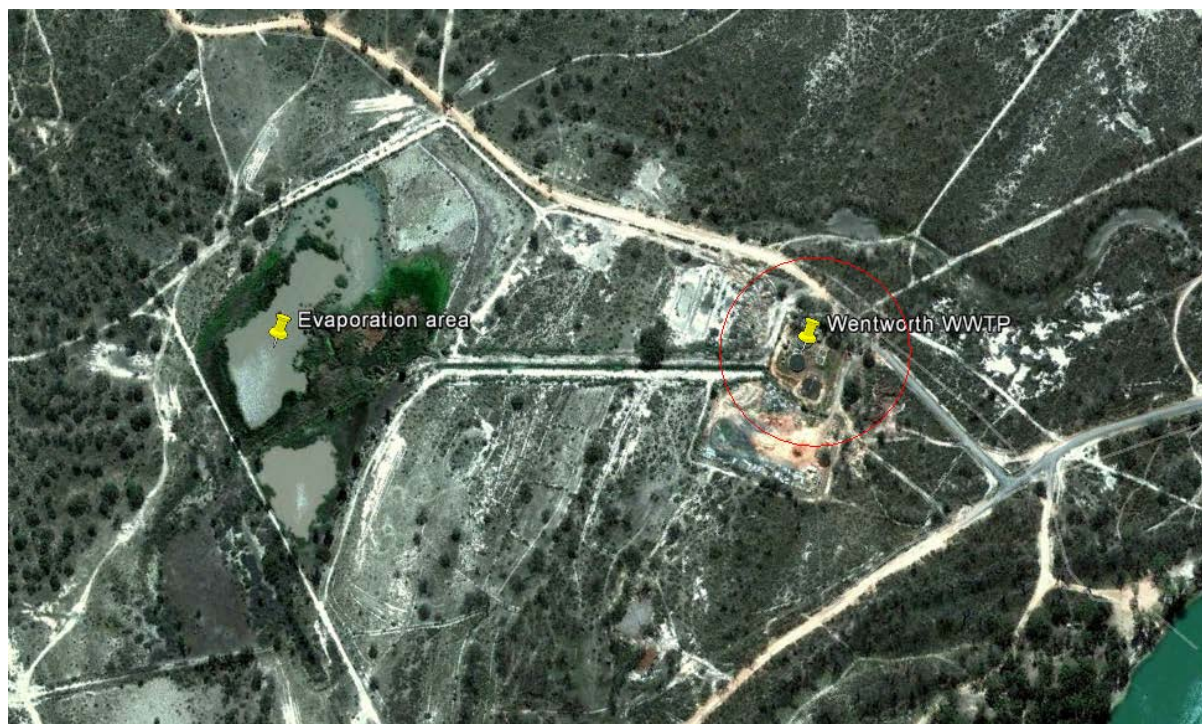
The effluent and sludge present on site may present a danger to personal health if contact with eyes or mucus membranes occurs or if swallowed.

Direct contact should be avoided.

Relevant work place procedures and safe work method statements must be followed.

### 3.3.8 Maps [clause 98C(1)(k)]

The below detailed map shows the location of the premises, the surrounding area that is likely to be affected by a pollution incident (circled), the location of potential pollutants on the premises.



*Figure 1* - Shows the Wentworth wastewater treatment plant location and the evaporation area for the plant effluent. The red circle denotes the area likely to be affected in the event of a sewage off site release.

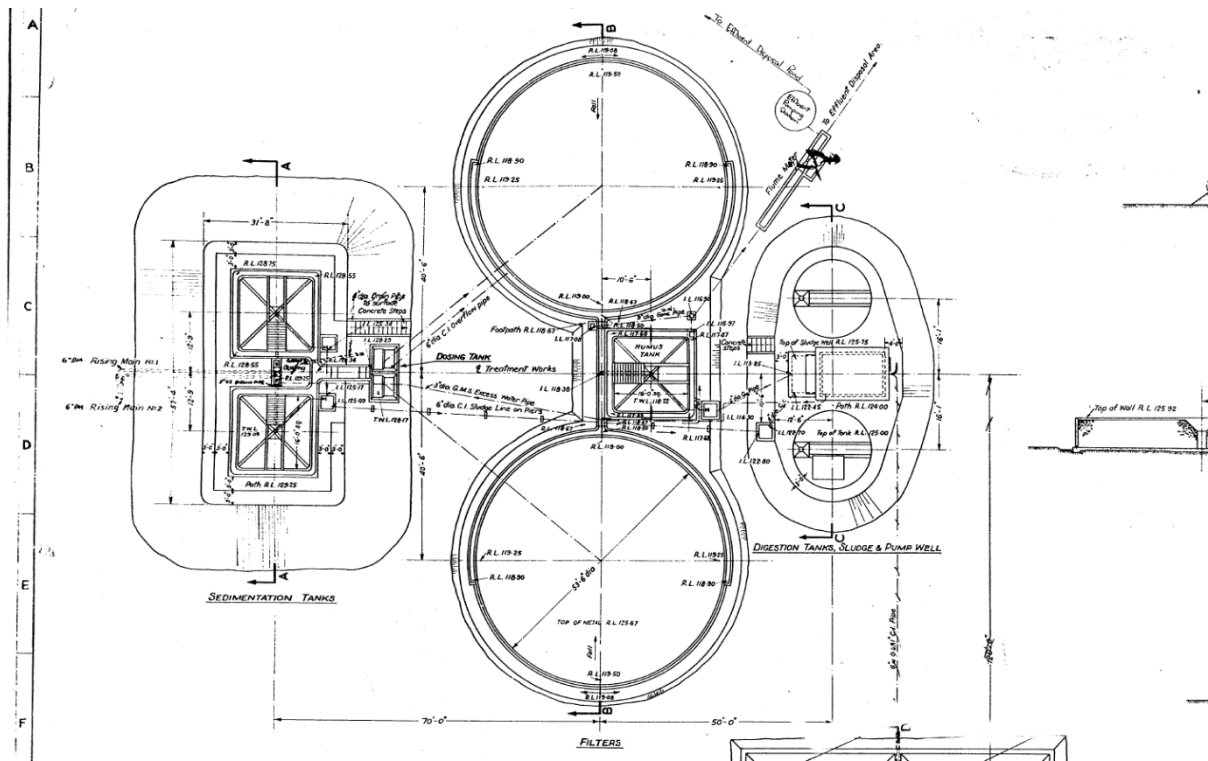


Figure 2 - Shows the location of potential pollutants on the site. Sedimentation tanks on the left contain untreated sewage, the filters in the middle contain untreated sewage, the humus tank in the centre contains treated effluent and the digesters on the right contain digested sludge.

There is no storm water system on site or nearby.

### 3.3.9 Actions to be taken during or immediately after a pollution incident [clause 98C(1)(I)]

Firstly, call 000 if the incident presents an immediate threat to human health or property. Fire and Rescue NSW, the NSW Police and the NSW Ambulance Service are the first responders, as they are responsible for controlling and containing incidents.

If the incident does not require an initial combat agency, or once the 000 call has been made, notify the relevant authorities in the following order. The 24-hour hotline for each authority is given when available:

- the EPA – phone Environment Line on 131 555
- the Ministry of Health via the local Public Health Unit
- the WorkCover Authority – phone 13 10 50
- Fire and Rescue NSW – phone 000.

The appropriate contact and details for the Public Health Unit are available in section 3.3.5 above.

#### Non containment (Spill):

For sewage non-containment follow the actions below:

- If the spill is continuing and a sewage pump station is contributing, turn off the pump station.
- If gravity flows are contributing to the spill and the problem is not likely to be resolved in a short time (e.g. clearing a blockage) then a plug should be fitted to the upstream manhole if practicable.

- A vacuum/eductor truck should be hired to remove any spilled sewage/sludge.

The Water and Wastewater department are responsible for the above actions.

- If the spill enters water ways then State Water should be notified.
- If the spill is significant then the NSW office of water should be notified.

Consider if disinfection is required. Natural drying and sunlight is likely to be sufficient to disinfect the site.

If pump station failure is a contributing factor, an alternative pump may be required. Pump stations may be able to be serviced with a vacuum truck while repairs are being made.

**Flood:**

For flooding events when the plant or evaporation area are inundated, the relevant authorities should be notified. As the flow will be very high dilution will be a control factor.

There may be no practicable actions to take. In this instance affected parties should be advised.

**3.3.10 Staff training [clause 98C(1)(m)]**

As the risk for this facility is considered to be low, training will be limited to advice given at toolbox meetings and when new employees are inducted.