

2011/2012 Annual Report



Social Plan 2009 - 2014

APPENDIX E



**WENTWORTH
SHIRE
COUNCIL**

**SOCIAL PLAN
2009-2014**



Adopted by Council 24 June 2009

Contents

Introduction	3
Legislative Requirements	3
Objectives.....	3
Monitoring and Reporting	3
Scope and Purpose	4
Methodology.....	4
Mission and Values – Wentworth Shire Council’s Mission	4
Core Values.....	4
Supporting values.....	4
Executive Summary	5
Overview – Wentworth Shire.....	6
Demographic Profile - Wentworth Shire	7
Age, Gender and Ethnicity.....	7
Selected Medians	7
Demographic Change – Wentworth Shire.....	8
Resident Population Growth Rate	8
Components of Population Growth.....	9
Labour Force Status	10
Major Industries of Employment	10
Buronga and Gol Gol	14
Target Group Profiles	16
Children	16
Young People	17
Overview Children and Young People	18
Aboriginal and Torres Strait Islanders	19
People with Disabilities.....	23
Generic Issues	24
Economic Development and Sustainability of Township Services	24
Rates of Crime.....	24
Volunteering and Unpaid Assistance.....	25

Library Visits and Membership	25
Identified Needs – By Township Community Cluster	27
Community Need and Strategy 1 – Develop Communication Strategy	28
Community Need and Strategy 2 – Develop Safe Communities Strategy	29
Community Need and Strategy 3 – Develop Recreation and Culture Strategy.....	30
Community Need and Strategy 4 – Develop Economic Development and Sustainability Strategy	31
Community Need and Strategy 5 – Develop Strategy for Conservation and Protection of the Environment	32
Community Need and Strategy 6 – Develop Transport Strategy	33
Needs and Strategies Specific to each Community	34
Needs Specific to Community – Wentworth.....	34
Needs Specific to Community – Buronga and Gol Gol	34
Needs Specific to Community – Dareton	35
Needs Specific to Community – Pooncarie and Ellerslie	35
Identified Needs – By Target Group	36
Needs Specific to Target Group – Children	37
Needs Specific to Target Group - Young People	38
Needs Specific to Target Group - Indigenous People.....	40
Needs Specific to Target Group - Older People	42
Needs Specific to Target Group - Women	43
Needs Specific to Target Group - People from Culturally and Linguistically Diverse (CALD) Backgrounds	45
Needs Specific to Target Group - People Living with a Disability	45
Appendix A – ABS Census Quickstats – Population by Collector Districts /Township Clusters	46
Reference Documents	47

Introduction

Legislative Requirements

The Local Government (General) Amendment (Community and Social Plans) Regulation 1999 requires that Councils develop a social or community plan in accordance with departmental guidelines and report on identified access and equity activities in their annual reports.

The plan must include general community demographic data and specific data and information about the needs of particular target groups, as well as the broader community.

The mandatory target groups include

- Children
- Young People
- Aboriginal and Torres Strait Islanders
- Older People
- Women
- People from Culturally and Linguistically Diverse backgrounds (CALD)
- People with Disabilities

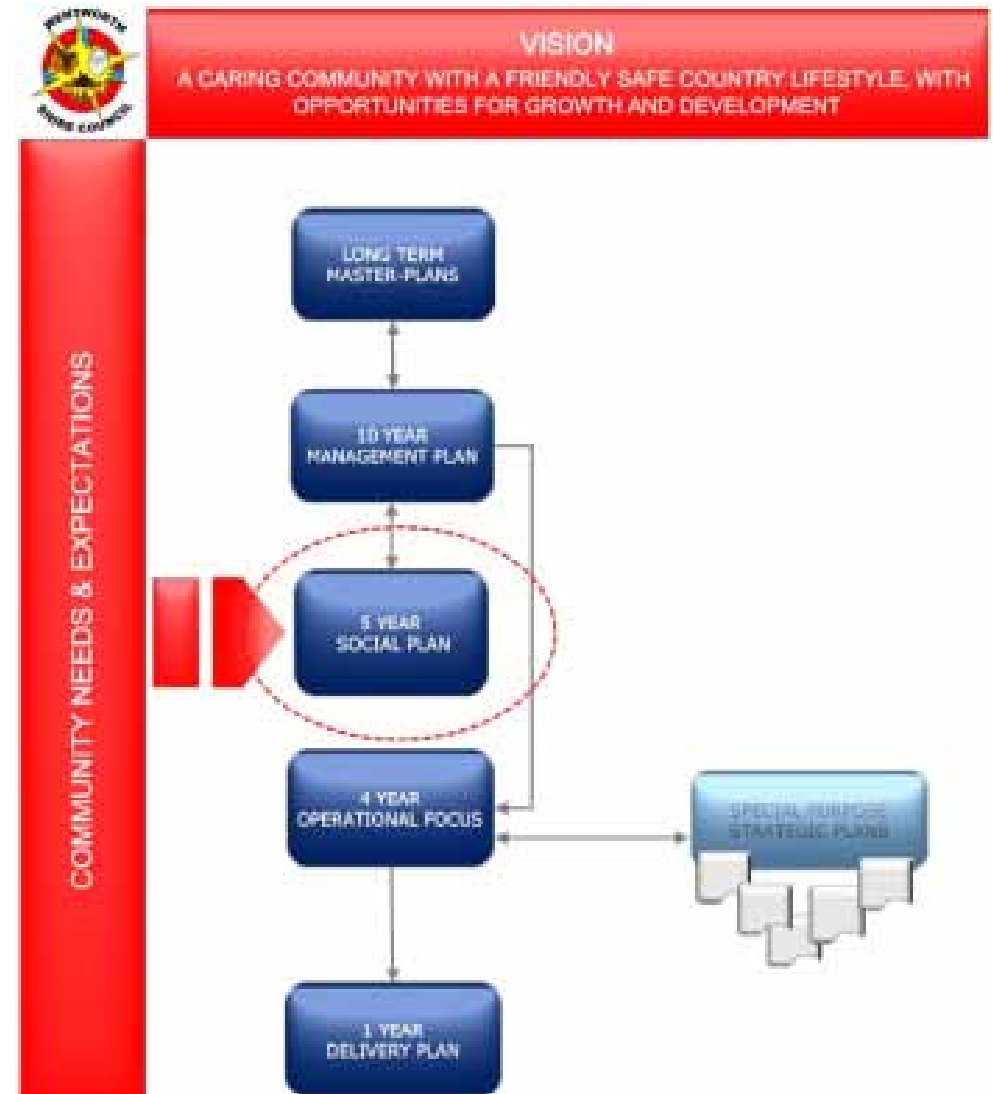
Objectives

The objectives of this plan are to

- comply with the requirements of the Local Government (General) Amendment (Community and Social Plans) Regulation 1999.
- identify planning and community strategies and actions.

Monitoring and Reporting

The key outcomes set out in this plan are to be integrated into the Shire's Management and Operational Plans and monitored, evaluated and reported upon within any review of these plans and recorded in the Wentworth Shire's Annual Report.



Scope and Purpose

This Social Plan seeks to identify the needs of the communities and specified target groups within the Wentworth Shire.

The plan will provide recommended actions whereby these needs can be met, based on the

- promotion of fairness in the distribution and allocation of resources, with particular focus on those in most need;
- recognition and promotion of peoples' rights and improvement in the accountability of decision makers;
- provision of better opportunities for people to participate and engage in consultation about decisions which affect their lives

to ensure that the people have fair access to economic resources and services which are essential to meeting their basic needs and which will improve their quality of life.

Methodology

The following process has been used in the preparation of this Plan:

- Review the 2004-2009 Social Plan
- Review current Social Plans from Broken Hill and Balranald Shires and Mildura Rural City Council
- Review existing Shire data on client satisfaction with existing services ('My Thoughts' community comment submissions from early 2007 to January 2009)
- Conduct eight Community Meetings/Public Forums
- Consult individually with key stakeholders, community groups and community leaders
- Undertake a Community Survey to gain data on client needs and wants for new services – online and paper-based
- Update Council's Community Directory
- Undertake a detailed examination of Australian Bureau of Statistics Census Data to identify the characteristics of each

township/community cluster and population target group and any emerging trends

- Determine a set of needs assessments of the key target groups, and for each township and associated communities
- Prepare a set of strategies and implementation actions/projects for groups of services and key communities
- Integrate Action Plans and proposed projects into Council's ten year management plan.

Mission and Values – Wentworth Shire Council's Mission

“To represent and assist the community and the stakeholders of the Wentworth Shire in meeting their needs at an affordable cost.”

Core Values

- Objective, consultative and accountable decision making
- Focus on excellent customer service
- Sustainability as a guiding principle
- Our diverse communities
- Responsiveness to community needs
- Open, fair and practical business relationships
- Cost effective and commercially competitive service delivery
- Continuous improvement and best value in everything we do
- A learning and innovative environment
- Safe and clean environment
- Positive balanced economic, social and environmental outcomes

Supporting values

- | | |
|---------------------------|----------------------|
| • Honesty | • Recognition |
| • Integrity | • Respect |
| • Effective Communication | • Consistency |
| • Leadership | • Teamwork |
| • High performance | • Strategic planning |

Executive Summary

The Social Plan suggests that six specific strategies falling under the following broad titles of

- 1. Communication**
- 2. Safer Communities**
- 3. Recreation and Culture**
- 4. Economic Development and Sustainability**
- 5. Conservation and Protection of the Environment**
- 6. Transport**

be developed to plan the way the Shire can move forward to address the most important and common needs within the Shire's townships. The order of the strategies indicates a general level of importance of each strategy with Communication being the top priority.

Individual actions within these strategies often have differing timeframes for implementation and differ in the linkages to other community groups with potential to be involved in the suggested actions.

The Social Plan outlines the primary needs identified for each of the seven mandatory target groups

- 1. Children**
- 2. Young People**
- 3. Aboriginal and Torres Strait Islanders**
- 4. Older People**
- 5. Women**
- 6. People from Culturally and Linguistically Diverse Backgrounds**
- 7. People with Disabilities**

and indicates possible actions and timeframes for addressing these needs. There is a high degree of commonality in the needs and thus the suggested actions to address them. Some of the needs of these target groups will be considered within the six (6) primary strategies mentioned above.

The Wentworth Shire – Council Actions (now linked to Council Management Plan Initiatives) are shown in all strategies, but most strategies require a combination of collaborative actions by

- Government and non-government community health, welfare, family intervention and social support service providers
- Government and non-government providers of education, training and employment services
- NSW Departments of Justice and Police
- A range of community organisations (including sporting, special interest and service clubs)
- Private business and developers

and importantly, funding, via Commonwealth and State government initiatives.

The role of the Wentworth Shire is to provide community leadership by

- developing specific Council strategies,
- encouraging and supporting the initiatives of other community organisations
- advocating for the provision of service

to ensure the best outcomes for the people of the Shire.

Demographic Profile - Wentworth Shire

The following profile of the Wentworth Shire's population by Age, Gender and Ethnicity is based on data from the ABS 2006 Census for the Wentworth (A) SLA 155208200 (whole of Shire) and ABS T01 Selected Person Characteristics for Time Series based on place of enumeration.

Age, Gender and Ethnicity

	Males	Females	Persons
0-4 years	229	201	430
5-14 years	518	491	1009
15-19 years	251	220	471
20 -24 years	157	155	312
25-34 years	432	368	800
35-44 years	487	453	940
45-54 years	574	518	1092
55-64 years	532	443	975
65-74 years	337	267	604
75-84 years	168	172	340
85 years and over	37	69	106
Total Persons	3721	3358	7079
Indigenous Persons	299	319	618 (9%)
Born in Australia	3207	2921	6128 (87%)
Born Overseas	221	196	419(6%)
English Spoken At Home	3377	3080	6457 (91%)

**total indigenous persons included in total persons and age ranges*

- Non indigenous males outnumber females in all age groups under 75 years of age
- 27% of the total population is under 20 years of age
- 45% of the total population is over 45 years of age
- 6.3% of the total population are aged 75 years +
- Indigenous people are now 9% of the Shire Total Population*
- Indigenous females outnumber indigenous males
- Australian-born residents account for 86% of the population**
- English is spoken in 91% of Shire Households**

The following averages and medians compare selected topics for the population of the Wentworth Shire and Australia and are sourced from ABS 2006 Selected Averages and Medians for Time Series based on place of enumeration, Community Profile Series Expanded Community Profile (Wentworth SLA 155208200 and Census of Population and Housing)

Selected Medians

	Wentworth Shire	Australia
Median Age	40	36.6
Mean Household Size	2.6	2.6
Median Weekly Household Income	\$775	\$1027
Median Monthly Housing Loan Repayment	\$900	\$1300
Median Weekly Rent	\$105	\$190
Dwellings fully Owned*	975(37%)	35%
Dwellings being purchased*	809 (31%)	35%
Dwellings being rented*	666(25%)	29%
Lone person households	585 (24%)	9.6%
Lone Parent household	265 (11%)	4.5%
Household Internet connections	1442 (54%)	64%
Post secondary qualification	1606 (23%)	32%
Employed Full-time	2114	
Employed Part-time	1031	
Looking For Work	171	4.8%

**7% discrepancy as some tenure types not stated/unknown*

In the Wentworth Shire

- Median Weekly Household Incomes and Monthly Home Loan repayment rates are approximately 70% of the national average
- 54% of households in the Wentworth Shire have an internet connection – 10% below national average

Demographic Change – Wentworth Shire

Resident Population Growth Rate

Wentworth (A)

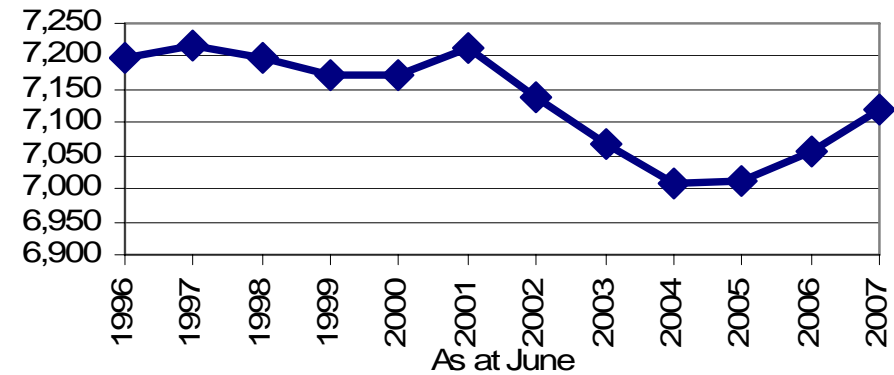
The following data table and graphs have been taken from NSW Department of Planning Demographic Profile, Wentworth (A) with original data sourced from the ABS Regional Population Growth, 1996 to 2006.

Estimated Resident Population, Wentworth (A)

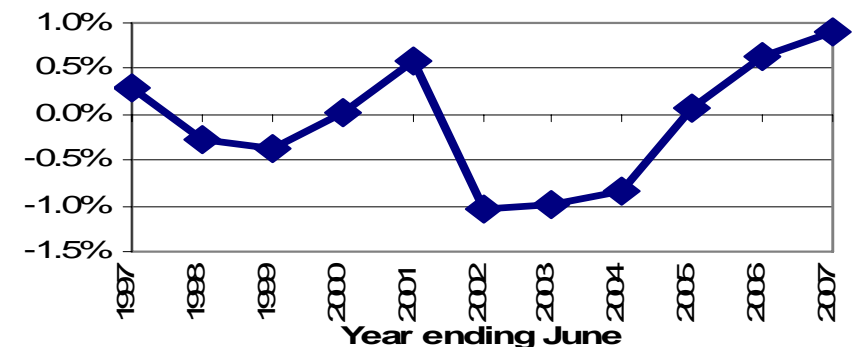
Year ending June	Estimated resident population	Annual increase	Growth rate
1996	7,197		
1997	7,217	20	0.3%
1998	7,198	-19	-0.3%
1999	7,172	-26	-0.4%
2000	7,173	1	0.0%
2001	7,214	41	0.6%
2002	7,139	-75	-1.0%
2003	7,069	-70	-1.0%
2004	7,009	-60	-0.8%
2005	7,013	4	0.1%
2006	7,058	45	0.6%
2007	7,121	63	0.9%
Average 1996-2001		3	0.0%
Average 2001-2006		-31	-0.4%
NSW growth rate 1996-2001			1.2%
NSW growth rate 2001-2006			0.7%

After a period of three years (2002-2004) in which a decline in population occurred, Wentworth Shire has seen modest population growth during the last three years (2005-2008).

Estimated resident population, Wentworth (A), 1996 to 2007



Annual Population Growth Rate -Wentworth (A) 1996-97 to 2006-07



Components of Population Growth

The following data and tables have been taken from NSW Department of Planning Demographic Profile, Wentworth (A) with original data sourced from the ABS Regional Population Growth, 1996 to 2006.

Component	1996-2001	2001-2006
Births	474	438
Deaths	288	225
Natural increase	186	213
Net migration	-169	-369
Total increase	17	-156

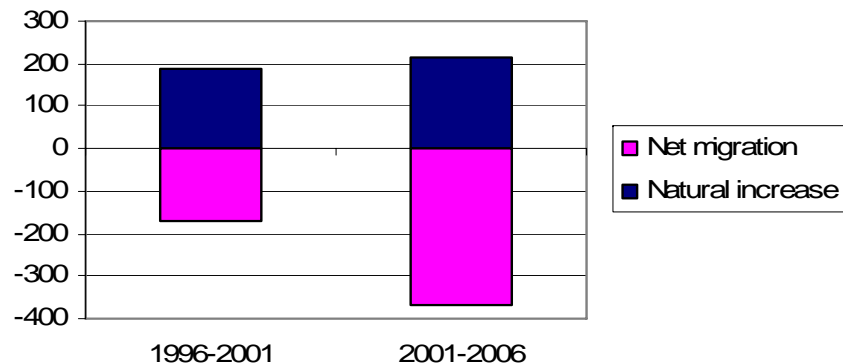
	Growth		% Growth	
	1996-01	2001-06	1996-01	2001-06
Indigenous	-274	73	-33.5%	13.4%
Non-indigenous	-211	45	-3.4%	0.7%
Not stated	214	-44	127.4%	-11.5%
Total population	-271	74	-3.7%	1.1%

* higher than usual number of indigenous persons was recorded in 1996 Census has remained unexplained



(Perry Sand Hills Concert – March 2009)

**Components of population growth,
Wentworth (A), 1996-2001 and 2001-2006**



Employment

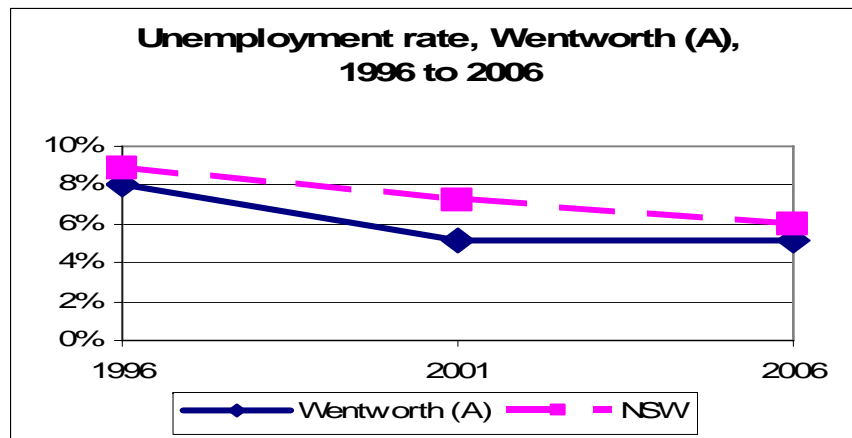
Labour Force Status

Wentworth (A), 1996, 2001, 2006

The following data table and graphs have been taken from NSW Department of Planning Demographic Profile, Wentworth (A) with original data sourced from the ABS Times Series Profile 2006-2007.

Labour force status, Wentworth (A), 1996, 2001, 2006

Labour Force Status	1996	2001	2006
Employed	3046	3054	3145
Unemployed	267	166	171
Total labour force	3313	3220	3316
Not in labour force	2042	1920	1910
Not stated	164	332	384
Persons age 15+	5519	5472	5610
Unemployment rate	8.1%	5.2%	5.2%
Participation rate	61.9%	62.6%	63.5%
NSW unemployment rate	8.8%	7.2%	5.9%
NSW participation rate	61.1%	62.2%	63.2%



The unemployment rate in the Wentworth Shire has been below that of NSW and participation rate has been slightly higher than the rest of the state. (CDEP participants are classified as 'employed' in ABS data)

Major Industries of Employment

Wentworth (A), 1996, 2001, 2006

The following data table and graphs have been taken from NSW Department of Planning Demographic Profile, Wentworth (A) with original data sourced from the ABS Times Series Profile 2006-2007

Major industries of employment (employed residents), Wentworth (A), 1996, 2001, 2006

Industry major group	Employed persons			% of Total			NSW
	1996	2001	2006	1996	2001	2006	
Agriculture\ forestry & fishing	1,116	960	763	38.3%	32.1%	25.1%	2.8%
Retail trade	213	232	260	7.3%	7.8%	8.5%	11.4%
Manufacturing	117	230	228	4.0%	7.7%	7.5%	9.8%
Accommodation & food services	244	223	228	8.4%	7.5%	7.5%	6.7%
Health care & social assistance	167	197	224	5.7%	6.6%	7.4%	10.8%
Construction	91	157	216	3.1%	5.2%	7.1%	7.5%
Education & training	154	184	205	5.3%	6.1%	6.7%	7.8%
Public administration & safety	151	135	142	5.2%	4.5%	4.7%	6.2%
Transport\ postal & warehousing	86	104	130	2.9%	3.5%	4.3%	5.1%
Wholesale trade	236	175	129	8.1%	5.8%	4.2%	4.8%
Other industries	342	396	519	11.7%	13.2%	17.0%	27.1%
Total stated industry	2,917	2,993	3,044	100.0%	100.0%	100.0%	100.0%
Inadequately described / Not stated	123	55	103				
Total employed persons	3,040	3,048	3,147				

Steady increases have occurred in the numbers of residents employed in most industry categories notably

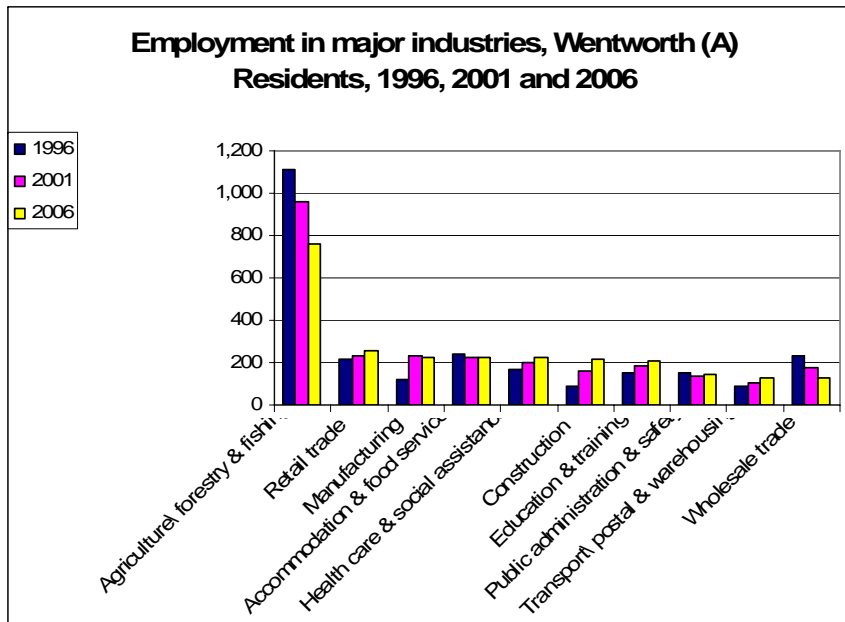
- manufacturing
- construction
- health care and social assistance
- transport postal and warehousing
- education and training

And an emerging 'other industries category' which may reflect the number of residents working in alternative service industries, some from home.

While decreases have occurred in the numbers of residents employed in

- agriculture, forestry, fishing
- wholesale trade
- public administration and safety.

(CDEP participants are classified as 'employed' in ABS data).



(Council Employees – April 2009)

Townships and Population Clusters

Wentworth

Wentworth is located in the south-central part of the Shire, at the junction of the Murray and Darling Rivers and is the traditional administrative and historic centre for the Shire.

The Wentworth Shire's Council Chambers, main office and works depot, library, town hall complex, show grounds and several community meeting rooms and only accredited Visitor Information Centre are situated in Wentworth.

The Shire's only Hospital and Ambulance service, and community operated Residential Aged Care facility are situated within the township.

A privately owned medical practice is situated in the township.

For the purposes of this report the villages of Pomona, Curlwaa, Darling View and Anabranck are included in these figures

Total Persons	Male	Female	Total	Indigenous
	1249	1105	2354	166 (7%)

- 113 (5)% are under 5 years of age
- 294 (13%) are aged 5-14 years of age
- 245 (10%) are aged 15-24 years of age
- 844 (36%) are aged 25-54 years of age
- 325 (14%) are aged 55 -64 years of age
- 403 (17%) are aged over 65 years

Source ABS 2006 Census Quickstats by Collector District (1020702 to 1020706 and 1020712)

Overall population by township/district by ABS Collector Districts 1020701 – 1020706 and 1020712 for Wentworth and villages shows

- Wentworth's population has decreased overall by approximately 15% in the period 1996 to 2006 (9% in the period 2001-2006)



(Great Wentworth Tractor Rally Muster, Darling Street – July 2006)

Dareton

Dareton is located 22kms from Wentworth on the Murray River and is the centre of the Coomealla Irrigation District.

The Namatjira Aboriginal Settlement is situated within 2 kilometres of the township.

Government agencies and contractors, including the region's major health service, regional headquarters for emergency services and NSW Police, specialist indigenous and family services are clustered within the township. Government and private community agricultural and citrus research stations are also based within the district.

A Wentworth Shire library branch and meeting room are situated in the township, along with a Shire secondary works depot.

The Shire's only high school and TAFE campus are on the outskirts of town between the Dareton township and Namatjira Aboriginal Settlement.

For the purposes of this report the wider area of Coomealla east and west and the Namatjira Settlement are included in these figures

Total Persons	Male	Female	Total	Indigenous
	593	616	1204	332 (28%)

Of the non-indigenous population

- 95 (8%) are under 5 years of age
- 190 (16%) are aged 5-14 years of age
- 147 (12%) are aged 15-24 years of age
- 460(38%) are aged 25-54 years of age
- 159 (13%) are aged 55 -64 years of age
- 153 (13%) are aged over 65 years

Source ABS 2006 Census Quickstats by Collector District (1020707 to 1020709 and 1020713).

Overall population by township/district by ABS Collector Districts (1020707 – 1020709 and 1020713) for Dareton and villages shows

- *Dareton's population decreased overall by approximately 30% in the period 1996 to 2006, but *increased* by 11% in the period 2001-2006

** higher than usual number of indigenous persons was recorded in 1996 Census has remained unexplained*



(Mural Dareton – April 2009)

Buronga and Gol Gol

Buronga and Gol Gol communities are located at the central, southern end of the Shire on the banks of the Murray River immediately across the river from, and linked by a major highway bridge to, the major Victorian Regional City of Mildura less than 2 kilometres away.

Wentworth Shire has a library and major community centre (Midway Community Centre) situated within these two communities and a cluster of sporting clubs is based at Alcheringa Sporting Complex.

Plans for substantial development and expansion of this community and associated shopping and service precinct are awaiting State-level planning approval.

The villages of Trentham Cliffs, Mourquong and Boeill Creek are included in these figures

Total Persons	Male	Female	Total	Indigenous
	1492	1391	2883	99 (3%)

- 211(7%) are under 5 years of age
- 474(16%) are aged 5-14 years of age
- 327(11%) are aged 15-24 years of age
- 1208(42%) are aged 25-54 years of age
- 347(12%) are aged 55 -64 years of age
- 315(11%) are aged over 65 years

Source ABS 2006 Census Quickstats by Collector District (1020710, 1020711, 1020801, 1020804-5)

Overall population by township/district by ABS Collector Districts 1020710 – 1020711 and 1020801, 1020804-5 for Buronga, Gol Gol and villages shows

- Buronga and Gol Gol's population has increased overall by approximately 15% in the period 1996 to 2006 (10% in the period 2001-2006)



(Opening of Alcheringa Pavilion 2008)

Pooncarie and Ellerslie

Pooncarie is a remote township on the Darling River, located in the central part of the Shire, 124 kilometres from Wentworth and provides services for dryland farming and mining industries.

Wentworth Shire has an outside worker based in this community and provides library services via the post office.

The village of Ellerslie/Palinyewah (37) kilometres from Wentworth on the Pooncarie Road) is included in these figures

Total Persons	Male	Female	Total	Indigenous
	196	146	342	10 (3%)

- 14 (4%) are under 5 years of age
- 54 (16%) are aged 5-14 years of age
- 28 (8%) are aged 15-24 years of age
- 151 (44%) are aged 25-54 years of age
- 54 (16%) are aged 55 -64 years of age
- 44 (13%) are aged over 65 years

Source ABS 2006 Census Quickstats by Collector District (1020802 and 1020803)

Overall population by township/district by ABS Collector Districts 1020802-3 for Pooncarie and Ellerslie shows

- Pooncarie's population decreased by approximately 33% in the period 1996 to 2006 (same decrease was experienced in 2001-2006)



(Pooncarie Weir)

Target Group Profiles

Children

Children are classified as those aged 0 to 14 years (*ABS Classification*). In 2006:-

- 1445 children were living in the Shire representing 20% of the total population*
- just over half of these children were male - 52%
- 15.6% (227) children were identified as Indigenous
- 30% (433) of children were under 5 years of age

There are 269 lone parent families in the Shire, with 29 of these lone parents aged less than 25 years.

Township	Under 14 years	% of population in each community
Wentworth	407	18%
Dareton	285	24%
Buronga and Gol Gol	685	24%
Pooncarie	68	20%

* Detailed breakdown for 135 persons in ABS Collector Districts Anabran north /south is not available and is excluded from the age ranges.

Identified Needs

- Child protection
- Family intervention and support services
- Access to appropriate health services for early childhood development
- Access to appropriate, secure accommodation
- Pre-school education, and literacy development support
- Access to childcare and respite services
- Recreation, sport and development programs



(Wentworth Library – National Simultaneous Story Time 2007)

Young People

Young People (Youth) are classified as those aged 15 to 24 years (*ABS Classification*) in 2006

- 747 young people were living in the Shire in 2006 representing 11% of the total population*
- just over half of young people were male – 51.5%
- 15% (115) young people were identified as indigenous
- 12 young women aged 15-19 years had given birth to at least one child
- 399 (53%) of young people were participating in the workforce
- 181 (45%) of those in the workforce were working part-time
- 57 (26%) of young people (aged over 15 years and identified as in the labour force) are unemployed and looking for work

Township	15-24 years	% of population in each community
Wentworth	245	11%
Dareton	147	12%
Buronga Gol Gol	327	11%
Pooncarie	28	8%

* Detailed breakdown for 135 persons in ABS Collector Districts Anabranh north /south is not available and is excluded from the age ranges.

Identified Needs

- Access to appropriate, secure accommodation
- Personal, home and community safety and security
- Access to appropriate health services, including general, dental, sexual, drug and mental health information and support
- Access to educational support outside of school
- Access to preparatory and industry specific training and employment support and small business creation services
- Public and alternative transport options – after hours
- Crime diversionary and juvenile justice programs

- Access to community and service information
- Participation in society planning and decision making
- Recreation, sport and development programs (including leadership)
- Access to appropriate legal advisory and support services



(Youth Week – Perry Sandhills)

Overview Children and Young People

The definitions and classifications of children and young people vary from state to state, between government departments and service providers. The needs of these two target groups overlap significantly and it is therefore pertinent to consider a combined overview of the two classifications.

Within the Wentworth Shire

- Children and young people represent 31% (2192) of the total population
- 16% (342) of young people identified as Indigenous

Township	Under 24 years	% of population in each community
Wentworth	652	29%
Buronga Gol Gol	1012	36%
Dareton	432	34%
Pooncarie	96	28%

Identified Needs

- Child protection
- Family intervention and support services
- Access to appropriate health services, including general, maternal, early childhood development, dental, sexual, drug and mental health information and support
- Access to appropriate, secure accommodation
- Pre-school education, and literacy development support
- Access to childcare and respite services
- Recreation, sport and development programs
- Access to appropriate, secure accommodation
- Personal, home and community safety and security
- Access to appropriate health services, including general, dental, sexual, drug and mental health information and support

- Access to educational support outside of school
- Access to preparatory and industry specific training and employment support and small business creation services
- Public and alternative transport options – after hours
- Crime diversionary and juvenile justice programs
- Access to community and service information
- Participation in society planning and decision making
- Recreation, sport and development programs (including leadership)
- Access to appropriate legal advisory and support services



(Gol Gol Fair)

Aboriginal and Torres Strait Islanders

In 2006, 618 indigenous people were living in the Wentworth Shire representing 9% of the total population. Of these

- 315 (51%) live in Dareton and the nearby Namatjira Aboriginal Settlement
- 203 (36%) of the total population of Dareton Township are indigenous
- 332 (28%) of the total population of Dareton and the surrounding Coomealla Irrigation district are indigenous
- 166 (7%) of indigenous persons live in Wentworth and surrounding districts.

Age Range Years	Number Indigenous Persons	Percentage of total Indigenous Population
0-4	70	11%
5-14	156	26%
15-24	112	18%
25-44	165	27%
45-64	85	14%
65+	23	4%

Source ABS 2006 Census of Population and Housing Wentworth (A) LGA 18200 (I01) Indigenous Profile

Significantly

- 226 -37% of the indigenous population is aged under 15 years
- 338 - 55% of the indigenous population is aged under 25 years
- 403 – 82% of the indigenous population is aged under 44 years
- 147 – 18% of the indigenous population is aged over 45 years

Indigenous population, Wentworth (A), 1996, 2001, 2006

The following data table has been taken from NSW Department of Planning Demographic Profile, Wentworth (A) with original data sourced from the Australian Bureau of Statistics 2007, 2006 Census, Time Series Profile.

	Population			% of total		
	*1996	2001	2006	1996	2001	2006
Indigenous	819	545	618	11.3%	7.8%	8.8%
Non-indigenous	6,257	6,046	6,091	86.4%	86.7%	86.4%
Not stated	168	382	338	2.3%	5.5%	4.8%
Total population	7,244	6,973	7,047	100.0%	100.0%	100.0%

* higher than usual number of indigenous persons was recorded in 1996 Census has remained unexplained

Indigenous persons have

- an unemployment rate of 37% compared to 4% in the non-indigenous population (number of unemployed people expressed as a percentage of the total labour force)
- a labour force participation rate of 33% compared to 65% for the non-indigenous population (expressed as number of persons in the labour force as a percentage of total persons aged 15years and over)
- 80 (63% of indigenous labour force) are employed (this figure is inclusive of Community Development Employment Projects (CDEP))
- non-school qualification rate of 6% in comparison to 23% of the non-indigenous population

Selected Medians	Indigenous persons or households with Indigenous Persons	Non-indigenous persons/other Households
Median Age of Persons	21	41
Median Individual Income (wkly)	\$217	\$407
Median Household Income (wkly)	\$572	\$824
Median Weekly Rent	\$105	\$110
Median Housing Loan Repayment (monthly)	\$650	\$910
Average Household size	3.5	2.5
Household Internet Connection	11%	53%

ABS 2006 Census of Population and Housing Wentworth (a) LGA 18200 I04
Selected Medians and Averages by Indigenous Status

Identified Needs

- Housing and community infrastructure
- Family intervention and child support services
- Access to appropriate health services, including general, maternal, early childhood development, dental, sexual, drug and mental health information and support
- Supported education, training, employment and small business development programs
- Crime diversionary programs and alternative justice systems
- Access to public and /or alternative transport
- Child protection and appropriate support and education
- Access to general community and service information
- Access to appropriate legal advisory and support services
- Community safety and strengthening initiatives
- Develop leadership within the community
- Participation in community planning and decision making
- Promotion, recognition, support and respect for Aboriginal cultural heritage



(Mural Artists – Dareton – April 2009)

Older People

This group is defined as indigenous people aged over 45 years and non-indigenous people over 65 years of age

In 2006, a total of 1067 older people lived in the Wentworth Shire. Of these

- 958 were non-indigenous people aged over 65 years, and 52% were male
- 109 were indigenous people over 45 years of age, 52% were male
- only 23 indigenous people were aged 65 years or over
- 403 (38%) lived in the township of Wentworth
- 315 (30%) lived in the townships of Buronga and Gol Gol
- 153(14%) lived in the township of Dareton

Older people comprised

- 14% of the total non-indigenous population
- 18% of the total indigenous population (those aged 65+ comprised less than 4% of the total indigenous population).

Location	65 years +	% of Population in each community
Wentworth	403	18%
Buronga Gol Gol	315	11%
Dareton	153	13%
Pooncarie	44	13%

As within the rest of NSW, the proportion of older people in the Wentworth Shire is growing rapidly. There is some evidence of some population migration of older people from the Wentworth Shire to Mildura (or other larger regional centres) to improve access to transport, medical and supported accommodation.

Identified Needs

- Security in the home and community
- Appropriate and affordable housing, including – low, respite

and high care accommodation

- Access to community and service information
- Access to public, commercial and historic buildings
- Participation in social planning and decision making
- Access to public transport and/or alternative transport
- Access to appropriate health and information services
- Access to age-appropriate recreational and wellbeing activities



(Great Wentworth Tractor Rally – 2006)

Women

Women are defined as *females aged over 18 years*.

In 2006, a total of 2383 women lived in the Wentworth Shire. Of these

- 107 (4%) were indigenous
- 807 (34%) were under 40 years of age
- 1108 (46%) were aged over 50
- 456 (19%) were aged over 65

Identified Needs

- Protection from domestic violence
- Access to appropriate legal and advisory services
- Access to appropriate housing and accommodation (including emergency accommodation)
- Child protection and appropriate support/education
- Access to appropriate health, wellbeing and maternal care services
- Access to adequate childcare and support services
- Access to Public and/or alternative transport
- Access to preparatory, industry specific training and employment support, and small business creation services
- Community safety and strengthening initiatives
- Develop leadership within the community
- Participation in community planning, information sharing and decision making



(Councillors Marg Thomson, Mayor and Susan Nichols)

People from Culturally and Linguistically Diverse Backgrounds (CALD)

From the ABS 2006 Census data

- 368 (5%) persons indicated that they were born overseas
- 229 (4%) persons indicated that they spoke a language other than English at home
- 6248 (92%) persons indicated that they spoke English at Home

and over 97% of people living within the Wentworth Shire indicated that they spoke only English or spoke English very well or well.

ABS 2006 Census of Population and Housing – for Wentworth (A) LGA shows that the most common countries of birth stated for mature (over 25 years of age) persons living in the Shire are

- United Kingdom
- Italy
- New Zealand
- Netherlands and Thailand

But younger immigrants (under 25 years) were born in

- India
- Germany
- and South Africa.

Italian was the most common language other than English spoken at home. An ethnic-specific aged care service is being developed in Mildura to address the specific needs of the ageing immigrants, but likely long term Australian residents from Western Europe.

No specific needs for this target group emerged during the community consultations.

In line with the Principles of Multiculturalism, the three key result areas for this target group to be considered, monitored and evaluated are

- social justice

- community harmony
- economic and cultural opportunities

Identified Needs

- Access to general community and service information
- Participation and inclusion in community planning and decision making
- Promotion of positive community attitudes to people from CALD backgrounds

People with Disabilities

Limited Numbers of people living with a disability (defined by ABS need for assistance in one or more core activities of self care, mobility and communication because of disability) were identified as living in the Wentworth Shire during the ABS 2006 Census.

- 286 (4%) people indicated a need for assistance with slightly more males than females indicated in this category
- 155 (54%) of people indicating a need for assistance were aged 65 years+

Identified Needs

- Disabled access to public, commercial and historic buildings
- Promote positive attitudes to the needs of people living with a disability amongst the community
- Provide adequate information to those living with a disability about the accessibility of services
- Access to appropriate health and information services

Generic Issues

Impact of Drought

This region of NSW has been in drought for a period of some 10 years (Exceptional Circumstances extended until 2010).

The economic impacts of the drought include

- economic loss due to crop failure
- reduced value of production
- reduced employment levels
- reduction in household incomes and discretionary spending in local communities

and have flowed on into the social wellbeing of the community with

- increased levels of social distress
- increase in the incidence of mental health and personal wellbeing concerns
- increase in marital dispute and breakdown

All of those issues are reflected in an upward trend in client data for the Sunraysia Financial Counselling Services and Mallee General Division of General Practice referral to private sector counselling services.

Economic Development and Sustainability of Township Services

The effects of drought and the current economic climate on the sustainability of services in small townships, emerged in community consultations as follows

- Wentworth – the loss of full-time doctor approximately 2 years ago has shifted some associated expenditure away from town. Several changes have occurred in the owners and operators of local tourism and hospitality businesses in the past 12 months
- Dareton – loss of part-time doctor and pending sale of town's supermarket/service station
- Pooncarie – closure of fuel sales and pending sale of general store.

Rates of Crime

The Wentworth Shire features in the top five of crime statistics in the following offence categories

- Steal from dwelling – Ranking 3
- Assault - Domestic Violence – Ranking 4

and ranks 34 in Assault – Non-Domestic Violence related, in NSW for the period January to December 2007.

The Bureau of Crime Statistics and Research NSW data on crime trends within the Wentworth Shire show a stable trend in the 17 major offences tracked over a 10, 4 and 2 year period to September 2008, with the exception of the following offences

- Break and Enter - Dwelling – trend is up 5% (average annual percentage change) in the past 2 years
- Break and Enter – Non Dwelling – trend is up over last 10 years (% year annual trend is low)
- Steal from Motor Vehicle – 10 year trend is down by almost 4% (average annual percentage change)
- Assault – Non –Domestic Violence – 10 year trend is down by 6% (average annual percentage change)

Perceived increases in vandalism, graffiti (malicious damage) and young people loitering in the communities of Wentworth and Dareton have been raised in consultations, although offence rates remain stable over the 10, 4 and 2 year periods to September 2008.

NSW Recoded Crime Statistics 2003-2007 indicate that most drug offences relate to the possession of cannabis (triple other drug related offences) and while exceeding prescribed content of alcohol limit features in the top 6 driving offences, most relate to other regulatory offences.

NSW Statistical Trends (ABS Catalogue Number 1338.1.55.001) states that the age of the offender has a strong relationship to the likelihood of re-offending with

- 25% of persons aged 18-24 years reoffending compared with 14% of persons aged 45 years and over.

Reoffending was higher for both indigenous youth 76% and indigenous adults 53% than for all other offenders.

Volunteering and Unpaid Assistance

The Australian Bureau of Statistics introduced two new measures of social cohesion for the 2006 Census

- Volunteering
- unpaid assistance to those with a disability

with both indicating a level of care in the community.

The rate of volunteering in the Wentworth Shire is

- 22.% (1,197 persons)

but the rate of volunteering for indigenous persons is 8% with only 32 persons indicating that they participate in volunteering activities. The rate of volunteering in Mildura is 20%, and 37% in the NSW in the area outside of Sydney (where the volunteering rate is 30% - same as Melbourne).

The rate at which unpaid assistance is given to those living with a disability is

- 11% (603 persons) for the non-indigenous population

but a slightly higher rate of 15% (57 persons) for indigenous persons.

Both rates are consistent with those of Mildura.

Library Visits and Membership

With an average of 40% of Australians (aged 15 to 74 years) visiting a library at least once a year, libraries are the second most attended cultural venue (second only to the cinema).

Statistical information collated by the Wentworth Library Service for the 5 year period 2003- 2008 shows

- Library Membership is up by 23%
- Visits to the library are up by 11%
- Library loans are down by 28%

Wentworth's libraries received over 20,000 visitors in the 2008 year, the average visiting rate per capita was close to 3, which is well below Victoria's state average of 6.8 (2006- 2007, Mildura Rural City Council Library Services 2008) and NSW state average of 5.1 in 2006-2007 (NSW Public Library Statistics 2006/2007).



(Buronga Library)

Identified Needs and Strategies

The following section of this document outlines both common and specific needs by township cluster and target groups. These needs were identified during community consultations, individual stakeholder meetings, resident comments in an online community survey, resident 'My Thoughts' comments (from early 2007 to 2008) and those that emerge from the ABS data presented.

The needs by Township Cluster are outlined in a

- **Table of Needs Common to each Township Cluster (Whole of Shire - Community Need)** and those needs identified as specific to each township.

Six specific strategies have been suggested to address the needs common to the townships as follows.

1. **Communication**
2. **Safer Communities**
3. **Recreation and Culture**
4. **Economic Sustainability**
5. **Protection of the Environment**
6. **Transport**

and these are outlined in tables with supporting actions, community linkages and suggested timeframes for action.

The needs identified for each mandatory target group are then overviewed in a

- **Table of Identified Needs – By Target Group**

followed by a detailed breakdown of needs, supporting actions, linked community organisations and general timeframes for action.

The seven mandatory target groups addressed are

1. **Children**
2. **Young People**
3. **Aboriginal and Torres Strait Islanders**
4. **Older People**
5. **Women**
6. **People from Culturally and Linguistically Diverse Backgrounds**
7. **People with Disabilities.**

The Wentworth Shire actions are shown in all strategies, but most strategies require a combination of actions by

- Government and non-government community health, welfare, family intervention and social support service providers
- Government and non-government providers of education, training and employment services
- NSW Departments of Justice and NSW Police
- A range of community organisations (including sporting, special interest and service clubs)
- Private business and developers

and importantly funding via Commonwealth and State government initiatives.

The role of the Wentworth Shire is often to provide community leadership by

- developing specific Council strategies,
- encouraging and supporting the initiatives of other community organisations
- advocating for the provision of service

to ensure the best outcomes for the people of the Shire.

Identified Needs – By Township Community Cluster

Community	Needs Common to two or more Communities	Needs specific to Community
Wentworth	<ul style="list-style-type: none"> • Communication and information sharing • Youth activities – recreational and developmental, including after hours activities • Development of community cultural, social and recreational activities/facilities • Support for economic and tourism development • Improved safety/security and crime prevention • Improve environment – implement recycling • Extend Public Transport –after hours • Improve general amenity and gateways to township 	<ul style="list-style-type: none"> • Need to address disability access issues • New subdivision for housing • Access to medical service • Plan for use of vacant sites (former school and shop fronts) and need for further development of plan for showgrounds buildings
Buronga/ Gol Gol	<ul style="list-style-type: none"> • Communication and information sharing • Youth activities – recreational, sport and developmental options • Improve environment – implement recycling • Support for economic and tourism development • Improve general amenity and gateways to township • Development of community cultural, social and recreational activities/facilities • Develop recognition of township as gateway to Shire and Mungo/ Willandra Lakes tourist region 	<ul style="list-style-type: none"> • Need for local aged care facilities • Improve public access to the riverfront recreational areas • Development of community shopping precinct and enhanced use of existing facilities • Need for home delivery of postage • Develop footpaths and share-ways to community facilities • Manage issues relating to traffic around Sturt Highway
Dareton	<ul style="list-style-type: none"> • Communication and information sharing • Youth activities – recreational and developmental including after hours activities • Development of community cultural, social and recreational activities/facilities • Support for economic and tourism development • Improved safety/security and crime prevention • Extend Public transport –after hours • Improve environment – implement recycling • Improve general amenity and gateways to township 	<ul style="list-style-type: none"> • Develop township identity and positive communication strategy • Housing and infrastructure maintenance • Enhanced education and employment opportunities for indigenous people, including small business development • Enhanced support services – health, legal, housing and social work support for indigenous women, children and young people (including those who are victims of domestic violence) • Facilitation of community leadership and participation
Pooncarie/Ellerslie	<ul style="list-style-type: none"> • Communication and information sharing • Support for economic and tourism development • Improve general amenity and gateway to township • Develop recognition of township as gateway to Shire and Mungo / Willandra Lakes tourist region 	<ul style="list-style-type: none"> • Extend bus service into township for high school students • Consolidation of community groups for management of town assets • Improvement to road maintenance and safety • Need for upgrade to community meeting facility

Community Need and Strategy 1 – Develop Communication Strategy

Communication and information sharing for purposes of

- informing community members of council, government and non-government agency services, processes, plans and resources
- maintaining community contacts and building relationships within the community
- recording and disseminating community information
- publicising local events/activities and celebrating community achievements
- establishing and maintaining a positive relationship with the local media
- providing tourism and visitor information

have been identified as needs in all four townships and as a priority issue for Young People, Aboriginal and Torres Strait Islanders, Older People and People with Disabilities.

Relevant findings from data collection and community consultations

- 54% of the Shire's households are connected to the internet
- respondents to the Shire online survey indicated that the most popular way to access community information was via the Shire Newsletter or NSW Standard, but each community differed significantly in their preferred way to receive and access information. Shire website has a 4% usage rate.

Council Actions – Sustainable Communities (Social) – Our People – Community Services	Linkages	Timeframe
Develop a communication strategy for the Shire and ensure access and equity issues are considered in dissemination of all information and co-ordination of community and Council consultations	Community Action Team, Community Working Party (Indigenous)	2009/2010
Develop Council's website to appropriate website user design standards and maintain currency of website information. Website structure to include online community services directory and information database, events calendar, community bulletin board, easy access to all Council forms, plans, service standards, codes of conduct etc	Community service providers and organisations	2009/2010
Provide opportunities for community members to have input into Council plans and decisions through public meeting forums, community consultation sessions and surveys (including on-line)		Ongoing
Promote Council website as primary source of Council and community information.		2009/2010
Promote positive community information and publicise community events and achievements	Dareton Community Action Team, Community Working Party (Indigenous) Pooncarie Progress and Development Association	2009/2010
Provide guidance to community members in the use and advantages of technology for information dissemination and gathering.	Wentworth Shire , Community Training, Education and Employment Providers	Ongoing
Continue to publish Shire Newsletter and provide information to all media outlets for publication		Ongoing
Provide timely feedback to all community enquiries in relation to Council decisions and actions		Ongoing
Investigate further use of technology for information dissemination, for example wireless hot spots for tourism information, document/process tracking for Council planning and other services	Wentworth Regional Tourism	2009/2010

Community Need and Strategy 2 – Develop Safe Communities Strategy

Community safety, security and crime minimisation with a particular emphasis on the issues of

- child protection
- persons loitering and creating public nuisance within townships
- increase (or perceived increase) in occurrence of vandalism and graffiti and steal from dwelling/retail premises
- increase in levels of crime against persons including domestic and other violence against persons

have been identified as needs in the three main townships and as priority issues for the target groups of young people, older people, indigenous people and women. Relevant findings from data collection and community consultations

- Persistent high level rankings/trends for Wentworth Shire in Assault – domestic violence and non-domestic violence and steal from dwelling/break and enter
- Resident concerns of increased numbers of people wandering the streets after hours and on weekends

Council Actions - Sustainable Communities (Social) – Our People – Safe Communities	Linkages	Timeframe
Maintain Council representation on Community Safety Precinct Committees, Juvenile Justice Area Working Party and other related groups	NSW Police, NSW Department of Justice	Ongoing
Encourage review and implementation of Crime Prevention Plan with all stakeholders	NSW Police, Neighbourhood Watch, Community Working Party (Indigenous), Community Action Teams, Community based legal services, Department of Justice	Ongoing
Support the provision of family education, support and intervention programs, including respite care for families at risk	NSW Police, Community Working Party (Indigenous), Community Action Teams, Community based family, health and legal services	Ongoing
Support the provision of after hours transport service (Night Patrol) which enables young people to return home or have a safe place overnight	NSW Police, Neighbourhood Watch, Community Working Party (Indigenous), Community Action Teams, Community based legal services, NSW Department of Justice, specialist community service providers	Ongoing
Advocate for the provision of diversionary programs/activities and alternative justice programs for specific target groups (youth and indigenous people) engaging in criminal activity or at risk of doing so	NSW Police, Department of Justice, Neighbourhood Watch, Community Working Party (Indigenous), Community Action Teams, Community based legal services, specialist community service providers	2009/2010
Advocate for the implementation of safe at home and safe in the community programs to enhance residents feelings of security and well-being	NSW Police, Neighbourhood Watch, Community Working Party (Indigenous), Community Action Teams, Community based legal services, Neighbourhood Watch, specialist community service providers	2009/2010
Support the development of community education, social support programs and facilities for victims and potential victims of crime	NSW Police, Neighbourhood Watch, Community Working Party (Indigenous), Community Action Teams, Community based legal services, specialist community service providers	Ongoing
Support the provision of education and support service for perpetrators of crime and those at risk	NSW Police, Neighbourhood Watch, Community Working Party (Indigenous), Community Action Teams, Community based legal services, specialist community service providers	Ongoing

Community Need and Strategy 3 – Develop Recreation and Culture Strategy

The development of community sport, recreation and cultural activities for the youth target group in particular, has an impact on the wellbeing for the individual, family and community by way of

- potential of diversion from other less socially acceptable activities and/or crime
- development of active lifestyle patterns and subsequent increased health benefits
- enhanced community contacts and social networks for support and guidance
- supporting the ongoing viability of sporting and other clubs activities

This issue has been raised in the 3 main townships and is a priority issue for the target group of young people and sub-set of indigenous youth in particular.

Council Actions - Sustainable Communities (Social) – Our People - Recreation and Culture	Linkages	Timeframe
Develop a master plan for Sport and Recreation (in consultation with each community).	Community Working Party (Indigenous), Community Action Teams, NSW Department of Justice, Indigenous Co-ordination Centre, specialist community service providers, community sporting clubs, NSW Department of Sport and Recreation, Mallee Sport Assembly (Mildura)	2010/2011
Encourage community organisations to seek funding opportunities for the provision of supervised activities for young people (including school holiday and after hours programs)	NSW Police, Neighbourhood Watch, Community Working Party (Indigenous), NSW Department of Justice, Indigenous Co-ordination Centre, Greater Western Health Services, Community Action Teams, Community based legal services, specialist community service providers	2010/2011
Support the volunteer and membership recruitment activities of local sporting groups.	Community Working Party (Indigenous), Community Action Teams, specialist community service providers, community sporting clubs, NSW Department of Sport and Recreation, Mallee Sport Assembly (Mildura)	2010/2011
Develop partnerships to provide accredited training for volunteer coaches, trainers and umpires across the range of sporting activities identified and prioritised in needs assessment	Community Working Party (Indigenous), Community Action Teams, specialist community service providers, community sporting clubs, NSW Department of Sport and Recreation, Mallee Sport Assembly (Mildura)	2010/2011
Encourage the development of Indigenous recreational and cultural programs.	Community Action Teams, Community Working Party (Indigenous) and Progress Associations, Indigenous Co-ordination Centre, Small Business and Tourism operators, Wentworth Regional Tourism Inc, NSW Department of State and Regional Development, Mildura Arts, West Darling Arts	2010/2011

Community Need and Strategy 4 – Develop Economic Development and Sustainability Strategy

The development and sustainability of townships is a major concern for Wentworth Shire residents with the following issues raised during consultations in all four townships

- employment opportunities
- individual and household income levels
- discretionary expenditure
- planning and development delays restricting housing development
- long term regional drought and water restrictions
- mechanisation and changes in agricultural practice
- township business and service delivery viability
- township population and demographic profile
- variability in market prices for agricultural produce
- threats to viability of large local employers
- small retail business and tourism planning and promotion
- identity and promotion of each township and linkages to major tourist attractions in the Shire

which have implications for the quality of life for all identified target groups.

Council Actions - Sustainable Communities – (Economy) – Growing Our Wealth – Sustainable Economic Development and Growth	Linkages	Timeframe
Liaise with funding providers for support for the development of community marketing plans	NSW Department of State and Regional Development , Community Action Teams and Pooncarie Progress and Development Association	2009/2010
Facilitate economic growth and small business development through engagement with local retailers, service providers and tourism operators.	Community Action Teams and Progress Associations, Small Business and Tourism operators, Wentworth Regional Tourism Inc, Employment and Training services providers, NSW Department of State and Regional Development	2009/2010
Facilitate shop and buy local campaigns	Community Action Teams and Progress Associations, Small Business and Tourism operators, Wentworth Regional Tourism Inc, NSW Department of State and Regional Development	2009/2010
Provide training in small business management, marketing and promotion for small business operators	Community Action Teams and Progress Associations, Small Business and Tourism operators, Wentworth Regional Tourism Inc, Employment and Training services providers, NSW Department of State and Regional Development	2009/2010
Encourage employment and retention of local young people and indigenous people in local businesses	Education, training and employment providers, NSW Department of State and Regional Development, Small business and tourism operators	2009/2010
Encourage development of business networks for mentoring and support of small business operators	Community Action Teams and Progress Associations, Small Business and Tourism operators, Wentworth Regional Tourism Inc, Employment and Training services providers, NSW Department of State and Regional Development	2009/2010
Develop regional events and festivals plan for Wentworth Shire	Community Action Teams and Progress Associations, Small Business and Tourism operators, Wentworth Regional Tourism Inc, NSW Department of State and Regional Development, Mildura Arts, West Darling Arts	2009/2010

Community Need and Strategy 5 – Develop Strategy for Conservation and Protection of the Environment

The need for civic pride and a clear focussed identity for each township were raised in each community consultation session, with discussion centred around

- placement and nature of town identification signage and tourist signage to and from major attractions and townships
- access to riverfront parks and appropriateness of current amenities (nature, placement, access and maintenance)
- road maintenance – rural road system
- home rubbish recycling and rubbish dumping prevention measures to protect environment

with relevance in all four townships and are issues for all target groups.

Council Actions– Sustainable Environment – The Place Where We Live - Conserving and Restoring the Environment	Linkages	Timeframe
Review access to and usage of riverfront parks including maintenance of community amenities during peak usage periods	Buronga and Gol Gol Progress Association	Ongoing
Review maintenance and safety program for rural roads	Pooncarie Progress and Development Association	Ongoing
Engage community in and advocate for home or depot rubbish recycling	Community Action Teams, Environmental groups	2009/2010
Provide leadership in the co-ordination of community litter task force and national environmental action days	Community Litter Task Force, Landcare, CMA, Service Clubs, Community Action Teams and other community based clubs/groups	Ongoing
Investigate ways to minimise illegal dumping	Community Action Teams, Ellerslie Progress Association	Ongoing

Community Need and Strategy 6 – Develop Transport Strategy

Public, private and community transport options were discussed at each community consultation with particular emphasis on

- availability of after hours transport
- high cost of available transport options
- need to extend school bus services

and were identified as needs in the three townships of Wentworth, Pooncarie and Dareton and as priority issues for the target groups of young people, older people, indigenous people and women.

Council Actions– Sustainable Communities (Social) – Our People – Planning for Community Services	Linkages	Timeframe
Advocate for bus schedules and routes which meet the needs of specific communities or target groups.	NSW Department of State and Regional Development , Community Action Teams, Community Working Party (Indigenous), HACC, Mallee Family Care, Private bus companies	Ongoing
Advocate for the extension of the school bus route Dareton-Pooncarie into Pooncarie township	Pooncarie Progress and Development Association, Dareton Community Action Team, NSW Department of Education and contractors	Ongoing
Support the investigation of alternative transport sharing arrangements including private carpooling.	Community Action Teams, other health and social support community organisations	Ongoing
Advocate for the continuation and expansion of Aboriginal Night Patrol	Community Action Teams, Community Working Party (Indigenous), Mallee Family Care	Ongoing

Needs and Strategies Specific to each Community

Needs Specific to Community – Wentworth

- need to address disability access
- new subdivision for housing
- access to medical service
- plan for use of empty shop fronts and former school site

Council Actions	Linkages	Timeframe
Facilitate planning applications for disabled access to public, commercial and historic buildings	Building owners and occupiers, health and medical service providers	2010/2011
Facilitate provision of land for new housing development	Landowners and developers	Ongoing
Support the undertaking of health/medical services mapping to determine service gaps	Health and ageing service providers	2010/2011
Support the use of vacant community premises and /or shop fronts	Community Action Team, other community organisations, shop owners	2009/2010

Needs Specific to Community – Buronga and Gol Gol

- need for local aged care facilities
- improve public access to the riverfront recreational areas
- development of community shopping precinct and enhanced use of existing facilities
- need for home delivery of postage
- develop footpaths and share-ways to community facilities

Council Actions	Linkages	Timeframe
Ensure adequate provision of aged care services is included in planning process	Aged Care Service Providers, private developers, Community Action Team	Ongoing
Ensure adequate provision of riverfront access and facilities as a part of planning process	Community Action Team, user groups	Ongoing
Ensure adequate footpaths and share-ways are provided for foot and bike access to village shopping and other community facilities	Community Action Team, Midway Centre User groups	Ongoing
Develop facility use plan for Midway Centre to ensure it is appropriate for community needs	Community Action Team, Midway Centre User groups	2009/2010
Consult with Australia Post on provision of home delivery service	Australia Post, Community Action Team	Ongoing

Needs Specific to Community – Dareton

- develop township identity and positive communication strategy
- housing and infrastructure maintenance
- enhanced education and employment opportunities for indigenous people, including small business development
- enhanced support services – health, legal, housing and social work support for indigenous women, children and young people (including those who are victims of domestic violence)
- facilitation of community leadership and participation

Council Actions	Linkages	Timeframe
Facilitate development of township identity and develop promotional and communication strategy to build community strength and leadership skills	Dareton Community Action team, Community Working Party, Interagency groups and community service providers and government departments including Department of State and Regional Development and Indigenous Co-ordination Centre	2009/2010
Facilitate opportunities for community groups and service providers - indigenous and non-indigenous to work together to formulate plans for community events and celebrations	Dareton Community Action team, Community Working Party, Interagency groups and community service providers and government departments including Department of State and Regional Development and Indigenous Co-ordination Centre	2009/2010
Encourage Indigenous land/building corporations and community organisations to work together to meet the basic needs of appropriate housing and infrastructure to residents of Namatjira and other Aboriginal housing clusters	Itha-Mari Building Corporations and Murdi Paaki, Community Working Party (Indigenous), Indigenous Co-ordination Centre	Ongoing
Encourage the formation of an interagency group to provide better focus on education, training, employment and small business development outcomes for indigenous people	Government education providers and JobNetwork Services Contractors, Community Working Party (Indigenous)	2009/2010
Encourage existing provider networks to ensure health (including drug and mental health), legal and social support services for indigenous people are delivered in a culturally appropriate manner from trusted community locations	Community health and government service providers, Indigenous Co-ordination Centre	Ongoing

Needs Specific to Community – Pooncarie and Ellerslie

- extend bus service into township for high school students
- consolidation of community groups for management of town assets
- improvement to road maintenance and safety

Council Actions	Linkages	Timeframe
Consult with NSW Education Department to extend school bus route Dareton to Pooncarie into Pooncarie township	Pooncarie Progress and Development Association, NSW Department of Education and contractors	Ongoing
Provide support for community groups to consolidate management	Pooncarie Progress and Development Association,	2009/2010
Develop road maintenance program in consultation with community	Pooncarie Progress and Development Association,	2009/2010
Support funding applications for upgrade to Ellerslie Community Hall facility including kitchen and access to drinking water	Ellerslie Progress Association	2009/2010

Identified Needs – By Target Group

Identified Need	Children	Young People	Aboriginal and Torres Strait Islanders	Older People	Women	People from CALD Backgrounds	People With Disabilities
Access to general community and service information		Yes	Yes	Yes	Yes	Yes	Yes
Participation and inclusion in community planning and decision making		Yes	Yes	Yes	Yes	Yes	Yes
Leadership Development		Yes	Yes		Yes		
Access to enhanced recreation. sporting and development programs	Yes	Yes	Yes	Yes	Yes		
Access to appropriate housing and accommodation and associated infrastructure	Yes	Yes	Yes	Yes	Yes		
Access to health and related information and support services (including sexual, maternal, early childhood, dental, mental health and drug rehabilitation)		Yes	Yes	Yes	Yes		Yes
Personal, home and community security and safety strengthening initiatives	Yes	Yes	Yes	Yes	Yes		
Child Protection and appropriate support/education	Yes	Yes	Yes		Yes		
Family intervention and support services including childcare and respite care	Yes	Yes	Yes		Yes		
Access to appropriate legal advisory and support services		Yes	Yes		Yes		
Access to pre-school education, after school care, educational support outside school and literacy development support services	Yes	Yes	Yes		Yes		
Access to preparatory and industry specific training and employment support; and small business creation services		Yes	Yes		Yes		
Access to Public and/or alternative transport		Yes	Yes	Yes	Yes		
Diversion from Crime and alternative Justice systems		Yes	Yes				
Promotion of positive community attitudes to indigenous cultural heritage, CALD and people with disabilities			Yes			Yes	Yes

Needs Specific to Target Group – Children

- child protection and appropriate support/education
- family intervention and support services including childcare and respite care
- access to appropriate health services for early childhood development
- access to pre-school education, after school care, educational support outside school and literacy development support services
- personal, home and community security and safety strengthening initiatives
- access to appropriate housing and accommodation and associated infrastructure
- access to enhanced recreation, sporting and development programs

Council Actions	Responsibility	Timeframe
Support government and non-government agencies to develop strategies and service provision models which will ensure children are safe from abuse, and their carers are provided with appropriate levels of education and support to provide continued protection for those children in their care	Community Working Party (Indigenous), Community Action Teams, NSW Department of Justice, NSW Police, Indigenous Co-ordination Centre, specialist community service providers	Ongoing
Support family intervention and support services (including childcare and respite care) to ensure they are delivered within appropriate timeframes and locations	Community Working Party (Indigenous), Community Action Teams, NSW Department of Justice, Indigenous Co-ordination Centre, specialist community service providers	Ongoing
Encourage appropriate family health services, including general, maternal, dental and early childhood development and information about and support to access these services is available within communities	Greater Western Health Services, Coomealla Aboriginal Health Centre, other community services providers	Ongoing
Support existing government and non-government education providers to enhance the delivery of their current services (including literacy development) and develop funding and operational models for new services associated with educational support outside school.	Community Working Party (Indigenous), Community Action Teams, NSW Department of Justice, Indigenous Co-ordination Centre, specialist community service providers	Ongoing
Advocate for the implementation of 'safe at home and safe in the community' style programs	Community Working Party (Indigenous), Community Action Teams, NSW Department of Justice, Indigenous Co-ordination Centre, specialist community service providers	Ongoing
Encourage Indigenous land/building corporations and community organisations to work together to meet the basic needs of appropriate housing and community infrastructure ensuring it is of appropriate construction and is well maintained, to support healthy and safe lifestyles for children and their families	Community Working Party (Indigenous), Dareton Community Action Team, Indigenous Co-ordination Centre, , Itha-Mari Building Corporations and Murdi Paaki,	Ongoing
Review current co-ordination of sporting and recreational activities provided for young people in each township (in consultation with families and children) as a part of the Sport and Recreation Master Plan	Community Working Party (Indigenous), Community Action Teams, NSW Department of Justice, Indigenous Co-ordination Centre, specialist community service providers, community sporting clubs, NSW Department of Sport and Recreation, Mallee Sport Assembly (Mildura)	2010/2011
Support community provider funding submissions for the provision of supervised activities for children (including school holiday and after hours programs)	Community Working Party (Indigenous), Community Action Teams, NSW Department of Justice, Indigenous Co-ordination Centre, specialist community service providers, community sporting clubs, NSW Department of Sport and Recreation, Mallee Sport Assembly (Mildura)	Ongoing

Needs Specific to Target Group - Young People

- access to general community and service information
- participation and inclusion in community planning and decision making
- leadership development
- access to enhanced recreation, sporting and development programs
- access to appropriate housing and accommodation and associated infrastructure
- access to health and related information and support services (including sexual, maternal, early childhood, dental, mental health and drug rehabilitation)
- personal, home and community security and safety strengthening initiatives
- child protection and appropriate support/education
- family intervention and support services including childcare and respite care
- access to appropriate legal advisory and support services
- access to after school care, educational support outside school and literacy development support services
- access to preparatory and industry specific training and employment support; and small business creation services
- access to public and/or alternative transport
- diversion from crime and access to alternative justice systems

Council Actions	Linkages	Timeframe
Develop a specific communication strategy for consulting with and disseminating information to young people (as a part of the communication strategy) and provide additional leadership opportunities for them to be included in community planning and decision making	Community Working Party (Indigenous), Community Action Teams, Indigenous Co-ordination Centre, specialist community service providers	2009/2010
Support family intervention and support services (including childcare and respite care) to ensure they are delivered within appropriate timeframes and locations	Community Working Party (Indigenous), Community Action Teams, Indigenous Co-ordination Centre, specialist community service providers of health and family intervention services	Ongoing
Support government and non-government agencies to develop strategy and service provision which will ensure young people are safe from abuse, and their carers/guardians are provided with appropriate levels of education and support to provide continued protection for those young people in their care	Community Working Party (Indigenous), Community Action Teams, NSW Department of Justice, NSW Police, Indigenous Co-ordination Centre, specialist community service providers	Ongoing
Support existing government and non-government education providers to enhance the delivery of their current services (including literacy development) and develop funding and operational models for new services associated with educational support outside school	Community Working Party (Indigenous), Community Action Teams, NSW Department of Justice, Indigenous Co-ordination Centre, specialist community service providers, primary, secondary and tertiary education providers,	Ongoing
Encourage existing provider networks to ensure health (including sexual, maternal, early childhood, dental, mental health and drug rehabilitation), legal and social support services for young people are delivered and promoted in an appropriate manner from trusted community locations	Greater Western Health Services, Coomealla Aboriginal Health Centre, Community Working Party (Indigenous), Community Action Teams, NSW Department of Justice, Indigenous Co-ordination Centre, specialist community service providers	Ongoing
Support community provider funding submissions for the provision of supervised age appropriate activities for young people which are available after hours (including school holiday and after hours programs)	Coomealla Aboriginal Health Centre, Community Working Party (Indigenous), Community Action Teams, Indigenous Co-ordination Centre, specialist community service providers	2010/2011

Needs Specific to Target Group - Young People continued		
Council Actions	Linkages	Timeframe
Review current co-ordination of sporting and recreational activities provided for young people in each township (in consultation with young people) as a part of the Sport and Recreation Master Plan	Community Working Party (Indigenous), Community Action Teams, NSW Department of Justice, Indigenous Co-ordination Centre, community sporting clubs, NSW Department of Sport and Recreation, Mallee Sport Assembly (Mildura)	2010/2011
Support the young people to participate in sporting activities through the provision of accredited training for volunteer coaches, trainers and umpires across the range of sporting activities	Community Working Party (Indigenous), Community Action Teams, NSW Department of Justice, Indigenous Co-ordination Centre, specialist community service providers, community sporting clubs, NSW Department of Sport and Recreation, Mallee Sport Assembly (Mildura)	2010/2011
Encourage the investigation of alternative emergency and medium to long-term accommodation options for young people who are unable to return home	Community Working Party (Indigenous), Community Action Teams, NSW Department of Justice, Indigenous Co-ordination Centre, specialist community service providers,	Ongoing
Facilitate co-ordination of an interagency group to provide better focus on education, training, employment and small business development outcomes for young people	Community Working Party (Indigenous), NSW Department of Justice, Indigenous Co-ordination Centre, specialist community training and employment providers, Riverina TAFE, Coomealla High School	2009/2010
Encourage employment and retention of local young people in local businesses	Community Working Party (Indigenous), NSW Department of Justice, Indigenous Co-ordination Centre, specialist community service providers, community training and employment providers, Riverina TAFE. local businesses	2010/2011
Consult with private bus companies to determine viability of scheduling, route changes or special service to coincide with youth activities and events occurring outside the district	Community Action Teams, Community Working Party (Indigenous), community service providers	Ongoing
Advocate for and support community in consultations with NSW Education Department to extend school bus route Dareton-Pooncarie into Pooncarie township	Pooncarie Progress and Development Association, Dareton Community Action Team, NSW Department of Education and contractors	2009/2010
Encourage the co-ordination of carpooling and/or funding for alternative transport sharing arrangements	Community Action Teams, other health and social support community organisations	Ongoing
Support the provision of after hours transport service (Night Patrol) which enables young people to return home or have a safe place overnight	Community Action Teams, Community Working Party (Indigenous), Mallee Family Care	Ongoing
Encourage the provision of diversionary programs/activities and alternative justice programs for young people engaging in criminal activity or at risk of becoming involved	Community Working Party (Indigenous), Community Action Teams, NSW Department of Justice, Indigenous Co-ordination Centre, specialist community service providers	2009/2010
Support the implementation of safe at home and safe in the community programs to increase the security and well-being of young people	Community Working Party (Indigenous), Community Action Teams, NSW Department of Justice, NSW Police, Indigenous Co-ordination Centre, specialist community service providers, Neighbourhood Watch	2009/2010
Encourage the development of community education, social support programs and facilities for victims and potential victims of crime and the provision of education and support service for perpetrators of crime and those at risk	Community Working Party (Indigenous), NSW Police, Community Action Teams, NSW Department of Justice, Neighbourhood Watch, Victims of Crime groups, Indigenous Co-ordination Centre, specialist community service providers	Ongoing

Needs Specific to Target Group - Indigenous People

- access to general community and service information
- participation and inclusion in community planning and decision making
- leadership development
- access to enhanced recreation, sporting and development programs
- access to appropriate housing and accommodation and associated infrastructure
- access to health and related information and support services (including sexual, maternal, early childhood, dental, mental health and drug rehabilitation)
- personal, home and community security and safety strengthening initiatives
- child protection and appropriate support/education
- family intervention and support services including childcare and respite care
- access to appropriate legal advisory and support services
- access to after school care, educational support outside school and literacy development support services
- access to preparatory and industry specific training and employment support; and small business creation services
- access to public and/or alternative transport
- diversion from crime and access to alternative justice systems
- promotion of positive community attitudes to indigenous cultural heritage

Council Actions	Linkages	Timeframe
Develop a specific communication strategy for consulting with and disseminating information to indigenous people (as part of the Communication strategy) and provide additional leadership opportunities for them to be included in community planning and decision making	Community Working Party (Indigenous), Community Action Teams, Indigenous Co-ordination Centre, specialist community service providers	2009/2010
Support the provision of additional public computer access points (and associated training/support) for community use	Community Working Party (Indigenous), Community Action Teams, Indigenous Co-ordination Centre, specialist community service providers	2009/2010
Facilitate development of township identity for Dareton and develop promotional and communication strategies to build community pride, strength and leadership skills	Community Working Party (Indigenous), Community Action Teams, NSW Department of State and Regional Development, Indigenous Co-ordination Centre	2009/2010
Facilitate opportunities for community groups and service providers - indigenous and non-indigenous people to work together to formulate inclusive plans for community development and community events/celebrations	Community Working Party (Indigenous), Community Action Teams, Indigenous Co-ordination Centre	2009/2010
Encourage Indigenous land/building corporations and community organisations to work together to meet the basic needs of appropriate housing and community infrastructure ensuring it is of appropriate construction and is well maintained, to support healthy and safe lifestyles.	Itha-Mari Building Corporations and Murdi Paaki, Community Working Party (Indigenous), Indigenous Co-ordination Centre	Ongoing
Facilitate co-ordination of an interagency group to provide better focus on education, training, employment and small business development outcomes for indigenous people	Government education providers and JobNetwork Services Contractors, Community Working Party (Indigenous)	2009/2010
Encourage employment and retention of local indigenous people in local businesses	Government education providers and JobNetwork Services Contractors, Community Working Party (Indigenous)	2009/2010

Needs Specific to Target Group - Indigenous People continued Council Actions	Linkages	Timeframe
Support the development of Indigenous cultural programs which may lead to the development of small business enterprise	Government education providers and JobNetwork Services Contractors, Community Working Party (Indigenous)	2011/2012
Review current co-ordination of sporting, recreational and cultural activities with indigenous people and develop a prioritised needs assessment (as a part of the Sport and Recreation Master Plan)	Community Working Party (Indigenous), Community Action Teams, Indigenous Co-ordination Centre, specialist community service providers, community sporting clubs, NSW Department of Sport and Recreation, Mallee Sport Assembly (Mildura)	2010/2011
Develop existing provider networks to ensure health (including drug and mental health), legal and social support services for indigenous people are delivered in a culturally appropriate manner from trusted community locations	Community health and government service providers, Indigenous Co-ordination Centre	Ongoing
Support family intervention and support services (including childcare and respite care) to ensure they are delivered within appropriate timeframes and locations	Community Working Party (Indigenous), Community Action Teams, Indigenous Co-ordination Centre, specialist community service providers of health and family intervention services	Ongoing
Advocate for the implementation of safe at home and safe in the community programs to increase the security and well-being of indigenous people	Community Working Party (Indigenous), NSW Police, Community Action Teams, NSW Department of Justice, Neighbourhood Watch, Victims of Crime groups, Indigenous Co-ordination Centre, specialist community service providers	Ongoing
Support options to use existing community bus services more comprehensively and consult with private bus companies to determine viability of scheduling and route changes or special services to coincide with events and activities of interest to indigenous people	Community Action Teams, Community Working Party (Indigenous), community service providers, private bus companies	Ongoing
Support the investigation of co-ordinating carpooling and/or funding for alternative transport sharing arrangements	Community Action Teams, Community Working Party (Indigenous), community service providers	Ongoing
Advocate for the provision of diversionary programs/activities and alternative justice programs (Circle Sentencing) for indigenous people engaging in criminal activity or at risk of doing so	Community Working Party (Indigenous), NSW Police, Community Action Teams, NSW Department of Justice, Neighbourhood Watch, Victims of Crime groups, Indigenous Co-ordination Centre, specialist community service providers	2009/2010
Support the implementation of safe at home and safe in the community programs to increase the security and well-being of indigenous people	Community Working Party (Indigenous), NSW Police, Community Action Teams, NSW Department of Justice, Neighbourhood Watch, Victims of Crime groups, Indigenous Co-ordination Centre, specialist community service providers	2009/2010
Develop community education and social support programs and facilities for victims and potential victims of crime	Community Working Party (Indigenous), NSW Police, Community Action Teams, NSW Department of Justice, Neighbourhood Watch, Victims of Crime groups, Indigenous Co-ordination Centre, specialist community service providers	Ongoing
Develop a positive communication strategy which promotes and celebrates the indigenous heritage, the natural environment and unique indigenous culture of the Wentworth Shire.	Community Working Party (Indigenous), Community Action Teams, Indigenous Co-ordination Centre, Wentworth Regional Tourism	2009/2010

Needs Specific to Target Group - Older People

- access to general community and service information
- participation and inclusion in community planning and decision making
- access to age specific recreation, sporting and development programs
- access to appropriate housing and accommodation and associated infrastructure
- access to health and related information and support services
- personal, home and community security and safety strengthening initiatives
- access to public and/or alternative transport
- access to public, commercial and historic buildings

Council Actions	Responsibility	Timeframe
Develop a specific communication strategy for consulting with and disseminating information to older people (as a part of the Communication strategy) and provide additional opportunities for them to participate in community forums, planning consultations and decision making	Community Working Party (Indigenous), Community Action Teams, Indigenous Co-ordination Centre, specialist community providers of aged services	2009/2010
Review current co-ordination of sporting, recreational and cultural activities with older people and develop a prioritised needs assessment as a part of the Sport and Recreation Master Plan	Community Working Party (Indigenous), Community Action Teams, specialist community providers of aged services, Mallee Sports Assembly (Mildura) Senior Citizen And Sporting Clubs	2010/2011
Support existing provider networks and interagency group to ensure health, home care, respite accommodation and social support services for older people are delivered in a timely manner in appropriate locations	Greater Western Health Services, Coomealla Aboriginal Heath Centre, Community Working Party (Indigenous), Community Action Teams, specialist community providers of aged services	Ongoing
Ensure planning scope for the development and expansion of aged care residential services in communities in which older people currently reside (Buronga and Gol Gol and Wentworth)	Greater Western Health Services, Coomealla Aboriginal Heath Centre, Community Working Party (Indigenous), Community Action Teams, specialist community providers of aged services, private developers	Ongoing
Support and facilitate planning applications for access to public, commercial and historic buildings	Greater Western Health Services, Coomealla Aboriginal Heath Centre, Community Working Party (Indigenous), Community Action Teams, specialist community providers of aged services, building owners and occupiers	2009/2010
Liaise with existing community bus services and consult with private bus companies to determine viability of scheduling and route changes or special services to coincide with events and activities aimed at older people	Greater Western Health Services, Coomealla Aboriginal Heath Centre, Community Working Party (Indigenous), Community Action Teams, specialist community providers of aged services	Ongoing
Support the investigation of alternative transport sharing arrangements including private carpooling.	Greater Western Health Services, Coomealla Aboriginal Heath Centre, Community Working Party (Indigenous), Community Action Teams, specialist community providers of aged services	Ongoing
Support the implementation of safe at home and safe in the community programs to enhance feelings of security and well-being and develop community education, social support programs and facilities for older people who are victims and potential victims of crime	Community Working Party (Indigenous), NSW Police, Community Action Teams, NSW Department of Justice, Neighbourhood Watch, Victims of Crime groups, Indigenous Co-ordination Centre, community service providers	Ongoing

Needs Specific to Target Group - Women

- access to general community and service information
- participation and inclusion in community planning and decision making
- leadership development
- access to enhanced recreation, sporting and development programs
- access to appropriate housing and accommodation and associated infrastructure
- access to health and related information and support services (including sexual, maternal, early childhood, dental, mental health and drug rehabilitation)
- personal, home and community security and safety strengthening initiatives (including protection from domestic violence)
- child protection and appropriate support/education
- family intervention and support services including childcare and respite care
- access to appropriate legal advisory and support services
- access to after school care, educational support outside school and literacy development support services
- access to preparatory and industry specific training and employment support; and small business creation services
- access to public and/or alternative transport

Council Actions	Linkages	Timeframe
Develop a specific communication strategy for consulting with and disseminating information to women (as a part of the Communication strategy) and provide additional opportunities for them to participate in community forums, planning consultations and decision making	Community Working Party (Indigenous), Community Action Teams, specialist community service providers	2009/2010
Review current co-ordination of sporting, recreational and cultural activities to ensure the needs of women are included in plans for the development of these activities as a part of the Sport and Recreation Master Plan	Community Working Party (Indigenous), Community Action Teams, specialist community service providers, Mallee Sports Assembly (Mildura), Sporting Clubs	2010/2011
Encourage providers to make a full range of health services available in each community, including general, maternal, dental, early childhood development, mental health and substance abuse.	Greater Western Health Services, Community Working Party (Indigenous), Community Action Teams, specialist community service providers	Ongoing
Encourage the development of existing provider networks to ensure health, legal and social support services for women are delivered and promoted in an appropriate manner from trusted community locations	Greater Western Health Services, Coomealla Aboriginal Health Centre, Community Working Party (Indigenous), Community Action Teams, specialist community service providers	Ongoing
Support the provision of safe, emergency accommodation for women who may be victims of crime	Greater Western Health Services, Coomealla Aboriginal Health Centre, Community Working Party (Indigenous), Community Action Teams, specialist community providers services to women and families	Ongoing
Ensure housing and community infrastructure is of appropriate construction and is well maintained to support healthy and safe lifestyles for women and their families	Itha-Mari Building Corporations and Murdi Paaki, Community Working Party (Indigenous), Indigenous Co-ordination Centre, community service providers	Ongoing

Needs Specific to Target Group – Women continued

Council Actions	Linkages	Timeframe
Facilitate co-ordination of an interagency group to provide better focus on education, training, employment and small business development outcomes for women	Government education providers and JobNetwork Services Contractors, Community Working Party (Indigenous)	2010/2011
Liaise with existing community bus services and consult with private bus companies to determine viability of scheduling and route changes or special services to coincide with events and activities aimed at women and young children	Greater Western Health Services, Community Working Party (Indigenous), Community Action Teams, community service providers	Ongoing
Support the investigation of alternative transport sharing arrangements including private carpooling.	Greater Western Health Services, Community Working Party (Indigenous), Community Action Teams, community service providers	Ongoing

Needs Specific to Target Group - People from Culturally and Linguistically Diverse (CALD) Backgrounds

- access to general community and service information
- participation and inclusion in community planning and decision making
- promotion of positive community attitudes to people from CALD backgrounds

Council Actions	Linkages	Timeframe
Ensure the communication needs of people from CALD backgrounds are considered when publishing Council documentation and development of specific actions for better inclusion in community planning and decision making (to be considered as a part of the Communication Strategy)	Ethnic Communities Council (Mildura), specialist community services providers	2009/2010
Promote positive community attitudes to the contribution that people from CALD backgrounds have made/are making in our communities and ensure CALD communities are included in community events and activities	Ethnic Communities Council (Mildura), specialist community services providers	Ongoing

Needs Specific to Target Group - People Living with a Disability

- disabled access to public, commercial and historic buildings
- access to general health and community service information
- participation and inclusion in community planning and decision making
- promotion of positive community attitudes to people living with a disability

Council Actions	Linkages	Timeframe
Support and facilitate planning applications for disabled access to public, commercial and historic buildings	Building owners and occupiers, Greater Western Health Services,	2009/2010
Support existing provider networks and interagency group to ensure health, home care, respite accommodation and social support services for people living with a disability are delivered in a timely manner in appropriate locations	Greater Western Health Services, Community Working Party, Community Action Teams, specialist community service providers	Ongoing
Ensure the communication needs of people living with a disability are considered when publishing Council documentation and development of specific actions for better inclusion in community planning and decision making (to be considered as a part of the Communication Strategy)	Greater Western Health Services, Community Working Party, Community Action Teams, specialist community service providers	2009/2010
Promote positive community attitudes to people living with a disability and ensure provision is made for this target group when organising community events and activities	Greater Western Health Services, Community Working Party, Community Action Teams, specialist community service providers	Ongoing

Appendix A – ABS Census Quickstats – Population by Collector Districts /Township Clusters

Township Clusters	ABSCollector District	Males	Females	Total	Indigenous	0-4	5-14	15-24	25-54	55-64	65+
WENTWORTH											
Wentworth East	1020701	350	316	666	82	33	73	87	237	105	131
Wentworth West	1020705	299	340	639	63	36	68	61	203	97	174
Anabranth South*	1020704	45	39	84							
Anabranth North*	1020703	32	19	51							
Pomona	1020702	207	139	346	3	13	65	34	154	47	35
Curlwaa	1020706	224	180	404	8	20	67	50	183	47	37
Darling View	1020712	92	72	164	10	11	21	13	67	29	26
TOTAL		1249	1105	2354	166	113	294	245	844	325	403
%		53.06	46.94		7.05	4.80	12.49	10.41	35.85	13.81	17.12
DARETON											
Namatjira**	1020713	45	67	112	112	14	30	19	36	7	3
Dareton	1020707	274	293	567	203	36	95	63	191	80	103
Coomealla West	1020708	118	112	230	9	30	27	28	94	33	17
Coomealla East	1020709	156	144	300	8	15	38	37	139	39	30
TOTAL		593	616	1209	332	95	190	147	460	159	153
%		49.05	50.95		27.46	7.86	15.72	12.16	38.05	13.15	12.66
BURONGA AND GOL GOL											
Boeill Creek	1020710	149	128	277	3	20	37	26	100	57	37
Buronga	1020711	417	390	807	62	42	129	109	334	96	98
Gol Gol Central	1020801	337	326	663	30	56	92	76	264	88	87
Gol Gol North	1020804	409	376	785	4	66	140	89	365	78	47
Trentham Cliffs (South)	1020805	180	171	351		27	76	27	145	28	46
TOTAL		1492	1391	2883	99	211	474	327	1208	347	315
%		51.75	48.25		3.43	7.32	16.44	11.34	41.90	12.04	10.93
POONCARIE											
Pooncarie	1020802	89	66	155	5	4	26	15	67	21	22
Ellerslie	1020803	107	80	187	5	10	28	13	84	33	22
TOTAL		196	146	342	10	14	54	28	151	54	44
%		57.31	42.69		2.92	4.09	15.79	8.19	44.15	15.79	12.87
TOTALS		3530	3258	6788	607	433	1012	747	2663	885	915
%		57.31	42.69		8.94	4.09	15.79	8.19	44.15	15.79	12.87

*Detailed breakdown of age range not available ** discrepancy 3 persons in ABS data Collector District 1020713 Namatjira Sourced from Australian Bureau of Statistics – 2006 Census Quickstats – Collector Districts (inconsistencies in ABS Data sets occur between Collector Districts and other ABS products)

Reference Documents

The following reference and source documents have been used to compile this plan:

Social and Community Planning and Reporting Guidelines, NSW Department of Local Government, December 2002

Social and Community Planning and Reporting Manual, NSW Department of Local Government, December 2002

Raising Expectations? A Review of NSW Local Government Social Plans, UTS Local Government Papers 1/07, June 2007

Creating Active Communities – Physically Active Guidelines for Local Councils, NSW Department of Local Government 2001(revised 2006)

Wentworth Shire Sense of Place Report Volume 1, December 2003 – Community Profile and Strategic Plans, Jill French, Wentworth Shire, NSW Department of State and Regional Development and NSW Premier's Department

Wentworth Shire Sense of Place Report Volume 111, December 2003 – Community Action Plans, Jill French, Wentworth Shire, NSW Department of State and Regional Development and NSW Premier's Department

Shire of Wentworth – Social Plan 2004/2009, Wentworth Shire, 2004

Broken Hill City Council, Social Plan 2005/2010, Broken Hill City Council 2005

Central Darling Shire Council Social Plan 2006-2009, Central Darling Shire Council, 2006

Mildura Social Indicators Report 2008, Community Engagement Framework, Principal Consultant Professor Tony Vinson AM, Mildura Rural City Council and La Trobe University, 2008

Dareton Aboriginal Community Submission to NSW Legislative Council Standing Committee, Inquiry into Closing Gap - Overcoming Indigenous Disadvantage, January 2008

Community Action Plan, Shire of Wentworth Community Working Party, 2003

Chances for Children, Analysis of socio-economic indicators of North West Victoria and South West New South Wales and Recipient and community perceptions of the program, Daniel Edwards , Bob Birrell, Centre for Population and Urban Research , Monash University 2006 (funded by RE Ross Trust)

Tables and graphical information presented on pages

8 – Estimated Resident Population

9 – Components of Growth

10 and 11 – Labour Force, Unemployment and Major Industries of Employment

19- Indigenous Population Wentworth (A), 1996, 2001, 2006

within this document were sourced from Department of State and Regional Development and are reproduced with the Department's permission from original data supplied by the Australian Bureau of Statistics. Copyright on the original data is copyright Commonwealth of Australia, with calculations undertaken by NSW Department of Planning.